

CERTIFICATE OF LOCATION OF GOVERNMENT CORNER

Southwest Corner of Section 31, Township 114, Range 46, 5th. P.M.

STATE OF MINNESOTA, County of YELLOW MEDICINE

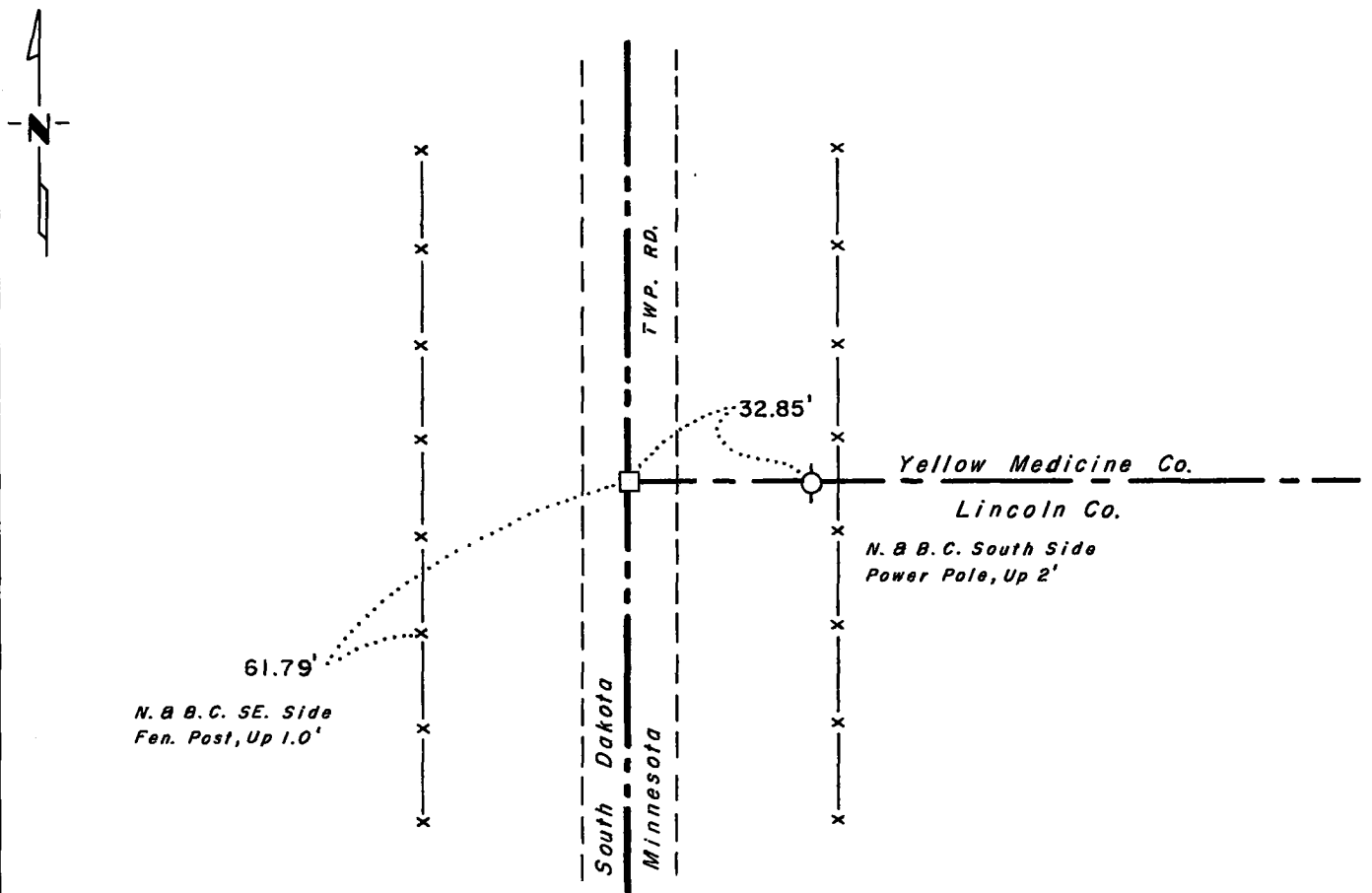
At the corner location shown on the sketch:

On 6-29-77 found a Broken 4" x 4" Iron Monument, Down 16" With Re. Rod Over
DATE

left monument as found, lowered monument, removed monument (explain)

On 6-29-77 placed a 3/4" x 12" Iron Rod Over, Down 4". Removed Re. Rod
DATE

SKETCH OF REFERENCE TIES



Statement of evidence relative to this corner location is on back of page.

RECORDED
GRANTED
INDEXED

I hereby certify that this document and the data contained herein was prepared by me or under my direct supervision.

Mary H. Stevan 3-6-78
SIGNATURE DATE

Registration No. 12684

Land Surveyor, Professional Engineer

County Surveyor, County Engineer

OFFICE OF THE COUNTY RECORDER
County of Yellow Medicine

I hereby certify that this document was filed in the Co. Recorder office at 9:30 A.M. on the 9th day of June A.D., 19 81

County Recorder Norman J. Opdahl

By Kay Dendahl, Deputy

DOCUMENT NO. 178291

Statement of Evidence: Southwest Corner of Section 31, Township 114,
Range 46. County of Yellow Medicine

This corner was originally established by the U.S. General Land Office survey in 1871. The government notes show corner marked with a wood post set in mound of earth with pits and trench dug around the mound.

In 1964 and 1977, the DNR Bureau of Engineering contacted the Lincoln and Yellow Medicine County Offices of the Recorder and Highway Engineer for corner information. The following information was obtained from the Yellow Medicine County Recorder:

John Norgaard, county surveyor, in 1897, found a mound, pits and the remains of old stake, at this corner and set an iron monument marked "SW S31 T114 R46". This is recorded on page 155 in the large surveyors record book.

In 1964 the DNR found an iron monument with a 3" x 4" broken top, 21" below the road surface. A 1/2" iron rebar was set over, and ties were taken.

On June 29, 1977, we found the rebar in place and found a broken topped 4" x 4" iron monument, 16" below road surface. The monument was stamped with the lettering as stated above. The rebar was removed and a 3/4" x 12" iron rod was set over the monument.

Picture evidence of the corner is on file with the DNR Bureau of Engineering.