

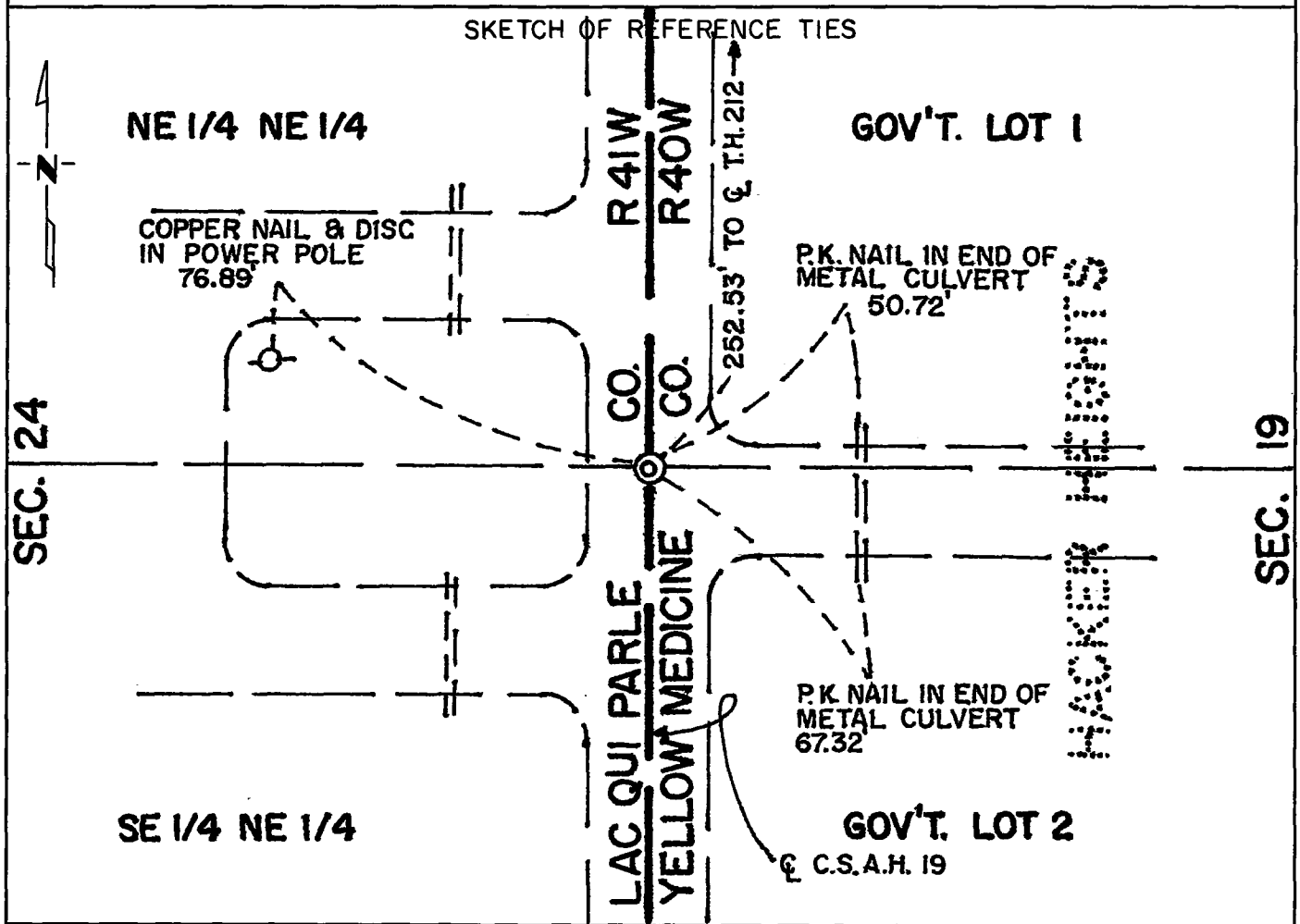
CERTIFICATE OF LOCATION OF GOVERNMENT CORNER

N.W. Corner of
 Government Lot 2 _____ of Section 19, Township 117 N, Range 40W, 5th P.M.

STATE OF MINNESOTA, County of Yellow Medicine

At the corner location shown on the sketch:

- On Jan 12, 1982 found a nothing marking the corner
DATE
- left monument as found, lowered monument, removed monument (explain)
- On Jan 26, 1982 placed a 3/4" diameter by 24" long iron pin at the
DATE surface of the bituminous road



Statement of evidence relative to this corner location is on back of page.

I hereby certify that this document and the data contained herein was prepared by me or under my direct supervision.

Robert C Jones 1/29/82
SIGNATURE DATE

Registration No. 11864
 Land Surveyor, Professional Engineer
 County Surveyor, County Engineer

OFFICE OF THE COUNTY RECORDER
 County of Yellow Medicine

I hereby certify that this document was filed in the Co. Recorders office at 8:55 A.M. on the 2 day of February A.D., 19 82

County Recorder Norman J. Opdahl
 By Kay Nordahl, Deputy
 DOCUMENT NO. 179434

Statement of Evidence: Northwest Corner of Government Lot 2 of
Section 19, T 117 N, R 40 W

- 1858- The original Public Land Survey for the township line was completed by J.W. Meyers. Nothing was set to mark this corner.
- 1895- L.R. Moyer, J. Peterman, and G. Michel, County Surveyors of Chippewa, Yellow Medicine and Lac Qui Parle Counties, resurveyed the township line. They found and monumented the N.W. corner and west quarter corner of Sec. 19 during this survey. Nothing was set to mark this corner.
- 1947- Minnesota Highway Dept. Amended Width Order No. 17887 calls for the south line of Gov't. Lot 1 of Sec. 19 (the north line of Gov't, Lot 2). The right of way map depicting the width order shows this corner to be 254.7' south of TH 212 centerline station 196+20. If the right of way was monumented at that time, the monuments would have been set 75' east and west of the centerline of the north/south county road and about 254.7' south of the centerline of TH 212.
- 1973- Ted Chamberlain, R.L.S. in Montevideo, filed the plat of Hacker Heights which covers portions of Gov't. Lots 1 and 2 in Sec. 19. He apparently found some type of R/W monumentation in place at that time which position this corner 252.53' south of the centerline of TH 212. This position is 2.17' north of the location shown on the R/W map.
- 1976-1978- D.K. Kohanek, R.L.S. with Mn/DOT, re-established the N.W. corner of Sec. 19 and found the W 1/4 corner of Sec. 19. He did not set anything to mark this corner.
- 1982- A Mn/DOT survey crew set a 3/4" diameter by 24" long iron pin at the surface of the county road to mark this corner. It is 252.53' south of TH 212 centerline station 196+19.87 which conforms with the plat of Hacker Heights and 2.17' north of the position shown on the 1947 R/W map. It is 5.79' south of the split between the N.W. corner and the W 1/4 corner of Sec. 19.

This is accepted as the position of the northwest corner of Government Lot 2 because it nearly fits a position that has been accepted for 35 years and it fits the position shown on the plat of Hacker Heights.

For further survey information, contact the Mn/DOT Surveys Section in Willmar, Mn 56201.