

CERTIFICATE OF LOCATION OF GOVERNMENT CORNER

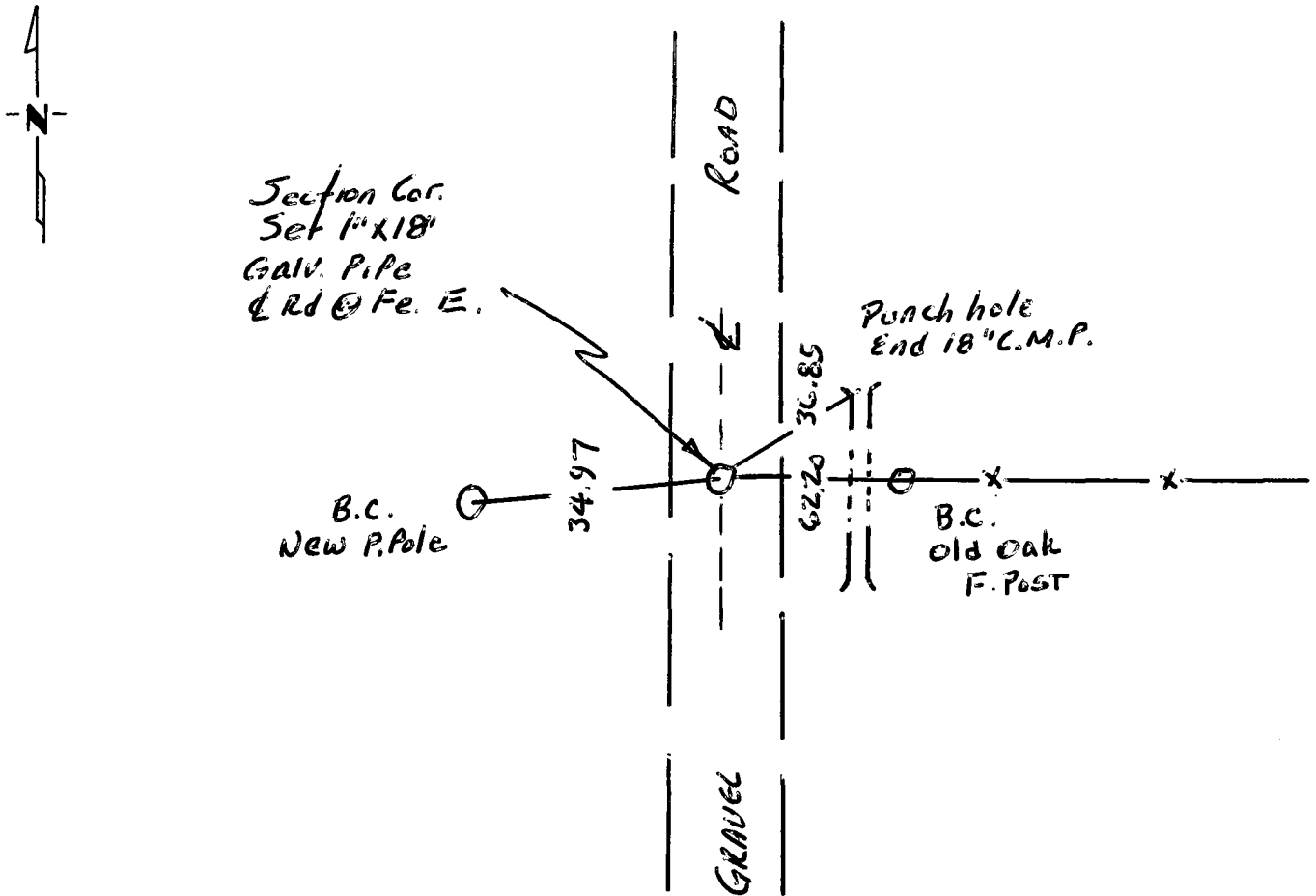
NE Corner of Section 17, Township 115, Range 45, 5 P.M.

STATE OF MINNESOTA, County of YELLOW MEDICINE

At the corner location shown on the sketch:

- On _____ found a _____
DATE
- left monument as found, lowered monument, removed monument (explain)
- On 4/1/1982 placed a IRON PIPE
DATE

SKETCH OF REFERENCE TIES



Statement of evidence relative to this corner location is on back of page.

I hereby certify that this document and the data contained herein was prepared by me or under my direct supervision.

Dale Bohley 4/2/1982
SIGNATURE DATE

Registration No. 12002

- Land Surveyor, Professional Engineer
- County Surveyor, County Engineer

OFFICE OF THE COUNTY RECORDER
County of Yellow Medicine

I hereby certify that this document was filed in the Co. Recorder office at 8:45 A.M. on the 5th day of April A.D., 19 82

County Recorder Norman Opatosh

By _____, Deputy
DOCUMENT NO. 179778 Grantor ~ Grantee ~

Statement of Evidence:

A post in mounds was set at the corner in the orig. G.L.O. in 1878

Book B P-23 & P-123 in the Co. Records office shows Found stake set mon. level w/grnd.

County Hwy Book shows ties to this corner. The tie 62.2 feet to 3rd F.P. E. was used to reset this corner because it matched $\frac{1}{2}$ road and is an old fence.

1982, I set pipe on old fence E. and this matches within 2 feet the distances in Book B using 1m's and $\frac{1}{2}$ Roads. Pro-rated.