

# CERTIFICATE OF LOCATION OF GOVERNMENT CORNER

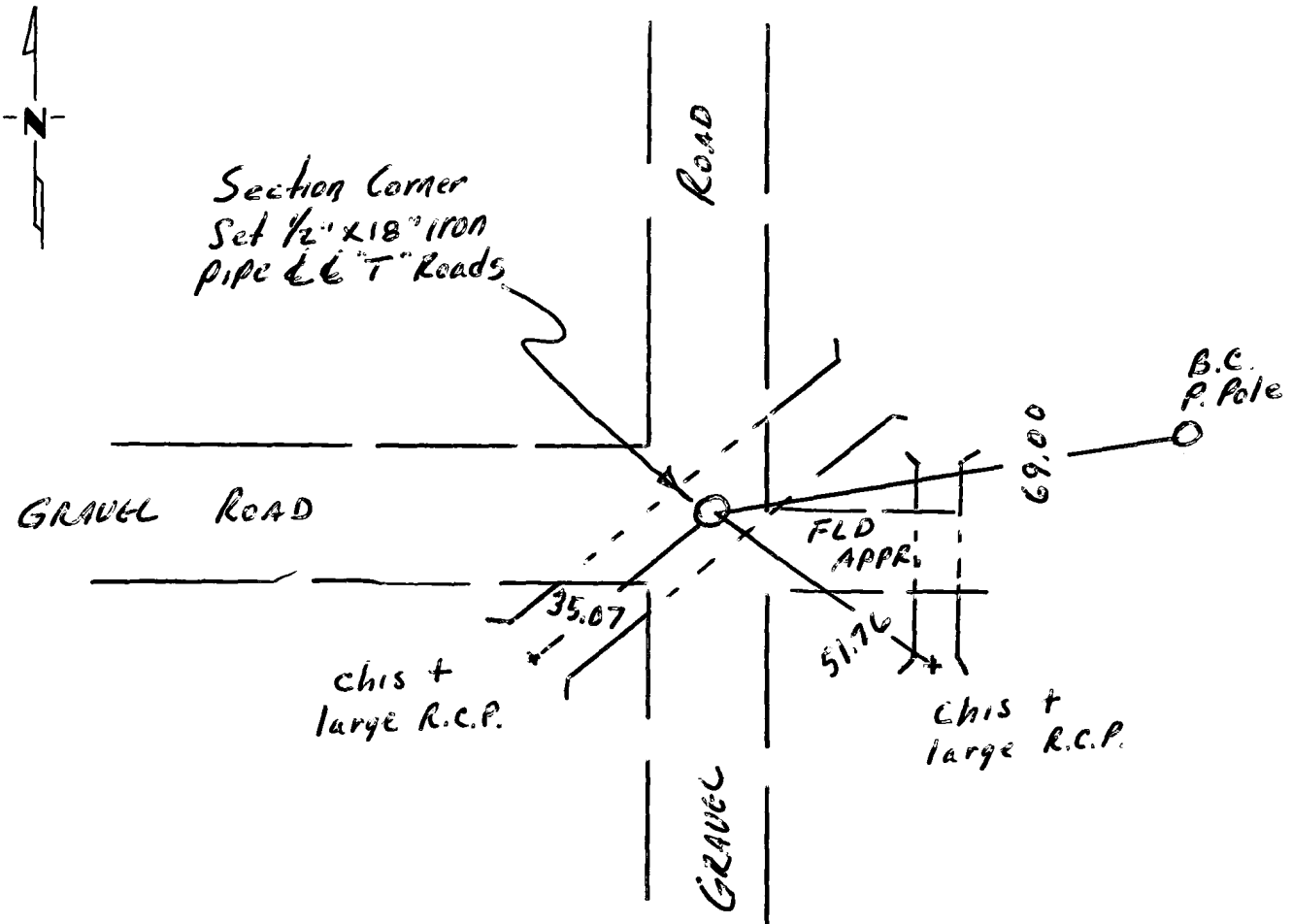
N.W. Corner of Section 17, Township 115, Range 45, B P.M.

STATE OF MINNESOTA, County of YELLOW MEDICINE

At the corner location shown on the sketch:

- On \_\_\_\_\_ found a \_\_\_\_\_  
DATE
- left monument as found,  lowered monument,  removed monument (explain)
- On 4/1/1982 placed a IRON PIPE  
DATE

### SKETCH OF REFERENCE TIES



Statement of evidence relative to this corner location is on back of page.

I hereby certify that this document and the data contained herein was prepared by me or under my direct supervision.

Dale Bohler 4/2/1982  
SIGNATURE DATE

Registration No. 12002

- Land Surveyor,  Professional Engineer
- County Surveyor,  County Engineer

OFFICE OF THE COUNTY RECORDER  
County of Yellow Medicine

I hereby certify that this document was filed in the Co. Recorder office at 8:50 A.M. on the 5th day of April A.D., 19 82

County Recorder Norman Q. Goddard

By \_\_\_\_\_, Deputy  
DOCUMENT NO. 179779 Grantor Grantee

Statement of Evidence:

A post in mounds was set at this corner in the Orig. G.L.O. survey in 1878

Book B Pages 23 & 123 in the Co. Records Office states a monument set here 2" above ground.

Co. Hwy Dept shows ties to this corner but all have been destroyed.

1982 I set pipe @ corner @ E & E "T" Road which prorated distance from N.W. corner Sec. 8, (prorated as per E. line Sec's 8 & 17) fits good. (distance to SW cor Sec 17 does not fit) all as per Book B.

A number of culverts were placed here about 8 yrs ago. Co. Hwy worker was on hand 4/1/82 and stated he did not believe corner was set back in, which was a square stone, although he was not present all the time, but a call to his office could produce no ties etc. Also the corner 1 mile South was also constructed w/ culv's so corner is gone, I believe.