

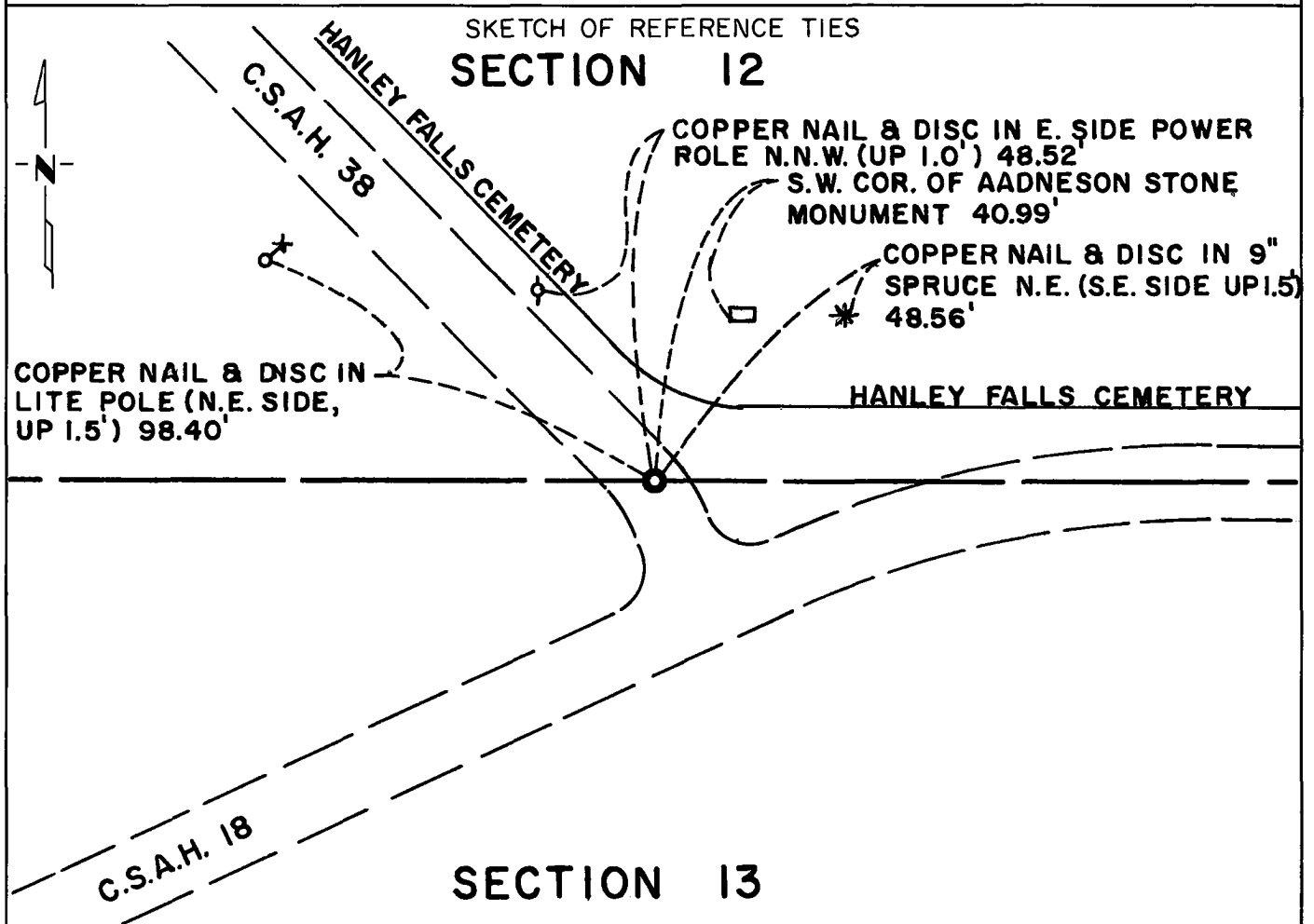
CERTIFICATE OF LOCATION OF GOVERNMENT CORNER

North Quarter Corner of Section 13, Township 114 N, Range 40 W, 5th P.M.

STATE OF MINNESOTA, County of Yellow Medicine

At the corner location shown on the sketch:

- On _____ found a _____
DATE
- left monument as found, lowered monument, removed monument (explain)
- On Mar 6, 1981 placed a cast iron monument about 1" below the
DATE surface of the road



Statement of evidence relative to this corner location is on back of page.

I hereby certify that this document and the data contained herein was prepared by me or under my direct supervision.

Robert Jones 12/16/82
SIGNATURE DATE

Registration No. 11864

- Land Surveyor, Professional Engineer
- County Surveyor, County Engineer

OFFICE OF THE COUNTY RECORDER

County of Yellow Medicine

I hereby certify that this document was filed in the Co. Recorders office at 9:15 A. M. on the 17 day of December A.D., 19 82

County Recorder Norman S. Gjedde

By _____, Deputy

DOCUMENT NO. 181054

Statement of Evidence: North Quarter Corner Section 13-114-40

For a complete history of this corner, see Document No. 162739 filed on Jan. 11, 1974 with the Yellow Medicine County Recorder.

1981 - A Mn/DOT survey crew set a cast iron monument to mark the corner according to State Plane Coordinate Surveys conducted in 1972 and 1973.
Reconstruction of T.H. 23 was completed in 1980 on new alignment.