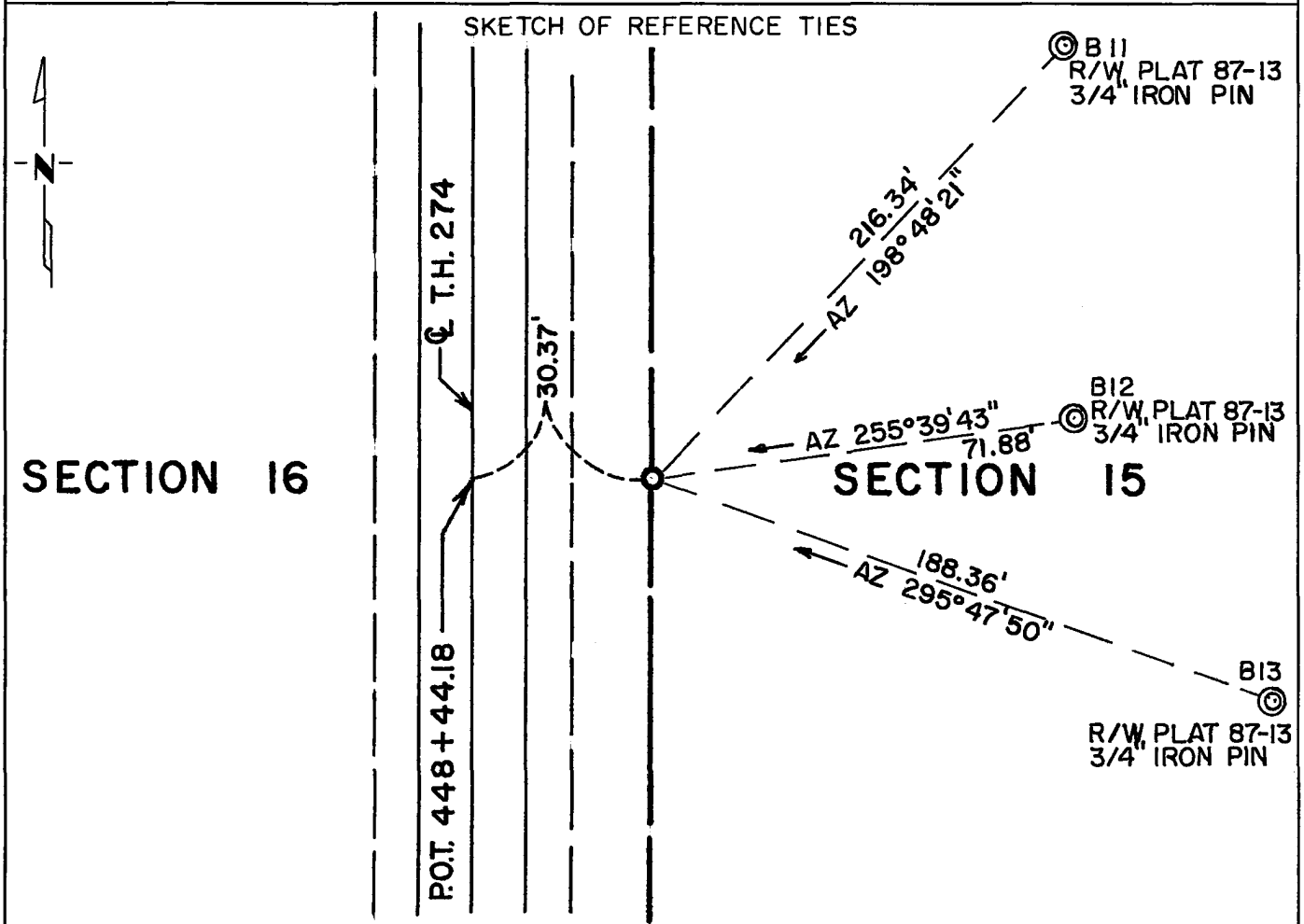


CERTIFICATE OF LOCATION OF GOVERNMENT CORNER

East Quarter Corner of Section 16, Township 115 N, Range 39 W, 5th P.M.
 STATE OF MINNESOTA, County of Yellow Medicine

At the corner location shown on the sketch:

- On _____ found a _____
DATE
- left monument as found, lowered monument, removed monument (explain)
- On Mar 6, 1981 placed a cast iron monument about 1" below the surface
DATE of the ground



Statement of evidence relative to this corner location is on back of page.

I hereby certify that this document and the data contained herein was prepared by me or under my direct supervision.

Robert C Jones 12/16/82
SIGNATURE DATE

Registration No. 11864
 Land Surveyor, Professional Engineer
 County Surveyor, County Engineer

OFFICE OF THE COUNTY RECORDER
 County of Yellow Medicine

I hereby certify that this document was filed in the Co. Recorders office at 9:25 A. .M. on the 17 day of December A.D., 19 82

County Recorder Norman J. Opdebe
 By _____, Deputy
 DOCUMENT NO. 181056

Statement of Evidence: East Quarter Corner Section 16-115-39

For a complete history of this corner, see Document No. 163591 filed with the Yellow Medicine County Recorder in 1974.

1981 - A Mn/DOT survey crew set a cast iron monument to mark the corner according to State Plane Coordinate surveys conducted in 1972 and 1973. Reconstruction of T.H. 274 in this area was completed in 1980 on new alignment.