

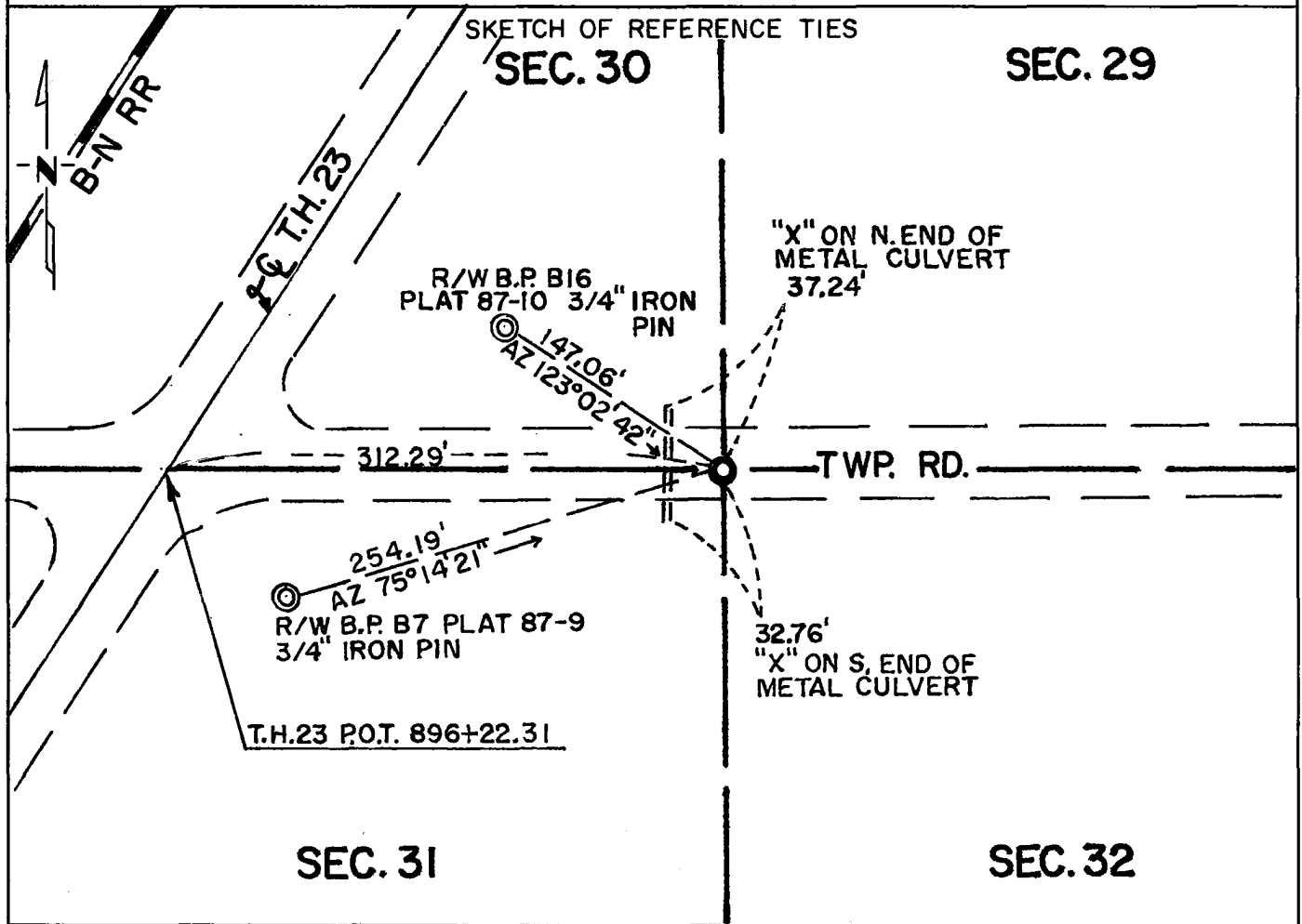
CERTIFICATE OF LOCATION OF GOVERNMENT CORNER

Northeast _____ Corner of Section 31, Township 115 N, Range 39 W, 5th P.M.
Yellow Medicine

STATE OF MINNESOTA, County of _____

At the corner location shown on the sketch:

- On Mar 6, 1981 found a 6" by 6" by 24" granite monument about 4" below
DATE the surface of the road
- left monument as found, lowered monument, removed monument (explain)
- On Mar 6, 1981 placed a cast iron monument about 6" below the surface of
DATE the road



Statement of evidence relative to this corner location is on back of page.

I hereby certify that this document and the data contained herein was prepared by me or under my direct supervision.

Robert Jones 12/16/82
SIGNATURE DATE

Registration No. 11864

- Land Surveyor, Professional Engineer
- County Surveyor, County Engineer

OFFICE OF THE COUNTY RECORDER
 County of Yellow Medicine

I hereby certify that this document was filed in the Co. Recorders office at 9:30 A.M. on the 17 day of December A.D., 19 82

County Recorder Anna J. Godek

By _____, Deputy

DOCUMENT NO. 181057

Statement of Evidence: Northeast Corner Section 31-115-39

For a complete history of this corner, see Document No. 163251 filed in April 1974 with the Yellow Medicine County Recorder.

1981- A Mn/DOT survey crew found a 6" by 6" by 24" long granite stone monument about 4" below the road surface. The stone monument was removed and a cast iron monument was set in its place about 6" below the road surface. Reconstruction of T.H. 23 was completed in 1980 on new alignment.