

CERTIFICATE OF LOCATION OF GOVERNMENT CORNER

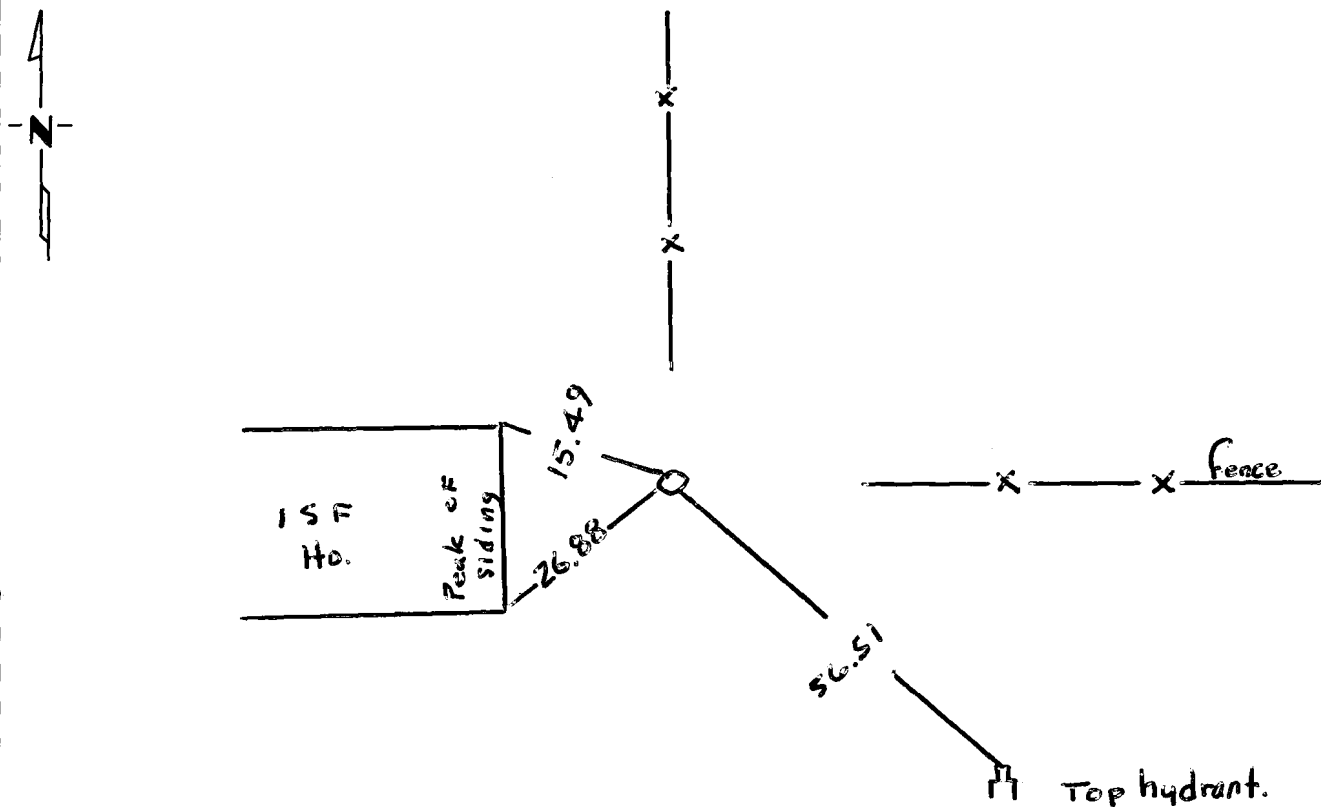
E 1/4 Corner of Section 32, Township 116, Range 39, 5 P.M.

STATE OF MINNESOTA, County of Yellow Medicine

At the corner location shown on the sketch:

- On 9/12/79 found a _____
DATE
- left monument as found, lowered monument, removed monument (explain)
- On 9/12/79 placed a 1" PIPE
DATE

SKETCH OF REFERENCE TIES



Statement of evidence relative to this corner location is on back of page.

I hereby certify that this document and the data contained herein was prepared by me or under my direct supervision.

Dale Bohler Oct 26 1983
SIGNATURE DATE

Registration No. 12002

- Land Surveyor, Professional Engineer
- County Surveyor, County Engineer

OFFICE OF THE COUNTY RECORDER

County of Yellow Medicine

I hereby certify that this document was filed in the Co. Recorder office at 9:05 A.M. on the 27 day of October, A.D., 1983

County Recorder Norman J. Opdahl

By Kay Nordahl, Deputy

DOCUMENT NO. 182914

RECORDED
GRANTOR
GRANTEE
INDEXED

Statement of Evidence:

1983 1 set in as indicated on Buhl-Eckert plat
as platted by A.E. Nelson R.L.S. in 1970

The dist to the S.E. cor Sec 32 is about 2' from MNDOT
computed distance. T.H. 212