

CERTIFICATE OF LOCATION OF GOVERNMENT CORNER

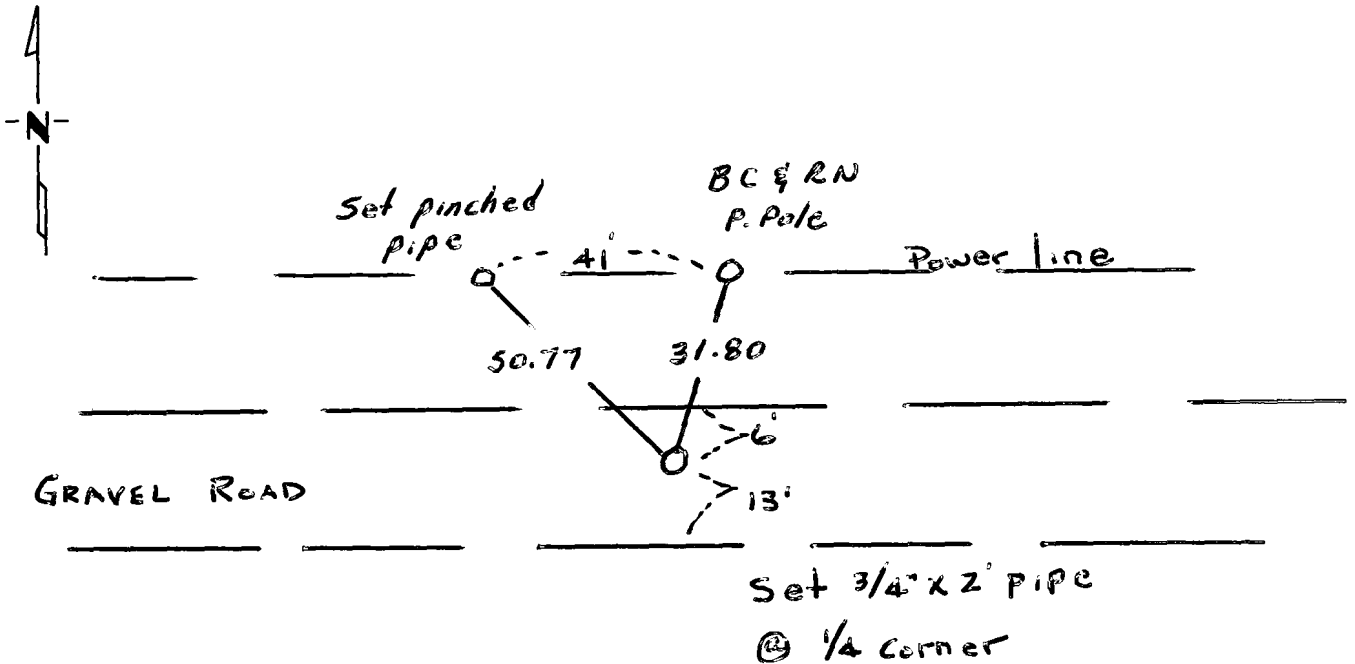
W 1/4 Corner of Section 32, Township 116, Range 39, 5 P.M.

STATE OF MINNESOTA, County of Yellow Medicine

At the corner location shown on the sketch:

- On 7/22/81 found a _____
DATE
- left monument as found, lowered monument, removed monument (explain)
- On 7/22/81 placed a 3/4" x 2" PIPE
DATE

SKETCH OF REFERENCE TIES



Statement of evidence relative to this corner location is on back of page.

I hereby certify that this document and the data contained herein was prepared by me or under my direct supervision.

Dale Bohler Oct 26 1983
SIGNATURE DATE

Registration No. 12002

- Land Surveyor, Professional Engineer
- County Surveyor, County Engineer

OFFICE OF THE COUNTY RECORDER

County of Yellow Medicine

I hereby certify that this document was filed in the Co. Recorder office at 9:10 A.M. on the 27 day of October A.D., 1983

County Recorder Norman J. Opdahl

By Kay Nordahl, Deputy

DOCUMENT NO. 182915

RECORDED
GRANTED
INDEXED

Statement of Evidence:

In 1892 the w¹/₄ cor was on split dist. from NW to SW cor's of Sec 32

In 1918 survey E¹/₄ cor Sec 31-116-39 was located in Rd due S. of Big tree (Tree now gone)

In 1912 the w¹/₄ cor Sec 32 was indicated at split dist from NW to SW cor's of Sec 32

In 1983 nothing was found @ w¹/₄ cor. I established the corner at equal dist N-S. from a C.I.M. @ SW cor Sec to the computed dist @ NW cor Sec (NW cor Sec 32 was pulled by farmer 50± yrs ago.) dist to w¹/₄ to ctr Sec Record 1912 is within 1' of record. dist from w¹/₄ to west approx ctr established in 1918 (2640') is within 1' to a fence line north. The E-W Road @ w¹/₄ cor has reportedly been reworked since 1918

The w¹/₄ cor is also on a straight line N-S.