

CERTIFICATE OF LOCATION OF GOVERNMENT CORNER

Corner to Section 20 Township 114 N Range 39 W No. _____

STATE OF MINNESOTA,

County of Yellow Medicine S.S.

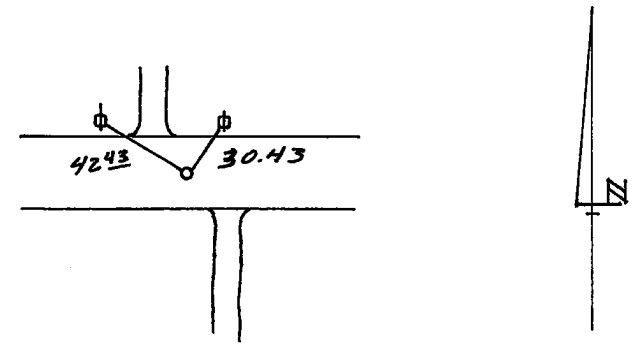
I hereby certify that on the 1st day of July 1980,
that I, Lyle E. Moseng, a Registered Land Surveyor, ~~County Surveyor,~~

~~County Highway Engineer,~~ ^{SET} found the North Quarter corner of Section 20
_____ which was evidenced by _____ see back

_____ and I further certify that to perpetuate the
location of such corner I did, at the exact location thereof, place a permanent
marker consisting of 5/8" rerod w/seal 6" below existing gravel surface.

I further certify that I established 2 references or witness monuments consist-
ing of a power pole & brace pole which reference or witness monuments are
located in the manner following.

Dh nail & bc in PP NE 30.43 ft
Dh nail & bc in brace pole NW 42.43 ft



Dated at Marshall, Minnesota, this 14th day of July, 1980.

Lyle E. Moseng
~~County Surveyor, County Highway Engineer,~~
Registered Land Surveyor No. 11943

183010
OFFICE OF THE REGISTER OF DEEDS
County of Yellow Medicine

I hereby certify that the within instrument was filed in this office for
record on the 16 day of November A.D., 1983 at 2:40 o'clock P.M.

Norman J. Opdahl, County Recorder
Register of Deeds
by Kay Nordahl Deputy

We dug a hole with a backhoe and found nothing; we set the corner on line and midway between the section corners. Total distance was 5278.65 feet, midway was 2639.325 feet.