

CERTIFICATE OF LOCATION OF GOVERNMENT CORNER

Corner to Section 20 Township 114 N. Range 41 W. No. _____

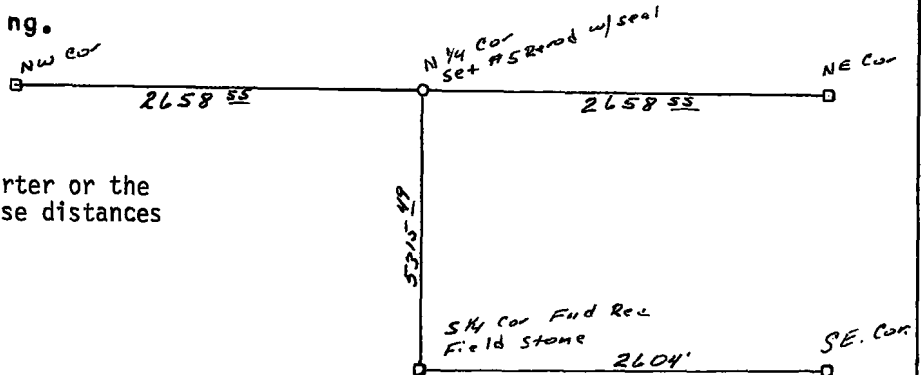
STATE OF MINNESOTA,

County of Yellow Medicine S.S.

I hereby certify that on the 3rd day of June 1980,
that I, Lyle E. Moseng, a Registered Land Surveyor, ~~County Surveyor,~~
~~County Highway Engineer,~~ Set North Quarter
found the South Quarter corner of Section 20
No. 5 Rerod With Seal 11943
which was evidenced by Field Stone

and I further certify that to perpetuate the
location of such corner I did, at the exact location thereof, place a permanent
marker consisting of _____.

I further certify that I established _____ references or witness monuments consist-
ing of There was nothing to tie it to. which reference or witness monuments are
located in the manner following.



There was nothing to tie the North Quarter or the
South Quarter Corner to, but with these distances
the corners should be relocated.

Dated at Marshall, Minnesota, this 28th day of July, 1980.

183017
OFFICE OF THE REGISTER OF DEEDS

County of Yellow Medicine

I hereby certify that the within instrument was filed in this office for
record on the 16 day of November A.D., 1983, at 3:15 o'clock P.M.

Norman J. Opdahl, County Recorder

Register of Deeds

by Kay Nordahl Deputy