

CERTIFICATE OF LOCATION OF GOVERNMENT CORNER

Corner to Section 20 Township 114 N. Range 41 W. No. _____

STATE OF MINNESOTA,

County of Yellow Medicine S.S.

I hereby certify that on the 3rd day of June 1980,
that I, Lyle E. Moseng, a Registered Land Surveyor, ~~County Surveyor~~,
~~County Highway Engineer~~, SET found the Northeast corner of Section 20
which was evidenced by R.R. Spike Set as P.I. by the Minn. Highway Dept.

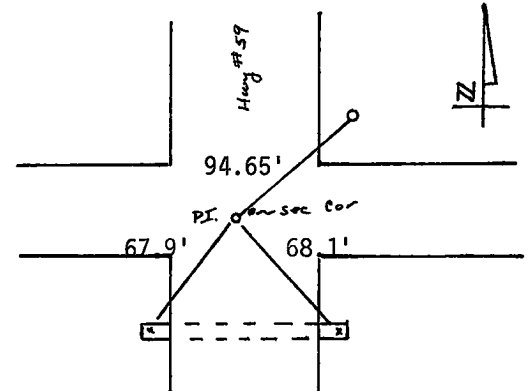
~~Set~~ and I further certify that to perpetuate the
location of such corner I did, at the exact location thereof, place a permanent
marker consisting of Set a PK Nail.

I further certify that I established 3 references or witness monuments consist-
ing of Highway B.M. X in Culvert which reference or witness monuments are

located in the manner following.

- X in Concrete Culvert SW. 67.9 ft.
- X in Concrete Culvert SE. 68.1 Ft.
- Conc. Bench Mark NE. 94.65 Ft.

NOTE TIES ARE TO HIGHWAY DEPT. PI. THE CORNER
IS LOCATED 1.3 ft. NORTH AND 0.9 FT. EAST OF
PI.



Dated at Marshall, Minnesota, this 28th day of July, 1980.

183018
OFFICE OF THE REGISTER OF DEEDS
County of Yellow Medicine

Lyle E. Moseng
~~County Surveyor~~, ~~County Highway Engineer~~,
Registered Land Surveyor No. 11943

I hereby certify that the within instrument was filed in this office for
record on the 16 day of November A.D., 1983 at 3:20 o'clock P.M.

Norman J. Opdahl, County Recorder
Register of Deeds
by Kay Nordahl Deputy