

# CERTIFICATE OF LOCATION OF GOVERNMENT CORNER

Corner to Section 36 Township 114 N Range 41 W No. \_\_\_\_\_

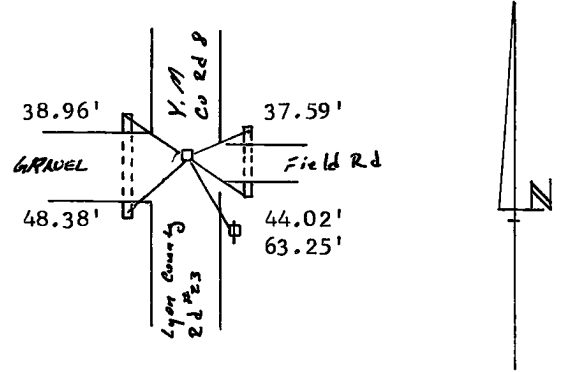
STATE OF MINNESOTA,

County of Yellow Medicine S.S.

I hereby certify that on the 7th day of April 1980,  
 that I, Lyle E. Moseng, a Registered Land Surveyor, ~~County Surveyor,~~  
~~County Highway Engineer,~~ found the Southwest corner of Section 36  
 \_\_\_\_\_ which was evidenced by A square cut granite 6"x6"; 18" below existing surface  
 \_\_\_\_\_ and I further certify that to perpetuate the  
 location of such corner I did, at the exact location thereof, place a permanent  
 marker consisting of a cast iron monument 6" below existing surface.

I further certify that I established 5 references or witness monuments consist-  
 ing of both ends of two cmp culverts & a power pole which reference or witness monuments are  
 located in the manner following.

- |                                   |             |
|-----------------------------------|-------------|
| Pk nail in top of 18" CMP culvert | NE 37.59 ft |
| Pk nail in top of 18" CMP culvert | SE 44.02 ft |
| Pk nail in top of 18" CMP culvert | SW 48.38 ft |
| Dh nail & bc in PP                | SE 63.25 ft |
| Pk nail in top of 18" CMP culvert | NW 38.96 ft |



Dated at Marshall, Minnesota, this 29th day of May, 1980.

**183019**

OFFICE OF THE REGISTER OF DEEDS

County of Yellow Medicine

Lyle E. Moseng  
~~County Surveyor, County Highway Engineer,~~  
 Registered Land Surveyor No. 11943

I hereby certify that the within instrument was filed in this office for  
 record on the 16 day of November A.D., 1983, at 3:25 o'clock P.M.

Norman J. Opdahl, Co. Recorder  
 Register of Deeds

by Kay Nordahl Deputy