

CERTIFICATE OF LOCATION OF GOVERNMENT CORNER

Corner to Section 36 Township 114 N Range 41 W

No. _____

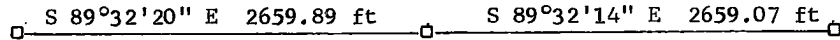
STATE OF MINNESOTA,

County of Yellow Medicine S.S.

I hereby certify that on the 27th day of March 1980,
that I, Lyle E. Moseng, a Registered Land Surveyor, ~~County Surveyor,~~
~~County Highway Engineer,~~ found the South Quarter corner of Section 36
_____ which was evidenced by a field stone with a 3/4" iron pin at it's side
_____ and I further certify that to perpetuate the
location of such corner I did, at the exact location thereof, place a permanent
marker consisting of a cast iron monument top of stone 6" below existing surface.

I further certify that I established 1 references or witness monuments consist-
ing of steel fence post which reference or witness monuments are
located in the manner following.

Steel fence post North 5.5 feet



Dated at Marshall, Minnesota, this 29th day of May, 1980.

Lyle E. Moseng
~~County Surveyor, County Highway Engineer,~~
Registered Land Surveyor No. 11943

183020
OFFICE OF THE REGISTER OF DEEDS

County of Yellow Medicine

I hereby certify that the within instrument was filed in this office for
record on the 16 day of November A.D., 1983, at 3:30 o'clock P.M.

Norman J. Opdahl, County Recorder
Register of Deeds

by Kay Nordahl Deputy