

CERTIFICATE OF LOCATION OF GOVERNMENT CORNER

Corner to Section 29 Township 114 N. Range 42 W. No. _____

STATE OF MINNESOTA,

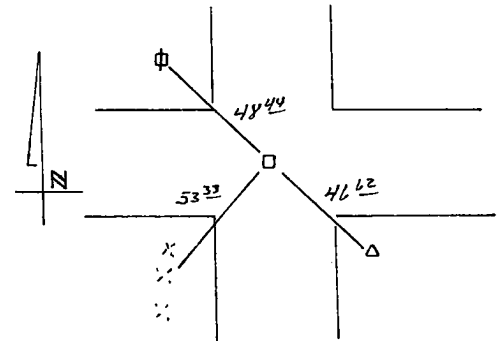
County of Yellow Medicine S.S.

I hereby certify that on the 25 th day of August 1983,
that I, Lyle E. Moseng, a Registered Land Surveyor, ~~County Surveyor,~~
~~County Highway Engineer~~, found the Northeast corner of Section 29-114-42
_____ which was evidenced by 6" Square cut Jasper Stone

_____ and I further certify that to perpetuate the
location of such corner I did, at the exact location thereof, place a permanent
marker consisting of a 5/8 inch rerod with seal on top of stone.

I further certify that I established 3 references or witness monuments consist-
ing of Fence post, Power pole, tele. pedistal which reference or witness monuments are
located in the manner following.

dh nail and seal in power pole NW. 48.44 feet
dh nail and seal on top of fence post SW. 53.33 feet
center of top of telephone pedistal SE. 46.62 feet



Dated at Marshall, Minnesota, this 26 th day of August, 1983.

Lyle E. Moseng
~~County Surveyor, County Highway Engineer,~~
Registered Land Surveyor No. 11943

183024
OFFICE OF THE REGISTER OF DEEDS
County of Yellow Medicine

I hereby certify that the within instrument was filed in this office for
record on the 16 day of November A.D., 1983 at 3:50 o'clock P.M.

Norman J. Opdahl, County Recorder
Register of Deeds
by Kay Nordahl Deputy