

Yellow Medicine

CERTIFICATE OF LOCATION OF GOVERNMENT CORNER

Corner to Section 5 Township 114 N. Range 43 W. No. _____

STATE OF MINNESOTA,

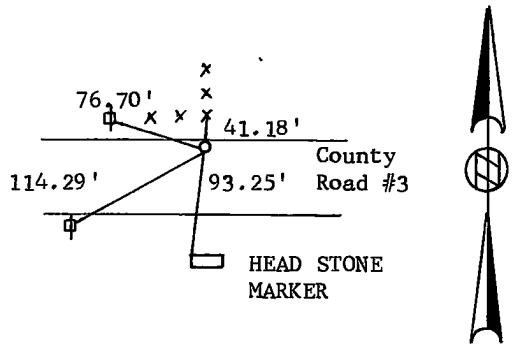
County of Yellow Medicine S.S.

I hereby certify that on the 10th day of October 1978,
that I, Lyle E. Moseng, a Registered Land Surveyor, ~~County Surveyor,~~
~~County Highway Engineer,~~ found the North Quarter corner of Section 5
which was evidenced by See Back

and I further certify that to perpetuate the
location of such corner I did, at the exact location thereof, place a permanent
marker consisting of 1 1/2 inch Iron Pipe.

I further certify that I established 4 references or witness monuments consist-
ing of corner fence post, power poles, head which reference or witness monuments are
stone marker in cemetery
located in the manner following.

- NORTH 41.18 FEET TO DH & BC IN CORNER FENCE POST
- SOUTH 93.25 FEET TO TOP OF NW CORNER OF HEAD STONE
JOHN & LENA THIELGES.
- SOUTHWEST 114.29 FEET TO DH & BC IN POWER POLE
- NORTHWEST 76.70 FEET TO DH & BC IN POWER POLE



Dated at Marshall, Minnesota, this 2nd day of January, 1979.

Lyle E. Moseng
~~County Surveyor, County Highway Engineer,~~
Registered Land Surveyor No. 11943

183032
OFFICE OF THE REGISTER OF DEEDS
County of Yellow Medicine

I hereby certify that the within instrument was filed in this office for
record on the 17 day of November A.D., 1983 at 3:10 o'clock P.M.

Norman J. Opdahl, County Recorder
Register of Deeds
by Kay Nordahl Deputy

We dug and found an large stone,18 inches around, 18 inches deep below the asphalt. Corner is 1 foot south of the north edge of the asphalt. This stone check out with the 1929 survey distance found in the County Courthouse.