

CERTIFICATE OF LOCATION OF GOVERNMENT CORNER

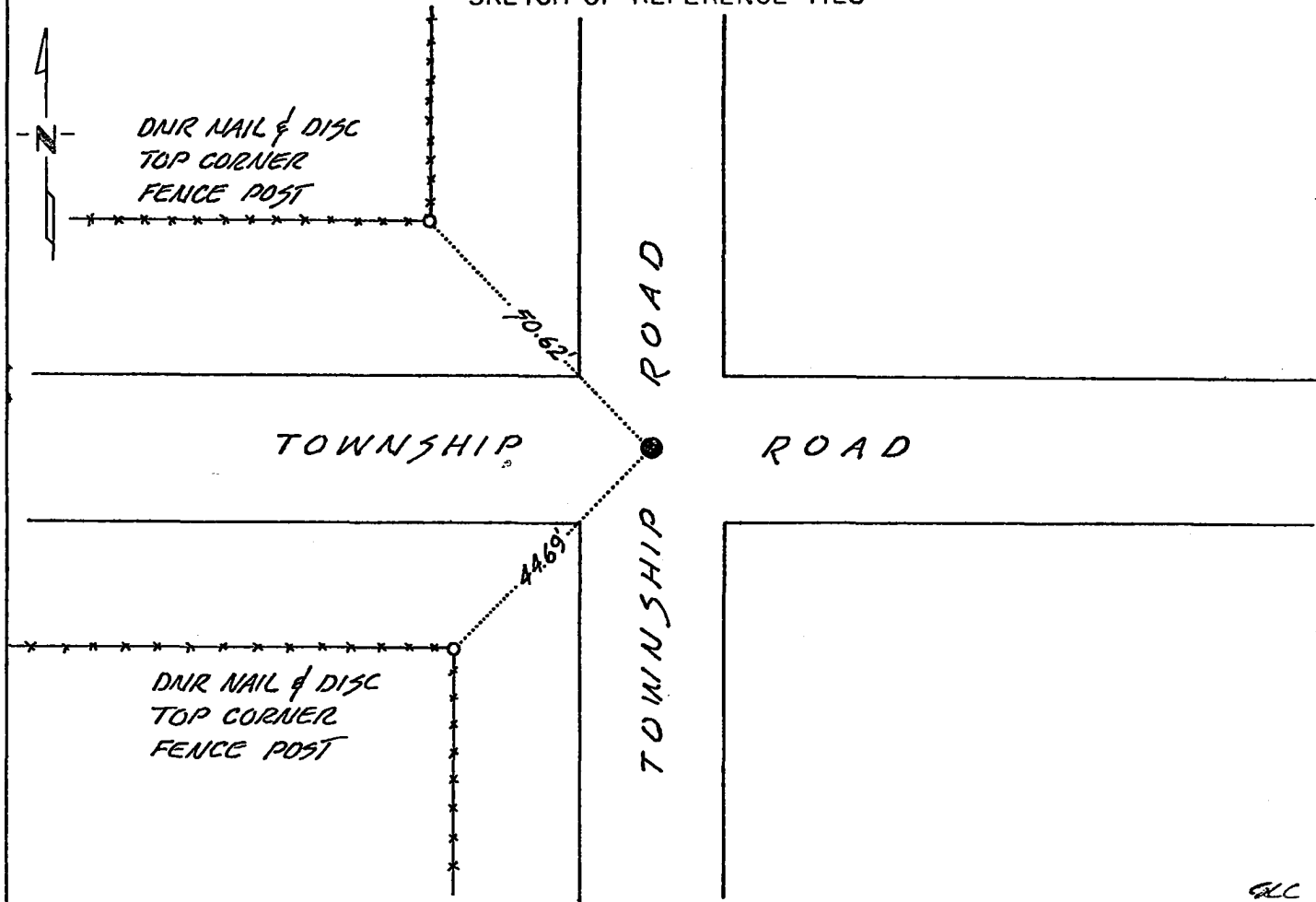
NORTHEAST Corner of Section 3, Township 115, Range 43, 5 P.M.

STATE OF MINNESOTA, County of YELLOW MEDICINE

At the corner location shown on the sketch:

- On 3-31-1981 found a 6"x6"x26" CUT GRANITE BLOCK DOWN 20"
DATE
- left monument as found, lowered monument, removed monument (explain)
- On 3-31-1981 placed a DNR CAST IRON MONUMENT DOWN 0.4' OVER SAID
DATE GRANITE BLOCK 1' WEST & 1' SOUTH OF P.I. OF ROADS.

SKETCH OF REFERENCE TIES



GLC

Statement of evidence relative to this corner location is on back of page. 6-879

I hereby certify that this document and the data contained herein was prepared by me or under my direct supervision.

Bert R. Evland 10-7-83
SIGNATURE DATE

Registration No. 10516

Land Surveyor, Professional Engineer

County Surveyor, County Engineer

OFFICE OF THE REGISTER OF DEEDS
County of Yellow Medicine

I hereby certify that this document was filed in the County Recorder's office at 9:20 A.M. on the 5 day of December A.D., 1983

Register of Deeds Norman J. Opdahl,
County Recorder

By Kay Nordahe, Deputy

DOCUMENT NO. 183104

Statement of Evidence: Northeast Corner Section 3 Township 115 Range 43

This corner was originally established by the U.S. General Land Office survey in 1858. The government notes show corner marked with a wood post set in mound of earth with pits and trench dug around the mound.

On March, 1981, the DNR Bureau of Engineering contacted the Yellow Medicine and the Lac Qui Parle County Offices of the Recorder and Highway Engineer for corner information.

The following information was obtained from the Yellow Medicine County Recorder's Office:

In survey book "B", John Norgaard, Surveyor, states in 1901 that he found a stake in the government mound and set a granite stone level with the ground to perpetuate the corner.

The following information was obtained from the Lac Qui Parle County Recorder's Office:

In Surveyor's record book #2 on Page 76, Berner Laftfield, Land Surveyor, in April, 1925, found a cut granite stone marking the corner.

On March 31, 1981, the DNR hired backhoe operator Donovan Wigers, of Boyd, and a 4'x8' hole revealed a cut granite block as shown and described on this certificate. Monument tied in as shown on this sketch.

Traverse information is available from the DNR Bureau of Engineering.