

# CERTIFICATE OF LOCATION OF GOVERNMENT CORNER

SOUTHWEST Corner of Section 26, Township 115, Range 40, 5th P.M.

STATE OF MINNESOTA, County of YELLOW MEDICINE

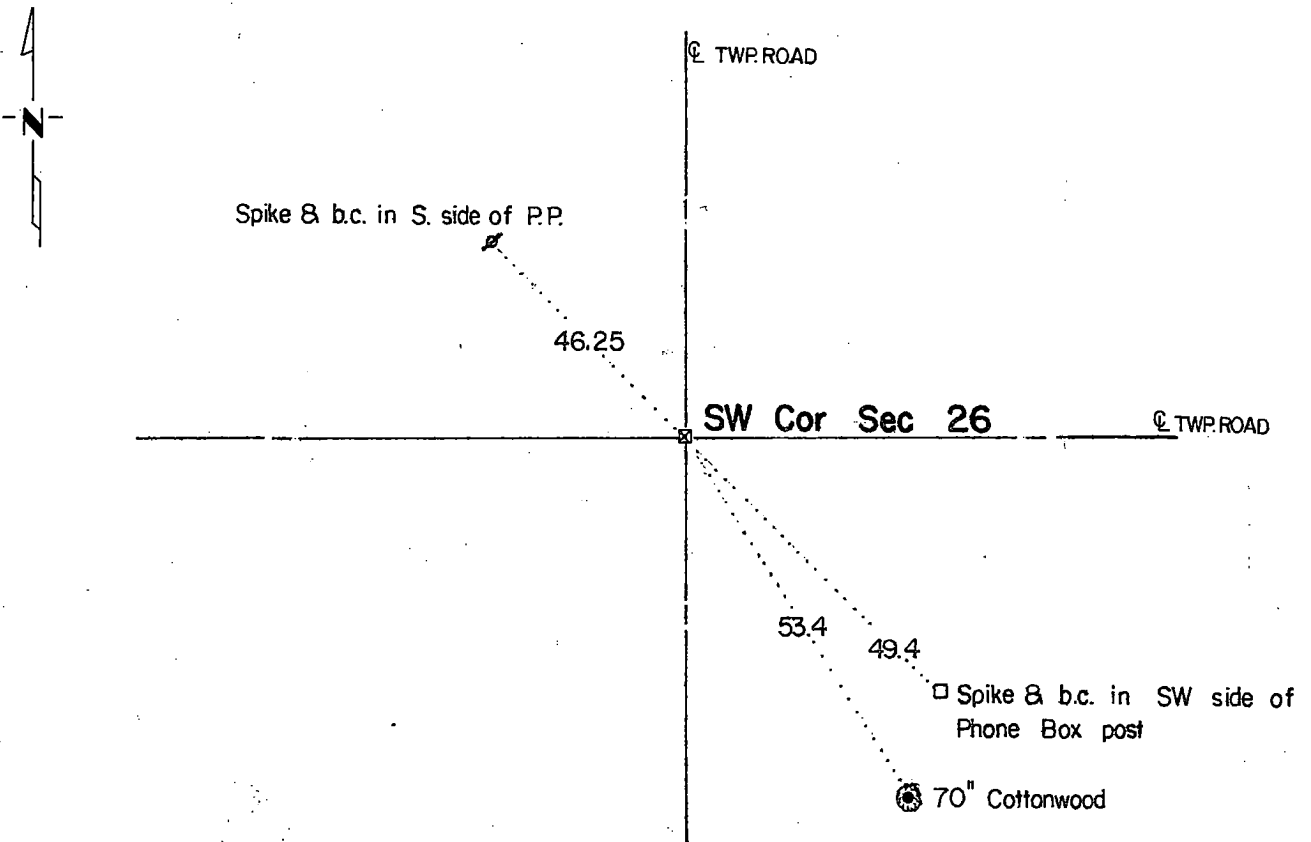
At the corner location shown on the sketch:

On June 30, 1983 found a 9"x7"x30" Field Stone with a wooden stake over it.  
DATE

left monument as found,  lowered monument,  removed monument (explain)

On June 30, 1983 placed a 3/4" capped iron pipe over stone.  
DATE

### SKETCH OF REFERENCE TIES



Statement of evidence relative to this corner location is on back of page.

RECORDED  
GRANTOR  
GIVEN  
INDEXED

I hereby certify that this document and the data contained herein was prepared by me or under my direct supervision.

Duane A. Bonema SIGNATURE March 2, 1984 DATE

Registration No. 14895

Land Surveyor,  Professional Engineer

County Surveyor,  County Engineer

OFFICE OF THE COUNTY RECORDER  
County of Yellow Medicine

I hereby certify that this document was filed in the Co. Recorders office at 9:35 A.M. on the 23 day of March A.D., 1984

County Recorder Norman J. Opdahl

By Kay Nordahl, Deputy

DOCUMENT NO. 183651

Statement of Evidence: SW Cor. Sec. 26 T115N-R40W

Sept. 22, 1864	Original Government Land Office Survey by C.E. Davis & I.W. Webb Jr.
July 27, 1891	The County Surveyor records in the County Surveyor's Record Book page 48 that he measured from the NW Corner of Section 26 to the W $\frac{1}{4}$ Corner of Section 35 and placed this corner by using single proportionate measure.
May 1899 & Sept.27, 1901	<i>John Norgaard, County Surveyor, during his re-monumentation of the county, states "Found Stake at the intersection of roads said by Bsekllle to be where the government corner used to be. Set top of monument level with ground."</i>
1939	The Yellow Medicine Co. Highway Engineer's Office recorded witness monuments to this corner. These witness pionts have all been destroyed except possibly a power pole to the NW 45.7 feet.
June 30, 1983	Duane A. Bonnema, RLS 14895, dug a 3'x3'x40" deep hole at the intersection of the two roads and I found a 9"x7"x30" field stone with a wooden stake over it.