

# CERTIFICATE OF LOCATION OF GOVERNMENT CORNER

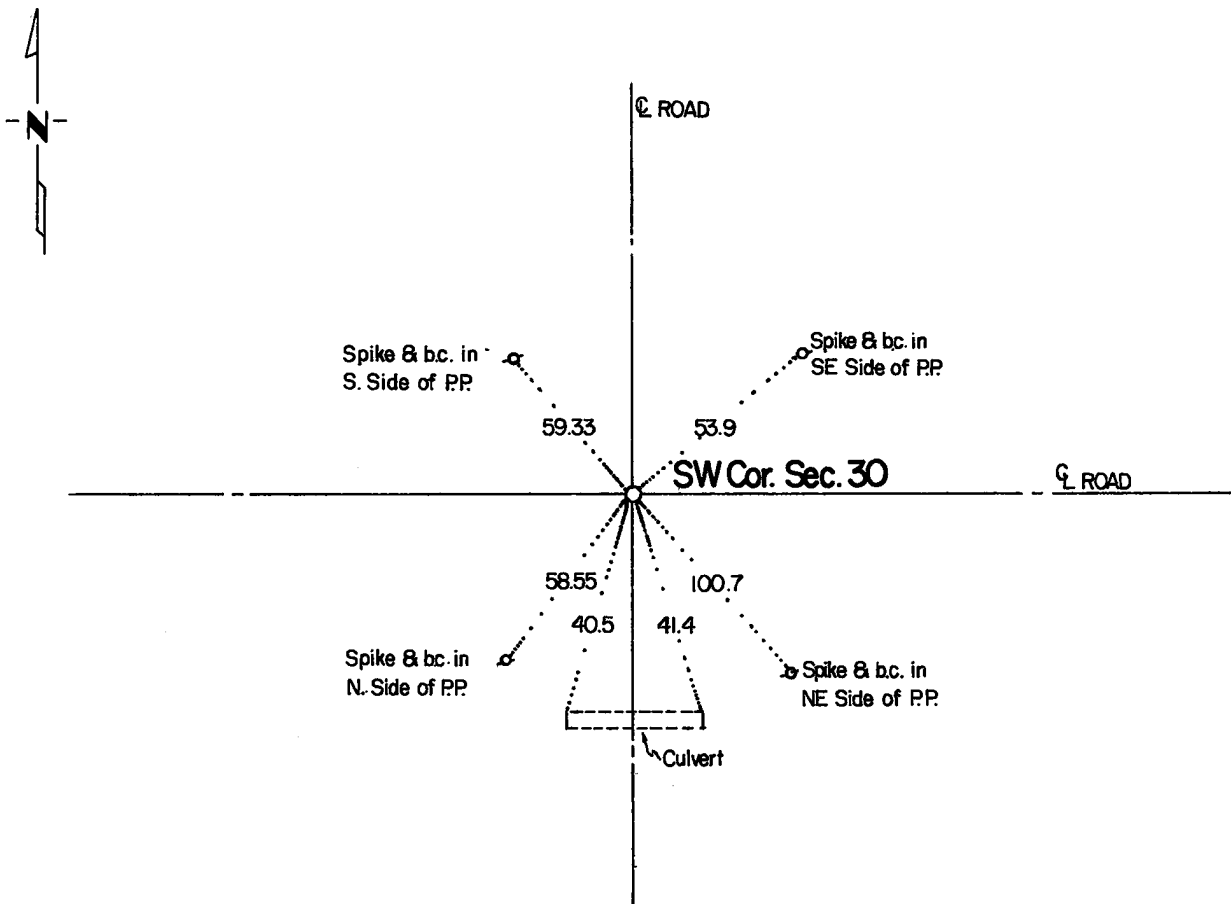
SW Corner of Section 30, Township 114, Range 39, 5th P.M.

STATE OF MINNESOTA, County of Yellow Medicine

At the corner location shown on the sketch:

- On \_\_\_\_\_ found a \_\_\_\_\_  
DATE
- left monument as found,  lowered monument,  removed monument (explain)
- On Oct. 5, 1983 placed a Capped 3/4" Iron pipe by using Yellow Medicine  
DATE  
County Engineer's Office witness points.

### SKETCH OF REFERENCE TIES



Statement of evidence relative to this corner location is on back of page.

RECORDED  
GRANTED  
INDEXED

I hereby certify that this document and the data contained herein was prepared by me or under my direct supervision.

Duane A. Bonroma March 2, 1984  
SIGNATURE DATE

Registration No. 14895  
 Land Surveyor,  Professional Engineer  
 County Surveyor,  County Engineer

OFFICE OF THE COUNTY RECORDER  
County of Yellow Medicine

I hereby certify that this document was filed in the Co. Recorders office at 9:40 A.M. on the 23 day of March A.D., 19 84

County Recorder Norman J. Opdahl  
By Kay Verdahl, Deputy  
DOCUMENT NO. 183652

Statement of Evidence: SW Cor. Sec. 30 T114N-R39W

- Oct. 16 1897      John Norgaard, County Surveyor, set an 8"x8" Marked stone at the Southwest Corner of Section 31.
- 1900                John Norgaard, County Surveyor, notes in his re-monumentation survey of the county "Found Stone located by me 5 years ago on line and at equal distance between the Northwest Corner Section 30 and the Southwest Corner Section 31. Set top of monument level with the ground."
- June 1910         John Norgaard, County Surveyor, notes in the County Surveyor's Record Book page 217 & 219 that he used this corner but doesn't describe the corner monument.
- 1920                John Norgaard, County Surveyor, notes in the County Surveyor's Record Book page 426 that he used this corner but doesn't describe the corner monument.
- 1963                The Yellow Medicine County Highway Engineer's Office noted witness points to a Granite monument 3 feet deep at this corner.
- Oct. 5, 1983      Duane A. Bonnema, RLS 14895, placed a 3/4" capped iron monument at the corner location using the witness points obtained from the County Highway Engineer's Office.