

# CERTIFICATE OF LOCATION OF GOVERNMENT CORNER

SE Corner of Section 30, Township 114, Range 39, 5th P.M.

STATE OF MINNESOTA, County of Yellow Medicine

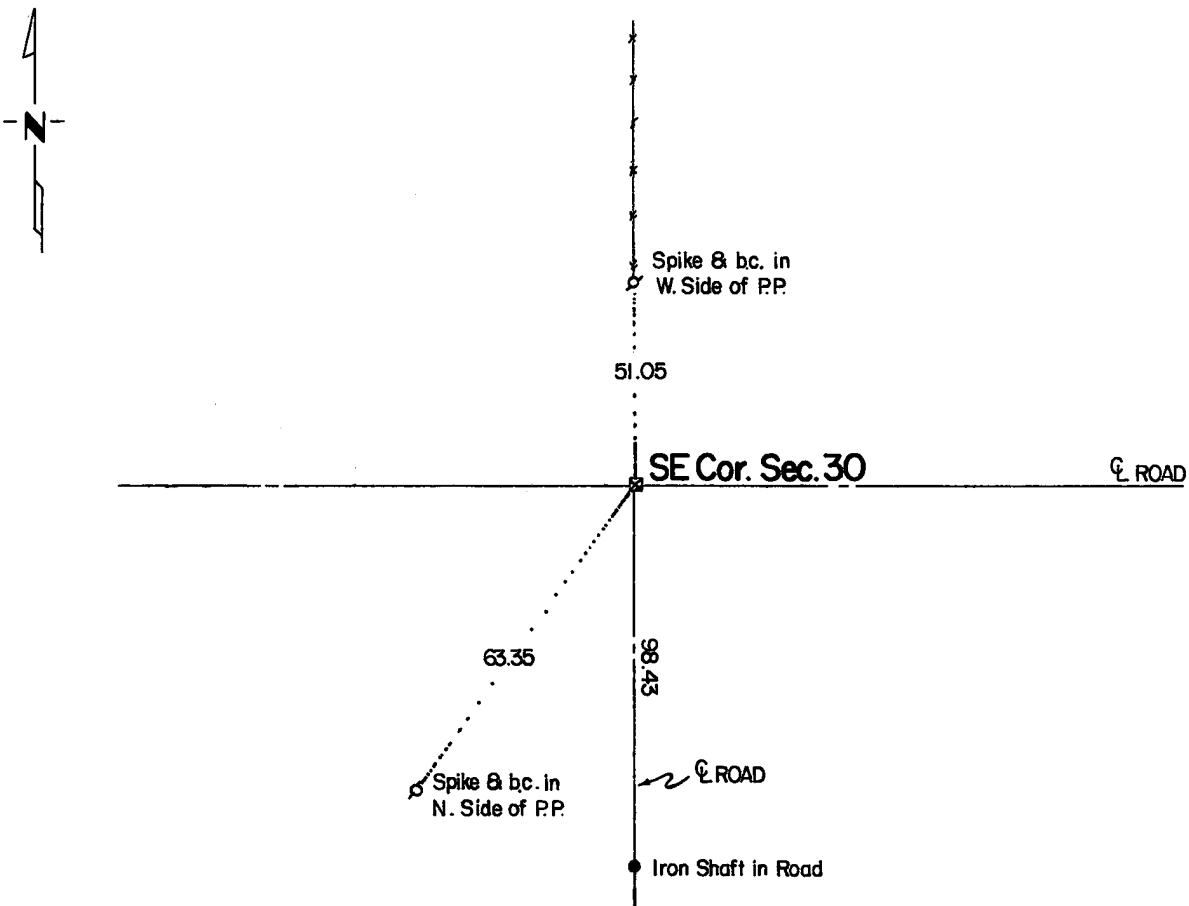
At the corner location shown on the sketch:

On Oct. 5, 1983 found a 6"x6" Granite stone 16" below pavement surface  
DATE

left monument as found,  lowered monument,  removed monument (explain)

On Oct. 5, 1983 placed a 3/4" Capped iron pipe over granite monument  
DATE

### SKETCH OF REFERENCE TIES



Statement of evidence relative to this corner location is on back of page.

RECORDED  
GRANTOR  
GRANTEE  
INDEXED

I hereby certify that this document and the data contained herein was prepared by me or under my direct supervision.

Duane A. Bonnum Jan. 30, 1984  
SIGNATURE DATE

Registration No. 14895

- Land Surveyor,  Professional Engineer  
 County Surveyor,  County Engineer

OFFICE OF THE COUNTY RECORDER  
 County of Yellow Medicine

I hereby certify that this document was filed in the Co. Recorders office at 9:45 A.M. on the 23 day of March A.D., 19 84

County Recorder Norman J. Opdahl

By Kay Nordahl, Deputy

DOCUMENT NO. 183653

Statement of Evidence: SE Cor. Sec. 30 T114N-R39W

- Nov. 19, 1889. Jonah Peterman, County Surveyor, records in the County Surveyor's Record Book page 32 that he measured to this corner but doesn't state what it is.
- 1900 John Norgaard in his re-monumentation survey of the county records "Found the remains of old Stake in Government Mound. Set to of monument level with ground."
- June 15, 1910 John Norgaard, County Surveyor, records in the County Surveyor's Record Book page 217 that he measured to this corner but doesn't state what it is.
- 1920 John Norgaard, County Surveyor, records in the County Surveyor's Record Book page 439 that he used this corner.
- 1963 Yellow Medicine County Highway Department recorded witness points to a "Granite Monument Inp."
- Oct. 5, 1983 Duane A. Bonnema, RLS 14895, found a 6"x 6" Granite Monument using the witness points on file at the County Highway Engineer's Office. This is believed to be the monument placed in the 1900 re-monumentation by Norgaard. Placed 3/4" capped iron monument over stone.