

CERTIFICATE OF LOCATION OF GOVERNMENT CORNER

SE _____ Corner of Section 26, Township 115, Range 40, 5th P.M.

STATE OF MINNESOTA, County of Yellow Medicine

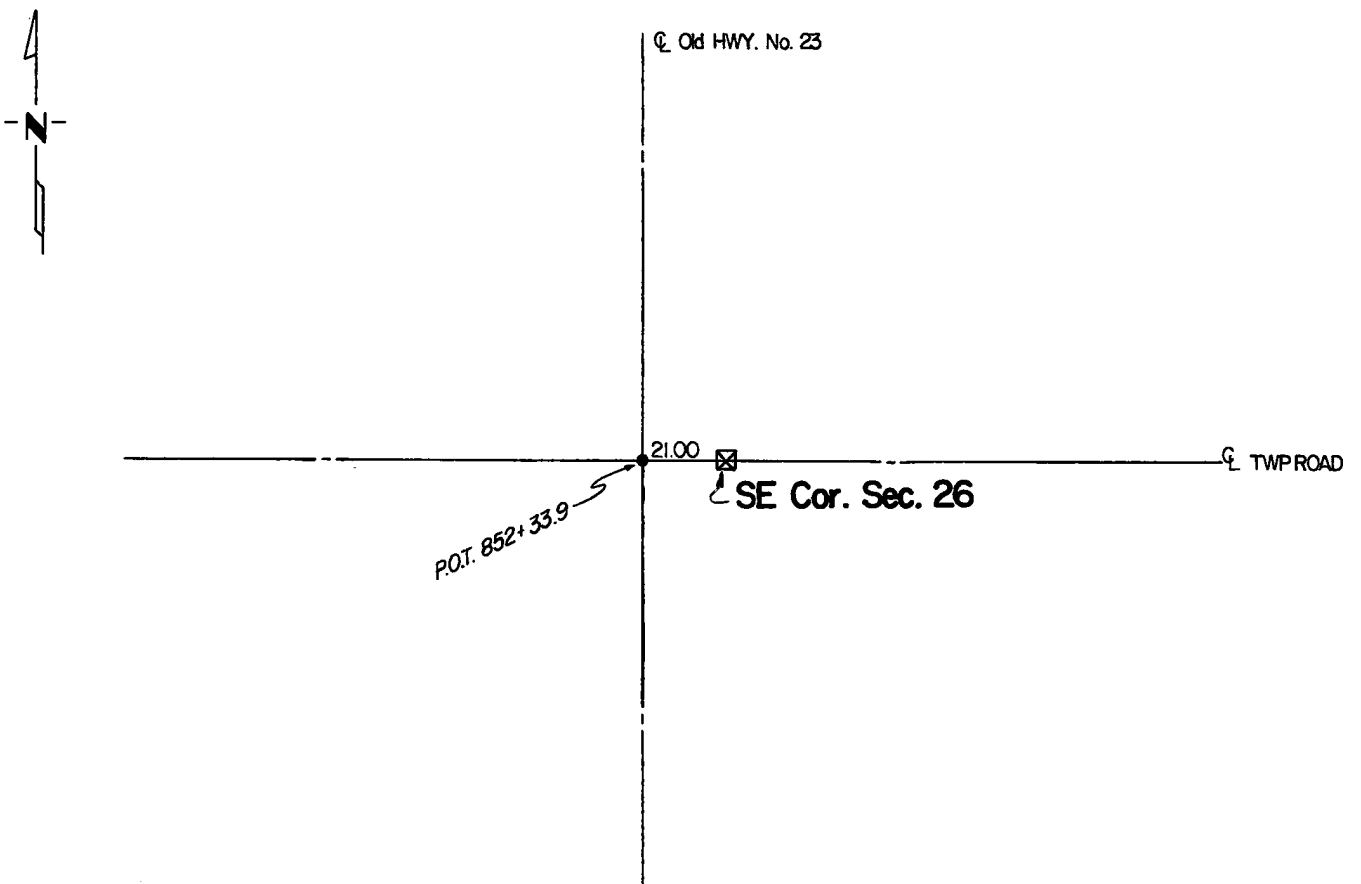
At the corner location shown on the sketch:

On June 30, 1983 found a 6"x6" Cut pink Granite Monument
DATE

left monument as found, lowered monument, removed monument (explain)

On June 30, 1983 placed a Capped 3/4" I.P.
DATE

SKETCH OF REFERENCE TIES



Statement of evidence relative to this corner location is on back of page.

RECORDED
GRANTED
INDEXED

I hereby certify that this document and the data contained herein was prepared by me or under my direct supervision.

Duane A. Bonomo Dec. 20, 1983
SIGNATURE DATE

Registration No. 14895

- Land Surveyor, Professional Engineer
 County Surveyor, County Engineer

OFFICE OF THE COUNTY RECORDER
 County of Yellow Medicine

I hereby certify that this document was filed in the Co. Recorders office at 9:50 A.M. on the 23 day of March A.D., 19 84

County Recorder Norman J. Opdahl

By Kay Nordahl, Deputy

DOCUMENT NO. 183654

Statement of Evidence: SE Cor. Sec. 26 T115N-R40W

Sept. 22, 1864	Original Government Land Office Survey done by C.E. Davis & J.W. Webb Jr.
May 1899-Sept.1901	John Norgaard, County Surveyor, records in the County Surveyors Record Book B, page 85 "Found stone and stake set by and agreed to by all the adjoining land owners several years ago. Set top of monument level with ground."
April 1918	John Norgaard, County Surveyor, records in the County Surveyors Record Book A, page 400 "Found Jasper Monument. Top 2" below surface of ground."
1920	John Norgaard, County Surveyor, records in the County Surveyors Record Book A, page 437 that he used this corner while doing a survey of Section 36.
Date Unknown	The Yellow Medicine County Highway Engineer's Office found the Section Corner and recorded some corner "ties".
Date Unknown	The Minnesota Highway Department notes on their right-of-way plans. "6"x6" Granite Monument Inp. 21.0' Rt of P.O.T. 852+33.9"
June 30, 1983	Duane A. Bonnema (RLS 14895) found 6"x6" pink Granite monument using the above Minnesota Hwy. Dept. information. Placed a capped 3/4" I.P. at pavement surface above stone monument. Found stone monument 1.4 feet below the road surface.