

CERTIFICATE OF LOCATION OF GOVERNMENT CORNER

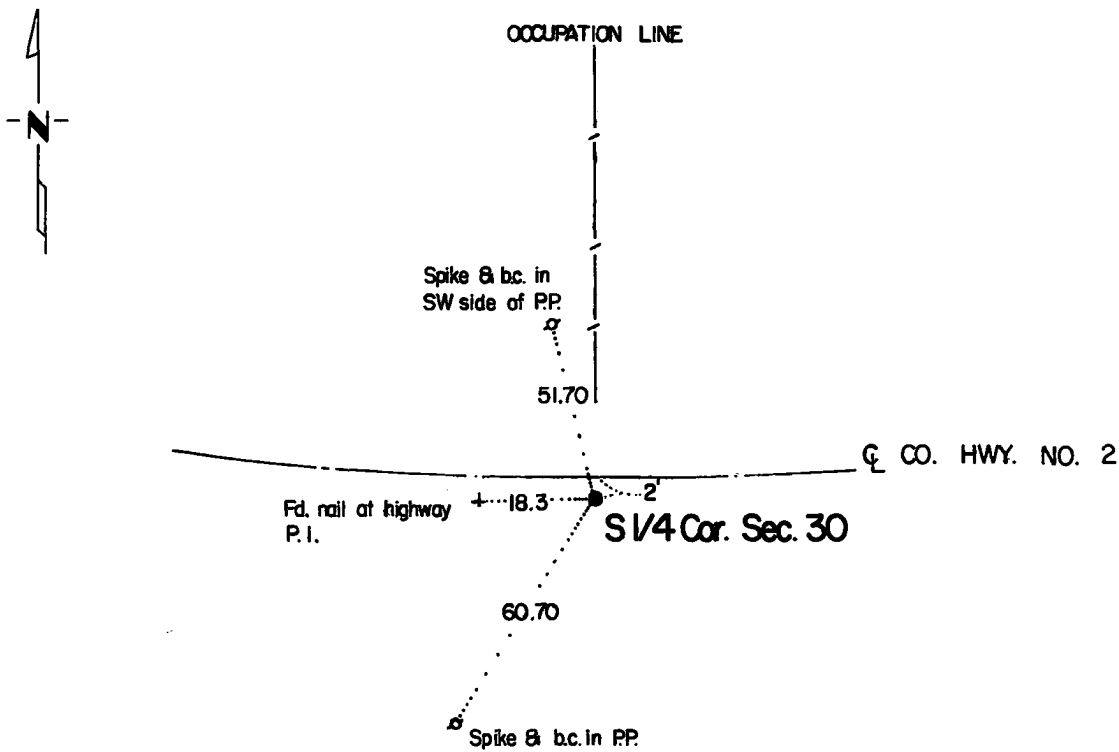
_____ S¹ _____ Corner of Section 30 _____, Township 114 _____, Range 39 _____, 5th P.M.

STATE OF MINNESOTA, County of Yellow Medicine

At the corner location shown on the sketch:

- On _____ found a _____
DATE
- left monument as found, lowered monument, removed monument (explain)
- On Oct 5, 1983 placed a 3/4" Capped iron pipe
DATE

SKETCH OF REFERENCE TIES



Statement of evidence relative to this corner location is on back of page.

RECORDED
GRANTOR
GRANTEE
INDEXED

I hereby certify that this document and the data contained herein was prepared by me or under my direct supervision.

Deane A. Benson SIGNATURE Feb. 2, 1984 DATE

Registration No. 14895

- Land Surveyor, Professional Engineer
- County Surveyor, County Engineer

OFFICE OF THE COUNTY RECORDER
County of Yellow Medicine

I hereby certify that this document was filed in the Co. Recorders office at 9:55 A.M. on the 23 day of March A.D., 19 84

County Recorder Norman B. Opdahl

By Kay Verdahl, Deputy

DOCUMENT NO. 183655

Statement of Evidence: S $\frac{1}{4}$ Cor. Sec. 30 T114N-R39W

- June 1910 John Norgaard, County Surveyor, records in the County Surveyors Record Book page 217 & 219 "Found old stake in Government Mound 89 feet south of line between Section Corners." Also Apparent later note on this survey "Survey for Town Road-used the S $\frac{1}{4}$ post as found in 1910."
- Oct. 5, 1983 Duane A. Bonnema, RLS 14895, placed a capped 3/4" iron monument 88.7 feet south of a line between section corners, also placed this corner at a ^{proportional} distance between the section corners based on gov't measure. Considering that John Norgaard didn't note placing a stone, also that the County Engineer's Office has never recovered this corner and it is located under at least 5 feet of fill on a paved highway I decided it wouldn't be proper to search for this corner.