

CERTIFICATE OF LOCATION OF GOVERNMENT CORNER

W $\frac{1}{4}$ Corner of Section 31, Township 116, Range 39, 5th P.M.

STATE OF MINNESOTA, County of Yellow Medicine

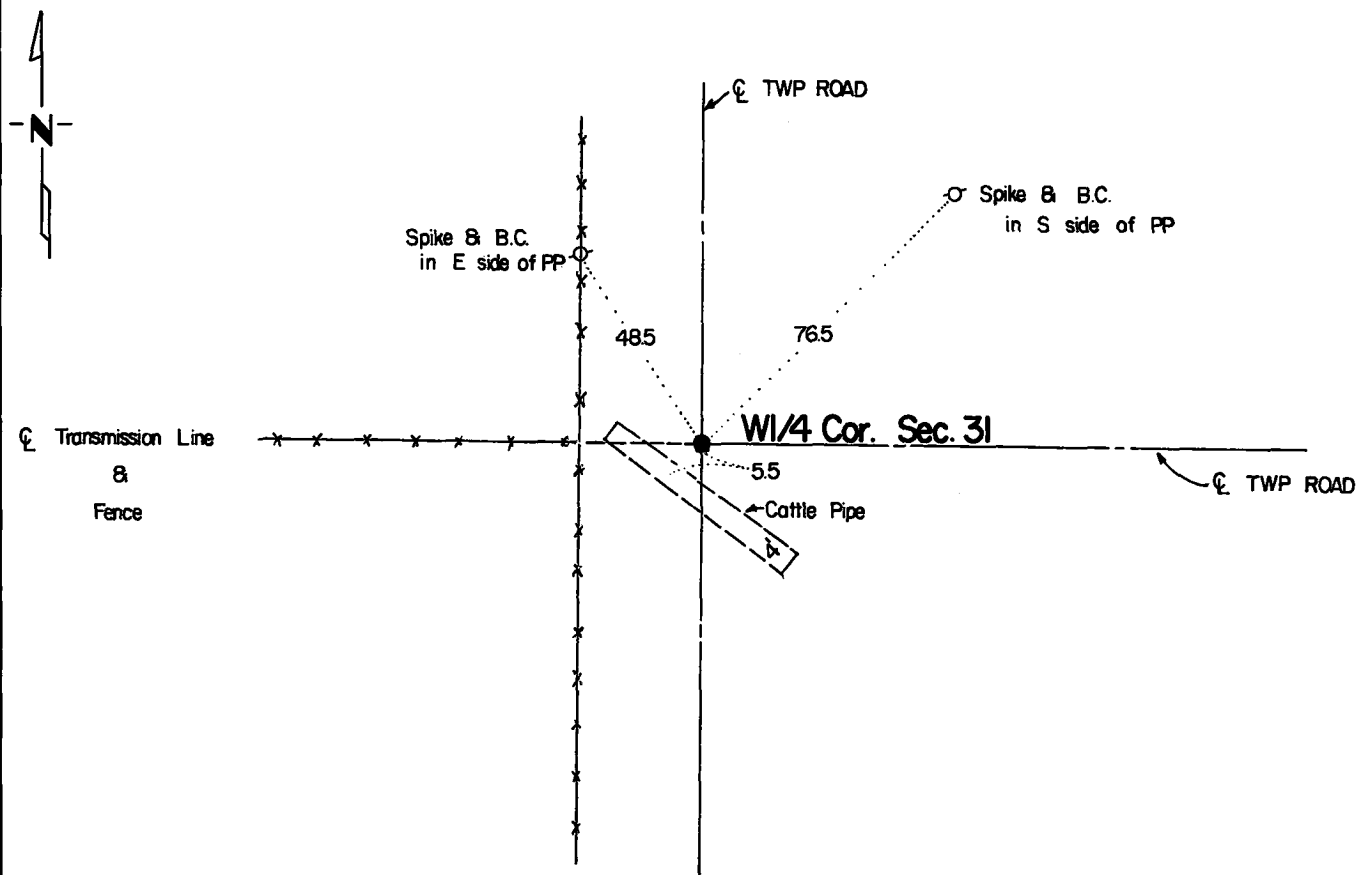
At the corner location shown on the sketch:

On Oct. 25, 1983 found a 2" x 2" Square Iron 30" below road surface
DATE

left monument as found, lowered monument, removed monument (explain)

On Oct. 25, 1983 placed a Capped Iron Pipe
DATE

SKETCH OF REFERENCE TIES



Statement of evidence relative to this corner location is on back of page.

RECORDED
GRANTED
GRANTEES
INDEXED

I hereby certify that this document and the data contained herein was prepared by me or under my direct supervision.

Duane A. Benvenuto Dec. 1, 1983
SIGNATURE DATE

Registration No. 14895

- Land Surveyor, Professional Engineer
 County Surveyor, County Engineer

OFFICE OF THE REGISTER OF DEEDS
 County of Yellow Medicine

I hereby certify that this document was filed in the Reg. of Deeds office at 10:00 A.M. on the 23 day of March A.D., 19 84

Register of Deeds Norman J. Optahl, Co. Recorder
 By Key Nordahl, Deputy

DOCUMENT NO. 183656

Statement of Evidence:

- June 1895 Original Government Land Office survey by Davis & Webb.
- Jan. 17, 1905 John Norgaard, County Surveyor, while doing a survey for a "town road" (County Surveyors Record page 189) makes reference to the West $\frac{1}{4}$ post Section 30.
- 1900 John Norgaard, County Surveyor, remonumented many section corners throughout Yellow Medicine County, although he apparently did not remonument the Quarter Corners.
- May 18, 1918 John Norgaard, County Surveyor, records in the County Surveyors Record page 403 "E $\frac{1}{4}$ post- Found Iron Rod set by me at equal distance and on line between Section Corner in 1900."
- Oct. 25, 1983 Duane A. Bonnema (RLS 14895) found a 2" x 2" square hollow iron 30" below road surface. measured 2643± to intersection to North (County Surveyors Record page 403) and measured 1324± South to fenceline (County Surveyors Record page 403.) Accepted as the corner placed by John Norgaard in 1900.