

# CERTIFICATE OF LOCATION OF GOVERNMENT CORNER

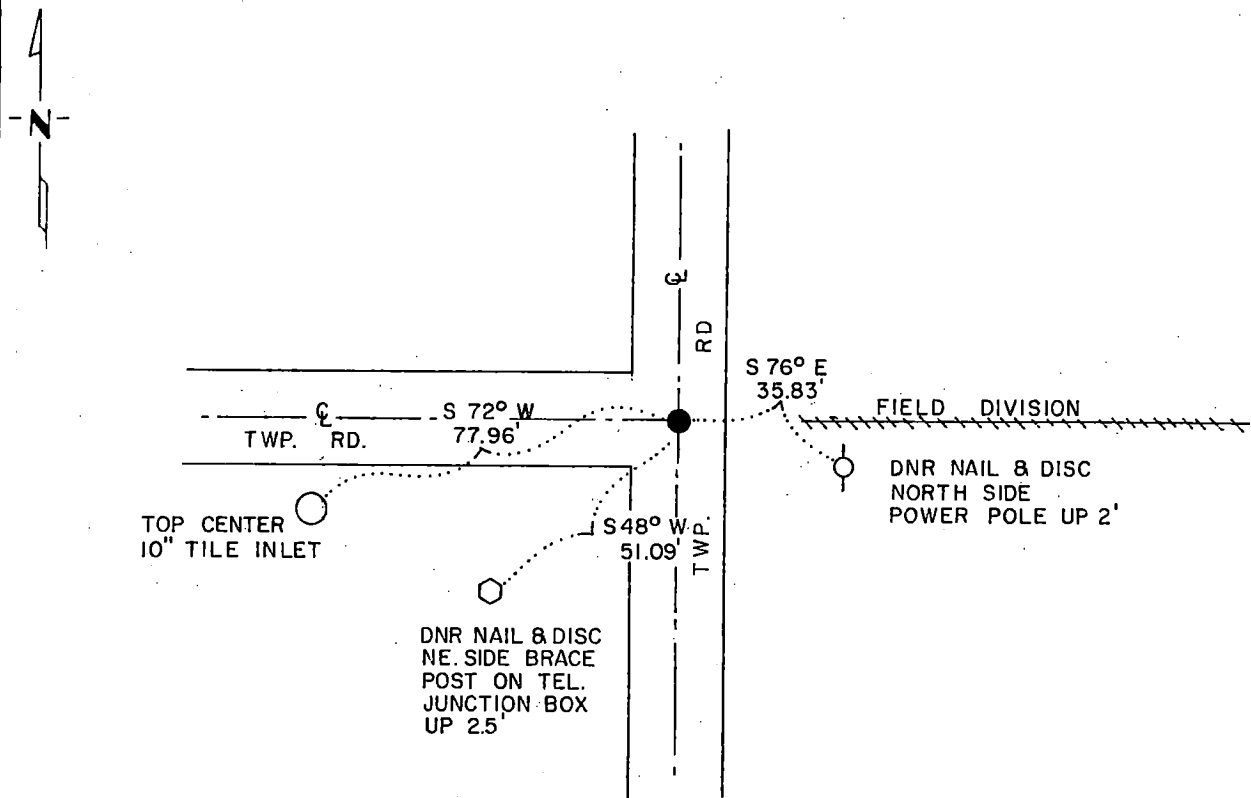
**NORTHEAST** Corner of Section 19, Township 115 N, Range 41 W, 5th P.M.

STATE OF MINNESOTA, County of YELLOW MEDICINE

At the corner location shown on the sketch:

- On 6/5/84 found a 6"x 6" GRANITE STONE, DOWN 0.3'  
DATE
- left monument as found,  lowered monument,  removed monument (explain)
- On 6/5/84 placed a 1/2"x 10" IRON ROD ON WEST SIDE STONE, AND A  
DATE 1/2"x 6" IRON ROD ON EAST SIDE STONE, DOWN 0.3'

### SKETCH OF REFERENCE TIES



### BEARINGS OBSERVED WITH COMPASS

Statement of evidence relative to this corner location is on back of page.

G-835  
6/22/84 J.A.G.

I hereby certify that this document and the data contained herein was prepared by me or under my direct supervision.

John D. Walker 11-8-84  
SIGNATURE DATE

Registration No. 16098

- Land Surveyor,  Professional Engineer
- County Surveyor,  County Engineer

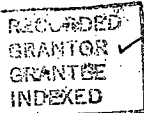
OFFICE OF THE COUNTY RECORDER  
 County of Yellow Medicine

I hereby certify that this document was filed in the Co. Recorders office at 9:20 A.M. on the 15 day of November A.D., 19 84

County Recorder Normand Opdahl

By \_\_\_\_\_, Deputy

DOCUMENT NO. 185087



**Northeast Corner Section 19, Township 115 North, Range 41 West**

This corner was originally established by the U. S. General Land Office survey in 1864. The government notes show corner marked with a wood post set in mound of earth with pits and trench dug around the mound.

In May 1984, the DNR Bureau of Engineering contacted the Yellow Medicine County Offices of the Recorder and Highway Engineer for corner information.

The following information was obtained from the County Recorder's Office: Surveyor's Record Book, on Page 74, contains a survey made by Jonah Peterman, County Surveyor, in December 1889. Survey mentions that the government corner was found.

Surveyor's Record Book, on Page 76, contains a survey made by John Norgaard, County Surveyor, in 1901. Survey does not mention what was found or set at corner. Corner is shown:

2664 feet from the north quarter corner of Section 19

2653 feet from the east quarter corner of Section 19

Surveyor's Record Book B, on Page 93, contains a survey made by John Norgaard, County Surveyor, in 1901. Survey mentions that the location of corner, which has been used by several surveyors, was found to be in the center of a north-south road and in line with a fence east. A 6 inch by 6 inch by 24 inch jasper granite was set to mark this location.

The following information was obtained from the DNR Bureau of Engineering Records:

In December 1961, the corner was assumed at the intersection of roads north, south and west. Survey does not mention what was set at corner.

The following ties are shown to corner:

power pole, east, 35.7 feet

telephone pole, southwest, 42.8 feet

The following information was obtained from the County Highway Engineer's Office:

A section corner tie book, date not indicated, does not mention what was found or set at corner, but the following ties are shown:

telephone pole, northwest 76.1 feet

telephone pole, east-southeast, 170.1 feet

fence post, north-northwest, 73.8 feet

fence post, west-northwest, 79.4 feet

fence post, southwest, 69.0 feet

On June 5, 1984, the DNR Bureau of Engineering traversed to the area of the corner and found a 6 inch by 6 inch cut granite stone. Searched for but did not find any previous ties.

Accept the stone as the location of the original government corner.

Traverse information is available from the DNR Bureau of Engineering.