

CERTIFICATE OF LOCATION OF GOVERNMENT CORNER

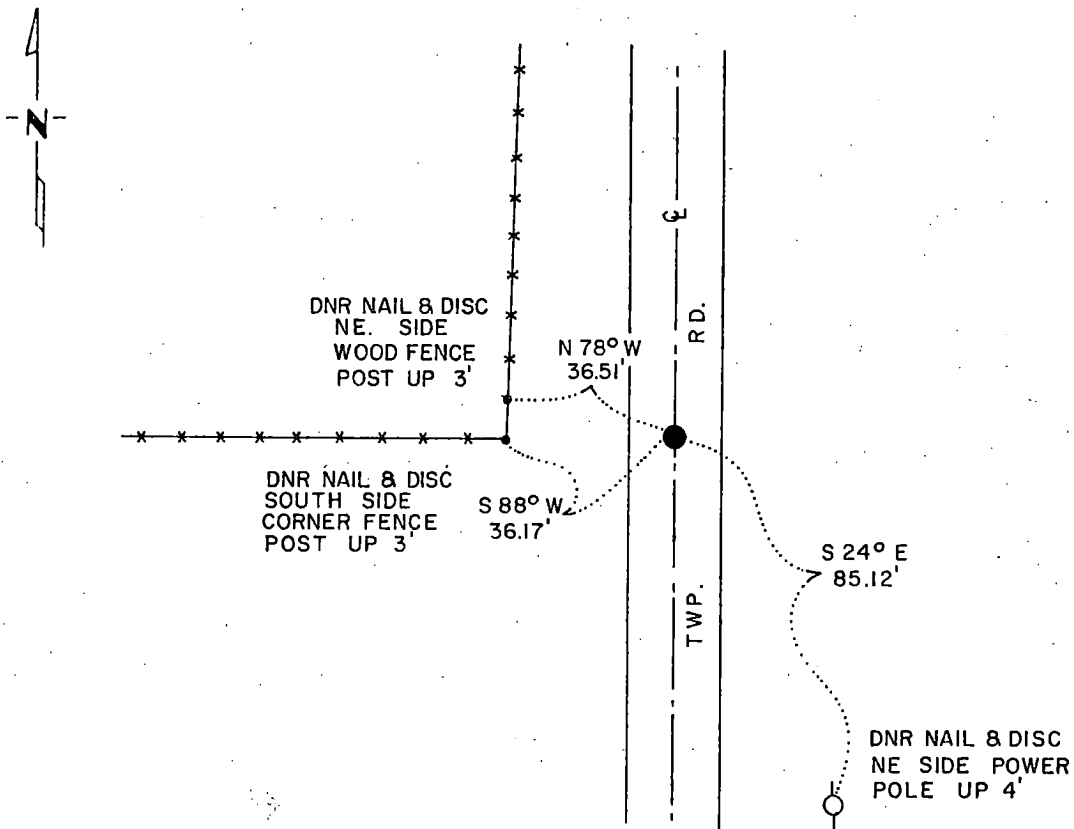
EAST QUARTER Corner of Section 19, Township 115 N, Range 41 W, 5th P.M.

STATE OF MINNESOTA, County of YELLOW MEDICINE

At the corner location shown on the sketch:

- On 6-7-84 found a 1" x 37" IRON ROD DOWN 17" WITH A DETERIORATED
DATE WOODEN STAKE BESIDE IRON ROD, DOWN 20"
- left monument as found, lowered monument, removed monument (explain)
- On 6-7-84 placed a 1 1/4" x 1 1/4" x 20" PERFORATED STEEL TUBE WITH
DATE ALUMINUM CAP STAMPED "DNR SURVEY MARKER", DOWN 0.3'

SKETCH OF REFERENCE TIES



BEARINGS OBSERVED WITH COMPASS

Statement of evidence relative to this corner location is on back of page.

G-835
6/22/84 J.A.G.

I hereby certify that this document and the data contained herein was prepared by me or under my direct supervision.

John D. Walker 11-8-84
SIGNATURE DATE

Registration No: 16098

Land Surveyor, Professional Engineer

County Surveyor, County Engineer

OFFICE OF THE COUNTY RECORDER
 County of Yellow Medicine

I hereby certify that this document was filed in the Co. Recorders office at 9:25 A.M. on the 15 day of November A.D., 19 84

County Recorder Norman S. Opdahl

By _____, Deputy

DOCUMENT NO. 185083

RECORDED
 GRANTOR ✓
 GRANTEE ✓
 INDEXED

East Quarter Corner Section 19, Township 115 North, Range 41 West

This corner was originally established by the U. S. General Land Office survey in 1864. The government notes show corner marked with a wood post set in mound of earth with pits and trench dug around the mound.

In May 1984, the DNR Bureau of Engineering contacted the Yellow Medicine County Offices of the Recorder and Highway Engineer for corner information.

The following information was obtained from the County Recorder's Office: Surveyor's Record Book, on Page 74, contains a survey made by Jonah Peterman, County Surveyor, in December 1889. Survey mentions that the government corner was found. Corner is shown 40.14 chains (2649.24 feet) from the southeast corner of Section 19, and stone is written by the corner.

Surveyor's Record Book, on Page 74, contains a survey made by John Norgaard, County Surveyor, in 1901. Survey states that Mr. Senovth planted willows 33 feet east of corner, when corner and stake were plain.

Surveyor's Record Book, on Page 76, contains a survey made by John Norgaard, County Surveyor, in 1901. Survey states that corner was established equal distance from section corners and 33 feet west of trees planted by Mr. Senovth. Survey does not mention what was set at corner. Corner is shown:

2653 feet from the northeast corner of Section 19
2653 feet from the southeast corner of Section 19

The following information was obtained from the D.N.R. Bureau of Engineering Records:

In December 1961, the corner was assumed at the intersection of the center line of a north-south road and a fence west. Survey does not mention what was set at corner. Corner is shown:

2650.4 feet from the northeast corner of Section 19
2657.7 feet from the southeast corner of Section 19

On June 5, 1984, the DNR Bureau of Engineering traversed to the area of the corner and located the intersection of the center line of a north-south road and a fence west.

On June 7, 1984, the D.N.R. Bureau of Engineering dug a hole, 2 feet east-west by 6 feet north-south the center being at the intersection of the center line of road and fence. A 1 inch by 37 inch iron rod was found down 17 inches at natural ground with a deteriorated wood stake beside it down 20 inches. The iron rod was found to be:

on the center line of the north-south road
in line with fence west
2657.54 feet from the northeast corner of Section 19
2657.02 feet from the southeast corner of Section 19

Accept the iron rod as the location of the original government corner, and reset it down 24 inches.

Traverse information is available from the DNR Bureau of Engineering.