

# CERTIFICATE OF LOCATION OF GOVERNMENT CORNER

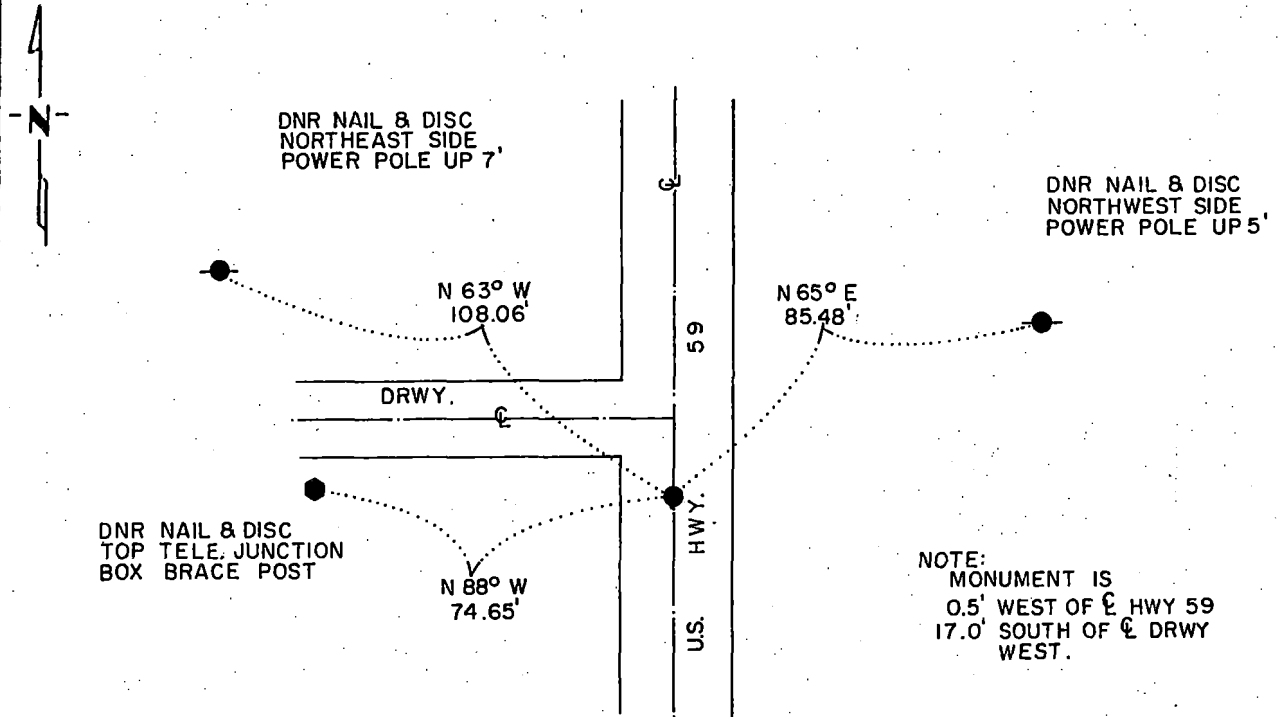
EAST QUARTER Corner of Section 20, Township 115 N., Range 41 W., 5th P.M.

STATE OF MINNESOTA, County of YELLOW MEDICINE

At the corner location shown on the sketch:

- On \_\_\_\_\_ found a \_\_\_\_\_  
DATE
- left monument as found,  lowered monument,  removed monument (explain)
- On 9-25-84 placed a 1 1/4" x 1 1/4" x 20" PERFORATED STEEL TUBE WITH  
DATE ALUMINUM CAP STAMPED "DNR SURVEY MARKER", FLUSH

### SKETCH OF REFERENCE TIES



### BEARINGS OBSERVED WITH COMPASS

Statement of evidence relative to this corner location is on back of page.

J.A.G. 10-2-84  
G-835

I hereby certify that this document and the data contained herein was prepared by me or under my direct supervision.

John D. Walker 11-8-84  
SIGNATURE DATE

Registration No. 16098

- Land Surveyor,  Professional Engineer  
 County Surveyor,  County Engineer

OFFICE OF THE COUNTY RECORDER  
County of Yellow Medicine

I hereby certify that this document was filed in the Co. Recorders office at 9:30 A.M. on the 15 day of November A.D., 19 84

County Recorder Norman Opatka  
By \_\_\_\_\_, Deputy

DOCUMENT NO. 185089

RECORDED  
GRANTOR ✓  
GRANTEE ✓  
INDEXED

**East Quarter Corner Section 20, Township 115 North, Range 41 West**

This corner was originally established by the U. S. General Land Office survey in 1864. The government notes show corner marked with a wood post set in mound of earth with pits and trench dug around the mound.

In May 1984, the DNR Bureau of Engineering contacted the Yellow Medicine County Offices of the Recorder and Highway Engineer for corner information.

The following information was obtained from the County Recorder's Office: Surveyor's Record Book, on Page 74, contains a survey made by Jonah Peterman, County Surveyor, in December 1889. Survey mentions that the government corner was found. Stone is written by the corner. Survey also shows a stone at the sixteenth corner north of corner, but no distance is shown to it.

The following information was obtained from the D.N.R. Bureau of Engineering Records:

In December 1961, this corner was established on line between the northeast and southeast corners of Section 20 and 2656.0 feet from the northeast corner. The distance of 2656.0 feet was double the distance from the northeast corner of Section 20 to a crop line west at the east sixteenth corner of the northeast quarter. This procedure left a distance of 2755.80 feet from corner to the southeast corner of Section 20. Survey does not indicate what was set to mark this location.

In April 1984, the DNR Bureau of Engineering received the following information from the Minnesota Department of Transportation Office in St. Paul:

A right-of-way map of U. S. Highway 59, date not indicated, shows the corner at station 451+05, which is on the center line of highway and in line with a fence west. Map does not indicate what was found or set at corner.

Computations per highway stationing, the corner is:

2669.7 feet from the northeast corner of Section 20  
2742.6 feet from the southeast corner of Section 20

On May 31, 1984, the DNR Bureau of Engineering traversed to the area of the corner and located center line stationing along U. S. Highway 59. Then a corner position was computed per Highway information. This position was found to be:

2670.38 feet from the northeast corner of Section 20  
2741.42 feet from the southeast corner of Section 20  
35.52 feet north and 0.26 of a foot west of the lost position.

Did not search for a stone at this location because area is in a cut section of road.

Accept the corner position per U. S. Highway 59 right-of-way map as the location of corner.

Traverse information is available from the DNR Bureau of Engineering.