

# CERTIFICATE OF LOCATION OF GOVERNMENT CORNER

NORTH QUARTER Corner of Section 20, Township 115 N., Range 41 W., 5th P.M.

STATE OF MINNESOTA, County of YELLOW MEDICINE

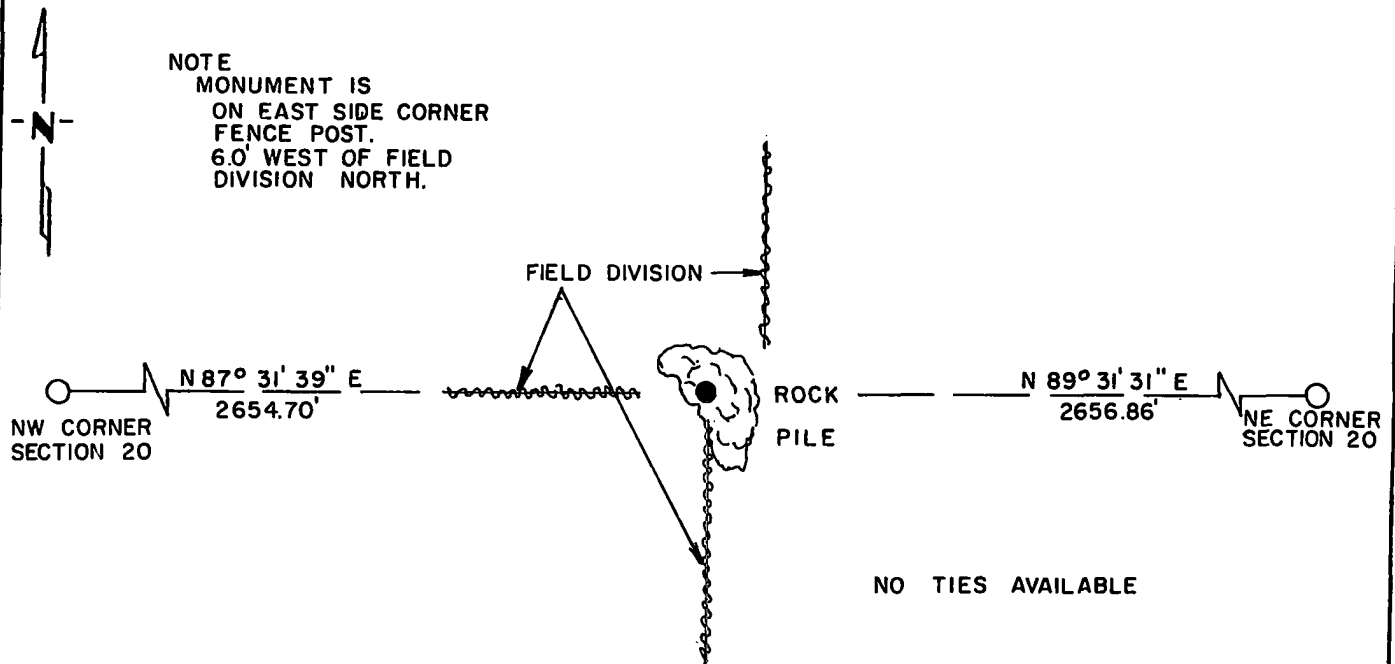
At the corner location shown on the sketch:

On 6-5-84 found a CORNER FENCE POST  
DATE

left monument as found,  lowered monument,  removed monument (explain)

On 9-26-84 placed a 1 1/4" x 1 1/4" x 20" PERFORATED STEEL TUBE WITH  
DATE ALUMINUM CAP STAMPED "DNR SURVEY MARKER", FLUSH

### SKETCH OF REFERENCE TIES



NO TIES AVAILABLE

BEARINGS ASSUMED

Statement of evidence relative to this corner location is on back of page.

J.A.G. 10-2-84  
G-835

I hereby certify that this document and the data contained herein was prepared by me or under my direct supervision.

John D. Walker 11-8-84  
SIGNATURE DATE

Registration No. 16098

Land Surveyor,  Professional Engineer  
 County Surveyor,  County Engineer

OFFICE OF THE COUNTY RECORDER  
 County of Yellow Medicine

I hereby certify that this document was filed in the Co. Recorders office at 9:35 A.M. on the 15 day of November A.D., 19 84

County Recorder Bernard J. Spitzer

By \_\_\_\_\_, Deputy

DOCUMENT NO. 185090

RECORDED  
 GRANTOR  
 GRANTEE  
 INDEXED

**North Quarter Corner Section 20, Township 115 North, Range 41 West**

**This corner was originally established by the U. S. General Land Office survey in 1864. The government notes show corner marked with a wood post set in mound of earth with pits and trench dug around the mound.**

**In May 1984, the DNR Bureau of Engineering contacted the Yellow Medicine County Offices of the Recorder and Highway Engineer for corner information.**

**The following information was obtained from the County Recorder's Office: Surveyor's Record Book, on Page 74, contains a survey made by Jonah Peterman, County Surveyor, in December 1889. Survey mentions that the government corner was found. Corner is shown 40.34 chains (2662.44 feet) from the northeast corner of Section 20. Survey also shows a distance of 79.86 chains (5270.76 feet) GLO measurement, between the northeast and northwest corners of Section 20.**

**The following information was obtained from the D.N.R. Bureau of Engineering Records:**

**In December 1961, a distance of 5312.4 feet was measured between the northeast and northwest corners of Section 20. Survey does not mention what was found or set at corner. Survey states that the north line of Section 20 is not a straight line. An occupation line in the area of corner is shown 2658.5 feet from the northeast corner of Section 20.**

**On June 5, 1984, the DNR Bureau of Engineering traversed to the area of the corner and found a corner fence post ( no fences around it) in a large rock pile, in line with field divisions west and south and 6 feet west of a field division north. Measured 2656.86 feet from the fence post to the northeast corner of Section 20 and 5310.75 feet between the northeast and northwest corners of Section 20. Fence post was found to be 46.26 feet north and 2.27 feet west of the lost position using GLO distances. A 1955 air photo shows a bend at this corner.**

**Accept the corner fence post as the location of the original government corner.**

**Traverse information is available from the DNR Bureau of Engineering.**