

CERTIFICATE OF LOCATION OF GOVERNMENT CORNER

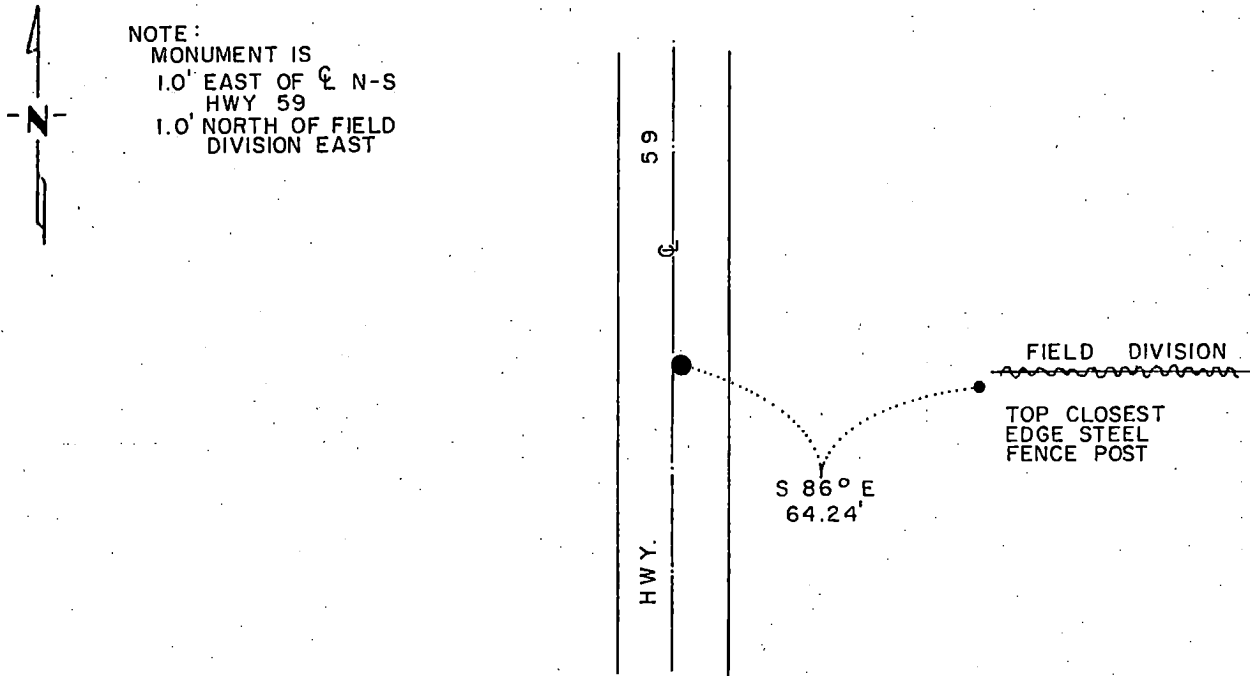
NORTHEAST Corner of Section 20, Township 115 N., Range 41 W., 5th P.M.

STATE OF MINNESOTA, County of YELLOW MEDICINE

At the corner location shown on the sketch:

- On _____ found a _____
- left monument as found, lowered monument, removed monument (explain)
- On 9-25-84 placed a 1 1/4" x 1 1/4" x 20" PERFORATED STEEL TUBE WITH
DATE ALUMINUM CAP STAMPED "DNR SURVEY MARKER", FLUSH

SKETCH OF REFERENCE TIES



BEARING OBSERVED WITH COMPASS

Statement of evidence relative to this corner location is on back of page.

J.A.G 10-2-84
G-835

I hereby certify that this document and the data contained herein was prepared by me or under my direct supervision.

John D. Walker 11-8-84
SIGNATURE DATE

Registration No. 16098
 Land Surveyor, Professional Engineer
 County Surveyor, County Engineer

OFFICE OF THE COUNTY RECORDER
 County of Yellow Medicine

I hereby certify that this document was filed in the Co. Recorders office at 9:40 A. M. on the 15 day of November A.D., 19 84

County Recorder Norman Spedden
 By _____, Deputy
 DOCUMENT NO. 185091

RECORDED
 GRANTOR ✓
 GRANTEE ✓
 INDEXED

Northeast Corner Section 20, Township 115 North, Range 41 West

This corner was originally established by the U. S. General Land Office survey in 1864. The government notes show corner marked with a wood post set in mound of earth with pits and trench dug around the mound.

In May 1984, the DNR Bureau of Engineering contacted the Yellow Medicine County Offices of the Recorder and Highway Engineer for corner information.

The following information was obtained from the County Recorder's Office: Surveyor's Record Book, on Page 74, contains a survey made by Jonah Peterman, County Surveyor, in December, 1889. Survey mentions that the government corner was found. Stone is written by the corner.

Surveyor's Record Book B, on Page 93, contains a survey made by John Norgaard, County Surveyor, in 1901. Survey mentions that a stake was found in the government mound, and a 6 inch by 6 inch by 24 inch jasper granite was set to mark this location.

Surveyor's Record Book B, on Page 453 contains a list of ties to government corners, date and surveyor not indicated. No information is given as to what was found or set at corner, but the following tie is shown:

corner post 50 feet east on section line

The following information was obtained from the DNR Bureau of Engineering Records:

In December 1961, the corner was established per a right-of-way map for U. S. Highway 59. Survey does not indicate what was set at corner.

In April 1984, the DNR Bureau of Engineering received the following information from the Minnesota Department of Transportation Office in St. Paul:

A right-of-way map for U. S. Highway 59, date not indicated, shows a stone in place at corner, 1.3 feet north of P.I. station 477+73.4.

On May 31, 1984, the DNR Bureau of Engineering traversed to the area of the corner and found a 3/4 inch iron rod at P.I. station 477+73.4, also located other stations along the center line.

On June 7, 1984, the D.N.R. Bureau of Engineering dug a hole, 2.5 feet east-west by 5.0 feet north-south the center being 1.3 feet north of P.I. station 477+73.4. At a depth of 30 inches an old road bed was encountered. Dug to a depth of 60 inches and then probed entire hole, but found nothing. Reset 3/4 inch iron rod at P.I. as found.

Accept the position per U. S. Highway 59 right-of-way map as the location of corner.

Traverse information is available from the DNR Bureau of Engineering.