

# CERTIFICATE OF LOCATION OF GOVERNMENT CORNER

NORTHEAST Corner of Section 29, Township 115 N, Range 41 W, 5th P.M.

STATE OF MINNESOTA, County of YELLOW MEDICINE

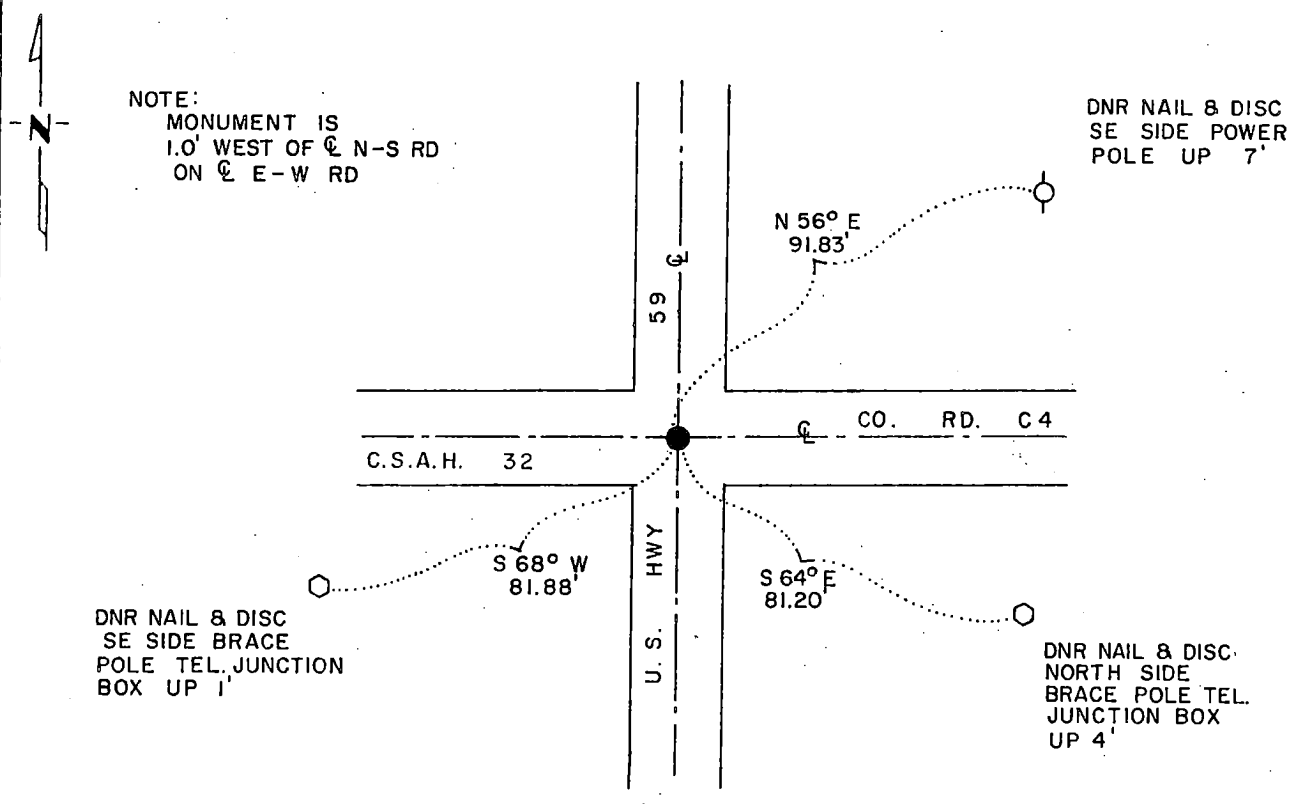
At the corner location shown on the sketch:

On 5/24/84 found a 6" x 6" GRANITE STONE DOWN 40"  
DATE

left monument as found,  lowered monument,  removed monument (explain)

On 5/24/84 placed a 1 1/4" x 1 1/4" x 20" PERFORATED STEEL TUBE WITH  
DATE  
ALUMINUM CAP STAMPED "DNR SURVEY MARKER", DOWN 0.1'

### SKETCH OF REFERENCE TIES



### BEARINGS OBSERVED WITH COMPASS

Statement of evidence relative to this corner location is on back of page.

G-835  
6/25/84 J.A.G.

I hereby certify that this document and the data contained herein was prepared by me or under my direct supervision.

John D. Walker 11-8-84  
SIGNATURE DATE

Registration No. 16098  
 Land Surveyor,  Professional Engineer  
 County Surveyor,  County Engineer

OFFICE OF THE COUNTY RECORDER  
County of Yellow Medicine

I hereby certify that this document was filed in the Co. Recorders office at 9:45 A.M. on the 15 day of November A.D., 19 84

County Recorder Thomas Update  
By \_\_\_\_\_, Deputy

DOCUMENT NO. 185092

RECORDED  
INDEXED  
FILED

Northeast Corner Section 29, Township 115 North, Range 41 West

This corner was originally established by the U. S. General Land Office survey in 1864. The government notes show corner marked with a wood post set in mound of earth with pits and trench dug around the mound.

In May 1984, the DNR Bureau of Engineering contacted the Yellow Medicine County Offices of the Recorder and Highway Engineer for corner information.

The following information was obtained from the County Recorder's Office: Surveyor's Record Book, on Page 74, contains a survey made by Jonah Peterman, County Surveyor, in December 1889. Survey mentions that the government corner was found. Stone is written by the corner.

Surveyor's Record Book B, on Page 93, contains a survey made by John Norgaard, County Surveyor, in 1901. Survey mentions that a stone and stake, which had been set in government mound by adjoining landowners, were found at corner, at the intersection of roads. A 6 inch by 6 inch by 24 inch Jasper granite was set to mark this location.

Surveyor's Record Book, on Page 453, contains a list of ties to government corners, date and surveyor not indicated. No information is given as to what was found or set at corner, but the following ties are shown:

- telephone pole, southwest, 38 feet
- sign post, southeast, 29.5 feet

The following information was obtained from the County Highway Engineer's Office:

A section corner tie book, date not indicated, does not mention what was found or set at corner, but the following ties are shown:

- telephone pole, southwest, 81.8 feet
- guide pole, southeast, 82.6 feet
- power pole, northeast, 83.5 feet
- concrete bench mark post, northwest, 98.1 feet

The following information was obtained from the D.N.R. Bureau of Engineering Records:

In December 1961, ties for corner were obtained from the County Highway Engineer's Office and a corner position was established from them.

Survey does not mention what was set at corner, but the following ties are shown:

- on center line of roads, north-south and east-west
- guide pole, southeast, 82.55 feet
- power pole, northeast, 83.53 feet
- bench mark, northwest, 98.05 feet

In April 1984, the DNR Bureau of Engineering received the following information from the Minnesota Department of Transportation Office in St. Paul:

A right-of-way map of U. S. Highway 59, date not indicated, shows a 6 inch by 6 inch stone monument in place at corner, at the intersection of roads north, south, east and west and 0.3 of a foot right of P.I. station 423+62.4.

On May 24, 1984, the DNR Bureau of Engineering traversed to the area of the corner and found U. S. Highway 59 P.I. station 423+62.4, a 3/4 inch by 6 inch iron rod, set over a 1 inch by 18 inch iron rod. Then easterly 0.34 of a foot from iron rods marking P.I. station, a 3/4 inch by 7 inch iron rod was found down 4 inches over a 1/2 inch by 10 inch rebar down 20 inches over a 6 inch by 6 inch cut granite stone down 40 inches. Two 1/2 inch by 10 inch rebars and a wood hub were found beside stone.

Accept the stone as the location of the original government corner. Left stone and irons beside it as found and reset irons marking P.I. station as found.

Traverse information is available from the DNR Bureau of Engineering.