

CERTIFICATE OF LOCATION OF GOVERNMENT CORNER

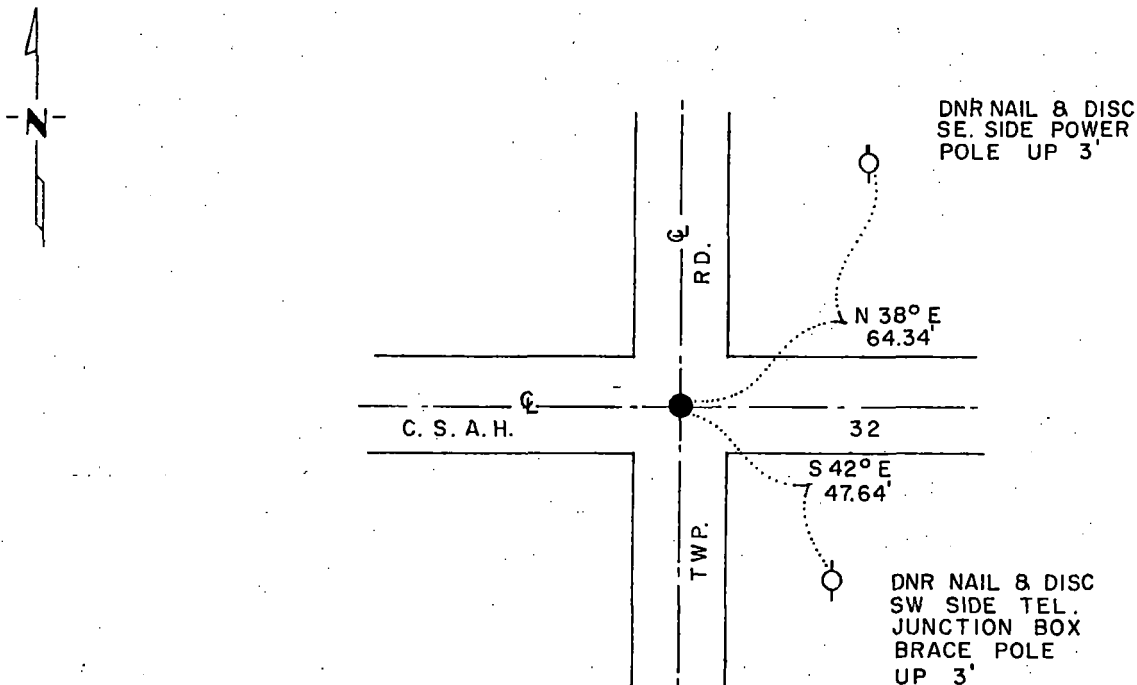
NORTHEAST Corner of Section 30, Township 115 N, Range 41 W, 5th P.M.

STATE OF MINNESOTA, County of YELLOW MEDICINE

At the corner location shown on the sketch:

- On 6/7/84 found a 6"x6" GRANITE STONE, DOWN 30"
DATE
- left monument as found, lowered monument, removed monument (explain)
- On 6/7/84 placed a 1 1/4" x 1 1/4" x 20" PERFORATED STEEL TUBE WITH
DATE ALUMINUM CAP STAMPED "DNR SURVEY MARKER", DOWN 0.3'

SKETCH OF REFERENCE TIES



BEARINGS OBSERVED WITH COMPASS

Statement of evidence relative to this corner location is on back of page.

G-835
6/22/84 J.A.G.

I hereby certify that this document and the data contained herein was prepared by me or under my direct supervision.

John D. Walker 11-8-84
SIGNATURE DATE

Registration No. 16098

- Land Surveyor, Professional Engineer
- County Surveyor, County Engineer

OFFICE OF THE COUNTY RECORDER
 County of Yellow Medicine

I hereby certify that this document was filed in the Co. Recorders office at 9:55 A. M. on the 15 day of November, A.D., 19 84

County Recorder Norman J. Opdala

By _____, Deputy

DOCUMENT NO. 185094

RECORDED
 GRANTOR ✓
 GRANTEE ✓
 INDEXED

Northeast Corner Section 30, Township 115 North, Range 41 West

This corner was originally established by the U. S. General Land Office survey in 1864. The government notes show corner marked with a wood post set in mound of earth with pits and trench dug around the mound.

In May 1984, the DNR Bureau of Engineering contacted the Yellow Medicine County Offices of the Recorder and Highway Engineer for corner information.

The following information was obtained from the County Recorder's Office:
Surveyor's Record Book, on Page 74, contains a survey made by Jonah Peterman, County Surveyor, in December 1889. Survey mentions that the government corner was found.

Surveyor's Record Book, on Page 76, contains a survey made by John Norgaard, County Surveyor, in 1901. Survey does not mention what was found or set at corner. Corner is shown:

2653 feet from the east quarter corner of Section 19
2649 feet from the north quarter corner of Section 30

Surveyor's Record Book B, on Page 93, contains a survey made by John Norgaard, County Surveyor, in 1901. Survey mentions that a stake, which had been set in government mound by an adjoining landowner about 14 years ago, was found at corner. A 6 inch by 6 inch by 24 inch jasper granite was set to mark this location.

The following information was obtained from the County Highway Engineer's Office:

A section corner tie book shows that corner was assumed in 1958, but does not mention what was set. The following ties are shown to corner:

telephone pole, northwest, 76.1 feet
telephone pole, east-southeast, 170.1 feet
power pole, northeast, 63.9 feet
telephone pole, southeast, 58.9 feet
power pole, northwest, 44.0 feet

The following information was obtained from the D.N.R. Bureau of Engineering Records:

In December 1961, ties for corner were obtained from the County Highway Engineer's Office and a corner position was established from them.

Survey does not mention what was set at corner, but the following ties are shown:

on center line of roads, north-south and east-west
power pole, northeast, 63.9 feet
telephone pole, southeast, 47.2 feet

In June 5, 1984, the DNR Bureau of Engineering traversed to the area of the corner and located the intersection of roads north-south and east-west.

On June 7, 1984, the D.N.R. Bureau of Engineering found a 6 inch by 6 inch cut granite stone down 30 inches at natural ground. Left stone as found and set a ½ inch by 12 inch telephone pole bolt on its east side. Searched for but did not find any previous ties.

Accept the stone as the location of the original government corner.

Traverse information is available from the DNR Bureau of Engineering.