

# CERTIFICATE OF LOCATION OF GOVERNMENT CORNER

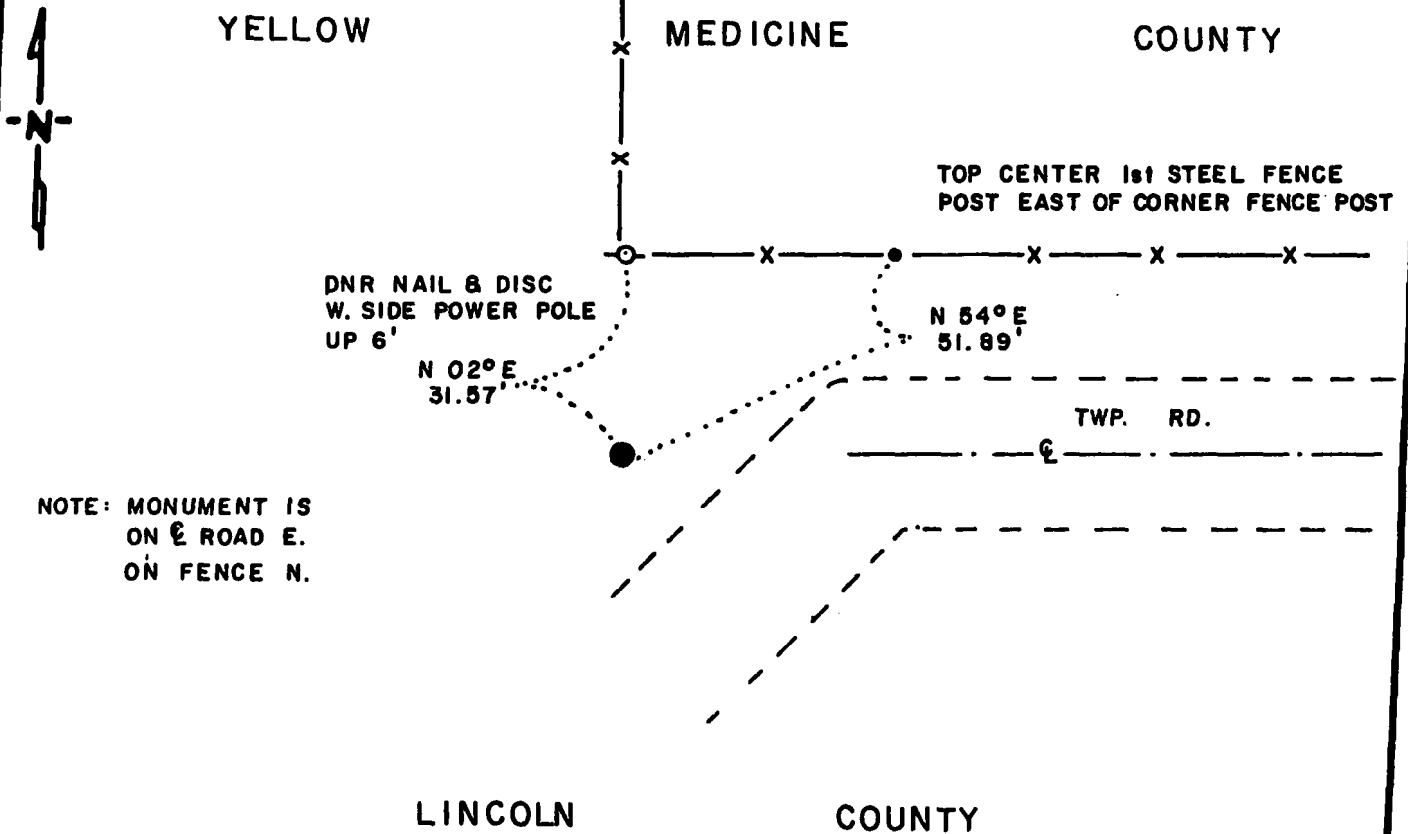
SOUTH QUARTER Corner of Section 31, Township 114 N., Range 45 W., 5<sup>th</sup> P.M.

STATE OF MINNESOTA, County of YELLOW MEDICINE

At the corner location shown on the sketch:

- On 10-9-85 found a 1 1/4" x 12" IRON ROD, DOWN 24" IN CENTER OF 5  
DATE STONES
- left monument as found,  lowered monument,  removed monument (explain)
- On 10-9-85 placed a 1 1/4" x 1 1/4" x 20" PERFORATED STEEL TUBE WITH  
DATE ALUMINUM CAP STAMPED "DNR SURVEY MARKER", DOWN 5" OVER IRON ROD

## SKETCH OF REFERENCE TIES



NOTE: MONUMENT IS ON E ROAD E. ON FENCE N.

### BEARINGS OBSERVED WITH COMPASS

Statement of evidence relative to this corner location is on back of page.

LRP 12-4-85  
G-1193

I hereby certify that this document and the data contained herein was prepared by me or under my direct supervision.

Lowell R. Pomeroy Jr. 4-9-86  
SURVEYOR DATE

Registration No. 17005

- Land Surveyor,  Professional Engineer
- County Surveyor,  County Engineer

### OFFICE OF THE COUNTY RECORDER County of Yellow Medicine

I hereby certify that this document was filed in the Co. Recorder's office at 9:30 A.M. on the 11 day of April A.D., 19 86

County Recorder Norman J. Opdahl

By Kay Nerdahl, Deputy

DOCUMENT NO. 188138



South Quarter Corner Section 31, Township 114 North, Range 45 West

This corner was originally established by the U. S. General Land Office survey in 1858. The government notes show corner marked with a wood post set in mound of earth with pits and trench dug around the mound.

In October 1985, the DNR Bureau of Engineering contacted the following for corner information:

Lincoln County Offices of the Recorder and Highway Engineer  
Yellow Medicine County Offices of the Recorder and Highway Engineer

The following information was obtained from the Yellow Medicine County Recorder's Office:

Surveyor's Record Book, on Page 522, contains a survey by John Norgaard, County Surveyor, dated 1901. Survey shows corner 2824.6 feet from the northwest corner of Section 6. Survey does not indicate what was found or set at the corner.

On October 9, 1985, the DNR Bureau of Engineering hired a backhoe operated by V. C. Johnson of Canby to dig for evidence of this corner. Dug a 3 foot east-west by 6 foot north-south hole. Found a 1½" by 12" iron rod down 24" in the center of 5 stones ranging in size from 4" by 6" by 6" to 6" by 7" by 9", natural ground was encountered down 12". Left everything as found, corner is:

on fence line north, on center line road east  
2654.62 feet from the northeast corner Section 6  
2821.38 feet from the northwest corner Section 6

Accept the iron rod as the location of the corner.

Traverse information is available from the DNR Bureau of Engineering.

259hab/missu4