

# CERTIFICATE OF LOCATION OF GOVERNMENT CORNER

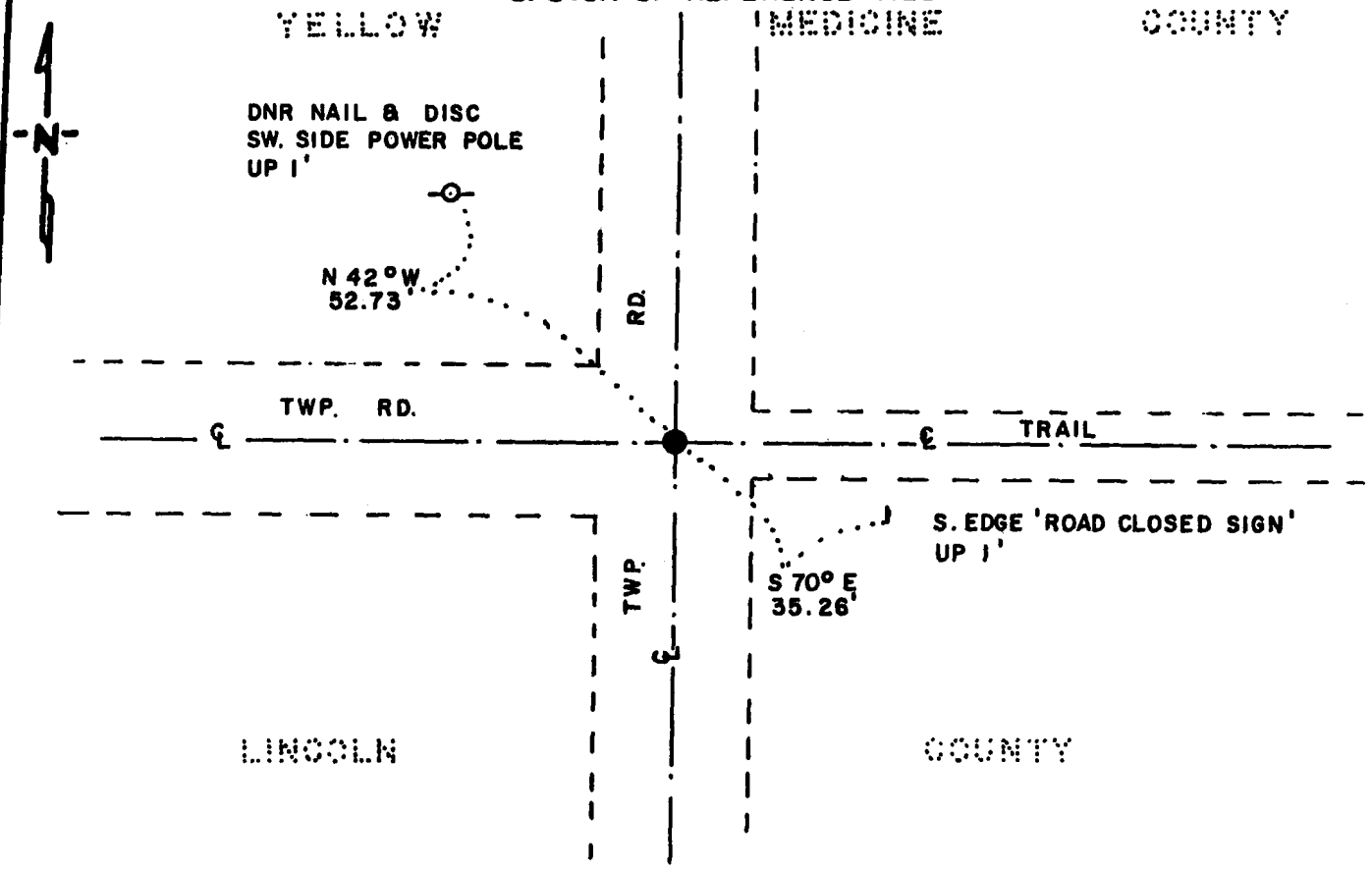
SOUTHEAST Corner of Section 31, Township 114 N., Range 45 W., 5<sup>th</sup> P.M.

STATE OF MINNESOTA, County of YELLOW MEDICINE

At the corner location shown on the sketch:

- On 10-9-85 found a PILE OF 3 STONES, DOWN 29"  
DATE
- left monument as found,  lowered monument,  removed monument (explain)
- On 10-9-85 placed a 1 1/4" x 1 1/4" x 20" PERFORATED STEEL TUBE WITH  
DATE  
ALUMINUM CAP STAMPED "DNR SURVEY MARKER" DOWN 6" OVER MIDDLE STONE

### SKETCH OF REFERENCE TIES



### BEARINGS OBSERVED WITH COMPASS

Statement of evidence relative to this corner location is on back of page.

LRP 12-4-85  
G-1193

I hereby certify that this document and the data contained herein was prepared by me or under my direct supervision.

Laurel R. Pommeroy Jr. 4-9-86  
DATE

Registration No. 17005

- Land Surveyor,  Professional Engineer
- County Surveyor,  County Engineer

OFFICE OF THE COUNTY RECORDER  
County of Yellow Medicine

I hereby certify that this document was filed in the Co. Recorder's office at 9:35 A.M. on the 11 day of April A.D., 1986

County Recorder Norman J. Opdahl

By Kay Nordahl, Deputy

DOCUMENT NO. 188139

RECORDED
GRANTOR
INDEXED

Southeast Corner Section 31, Township 114 North, Range 45 West

This corner was originally established by the U. S. General Land Office survey in 1858. The government notes show corner marked with a wood post set in mound of earth with pits and trench dug around the mound.

In October 1985, the DNR Bureau of Engineering contacted the following for corner information:

Lincoln County Offices of the Recorder and Highway Engineer  
Yellow Medicine County Offices of the Recorder and Highway Engineer

The following information was obtained from the Yellow Medicine County Recorder's Office:

Surveyor's Record Book, on Page 192, contains a collection of what was found at government corners by John Norgaard, County Surveyor, dated September 27, 1901. Norgaard states, "Found stake in the center of road running north and south and on lines of improvements east and west, said by adjoining landowners to be the original government corner." A 6" by 6" by 2 feet jasper granite stone was set 2" above ground at this location.

Surveyor's Record Book, Page 522, contains a survey by John Norgaard, County Surveyor, dated 1929. Corner is a monument 1 foot below ground in center of road running north-south and east. Ties are shown:

telephone pole northwest 40.7 feet  
telephone pole northeast 47 feet  
fence post northeast 41.5 feet  
telephone line running east 25 feet north

The following information was obtained from the Lincoln County Highway Engineer's Office:

A page of the section corner tie book, date not indicated, shows corner as a stone marker.

On October 9, 1985, the DNR Bureau of Engineering hired a backhoe operated by V. C. Johnson of Canby to dig for evidence of this corner. Dug a 6 foot east-west by 10 foot north-south hole. Found a pile of 3 stones middle stone measures 8" by 11" by 11", other stones were 4" by 5" by 6" and 5" by 6" by 7" down 29" at natural ground. Left stones as found and set a railroad spike on south side of middle stone. Searched for, but did not find record ties. Corner is:

on center line north-south road, on centerline road west and center line trail east.

Accept the middle stone as the location of the corner.

Traverse information is available from the DNR Bureau of Engineering.

260hab/missu4