

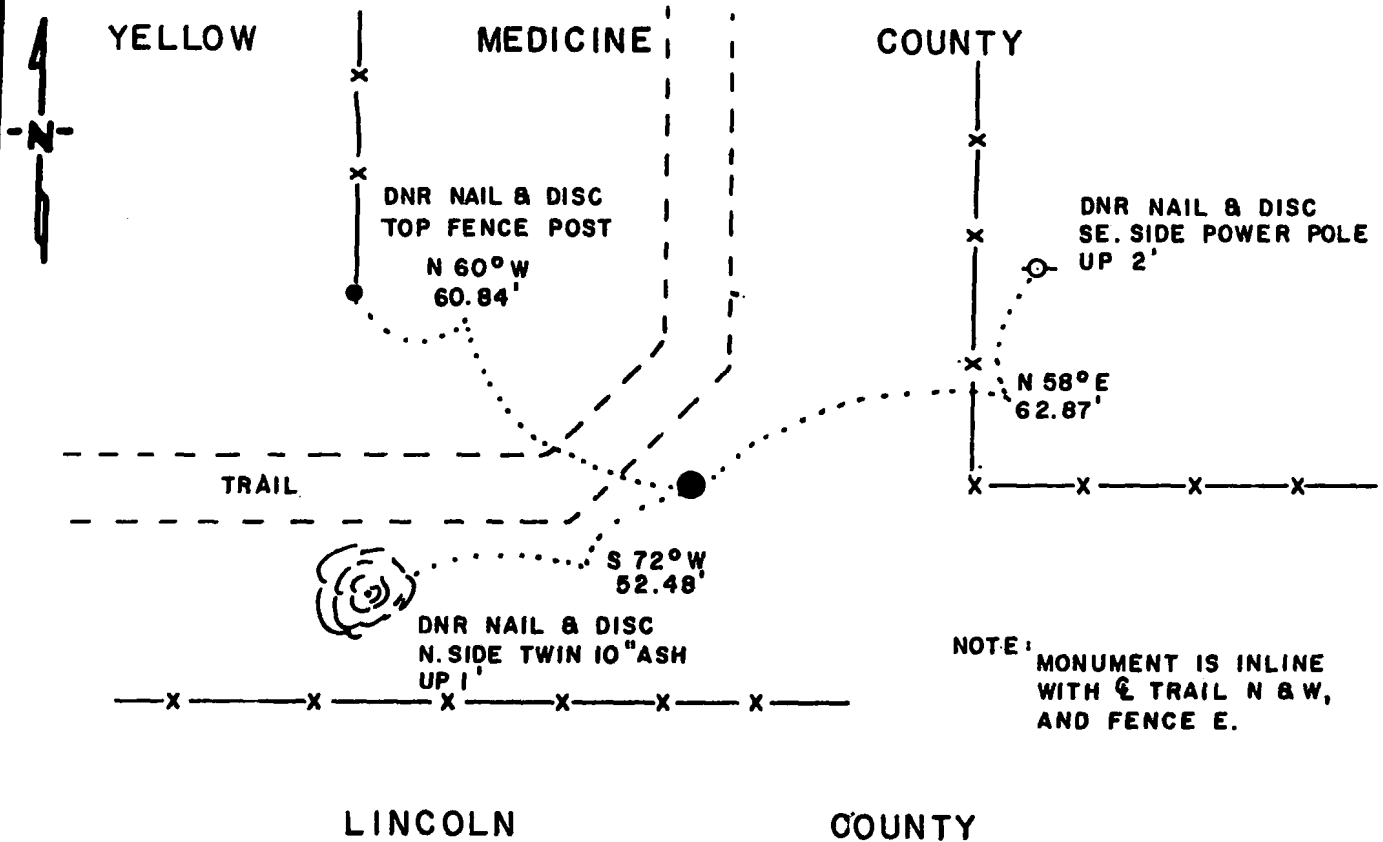
CERTIFICATE OF LOCATION OF GOVERNMENT CORNER

SOUTHEAST Corner of Section 36, Township 114 N., Range 46 W., 5th P.M.
STATE OF MINNESOTA, County of YELLOW MEDICINE

At the corner location shown on the sketch:

- On 10-8-85 DATE found a 6"x6" CAST IRON PLATE, DOWN 2" STAMPED "NE COR
SEC 1 T113 R 46"
- left monument as found, lowered monument, removed monument (explain)
- On DATE placed a

SKETCH OF REFERENCE TIES



NOTE: MONUMENT IS IN LINE WITH $\frac{1}{2}$ TRAIL N & W, AND FENCE E.

BEARINGS OBSERVED WITH COMPASS

Statement of evidence relative to this corner location is on back of page.

LRP 12-4-85
G-1193

I hereby certify that this document and the data contained herein was prepared by me or under my direct supervision.

Lowell R. Pomeroy SIGNATURE 4-9-86 DATE

Registration No. 17005

- Land Surveyor, Professional Engineer
- County Surveyor, County Engineer

OFFICE OF THE COUNTY RECORDER
County of Yellow Medicine

I hereby certify that this document was filed in the Co. Recorders office at 9:40 A.M. on the 11 day of April A.D., 19 86

County Recorder Norman J. Opdahl

By Kay Nersahl, Deputy

DOCUMENT NO. 188140



Southeast Corner Section 36, Township 114 North, Range 46 West

This corner was originally established by the U. S. General Land Office survey in 1858. The government notes show corner marked with a wood post set in mound of earth with pits and trench dug around the mound.

In October 1985, the DNR Bureau of Engineering contacted the following for corner information:

Lincoln County Offices of the Recorder and Highway Engineer
Yellow Medicine County Offices of the Recorder and Highway Engineer

The following information was obtained from the Yellow Medicine County Recorder's Office:

Surveyor's Record Book, Page 155, contains statements concerning township corners by John Norgaard, County Surveyor, dated 1897. This corner is a found iron monument 6" by 6" on top marked:
"NE S 1, T 113, R 46," even with ground.

Surveyor's Record Book, on Page 522, contains a survey by John Norgaard, County Surveyor, dated 1901. Survey shows corner 2824.6 feet from the north quarter corner of Section 6. Survey does not indicate what was found or set at the corner.

The following information was obtained from the Lincoln County Recorder's Office:

Surveyor's Record Book 1, Page 143, contains a survey by John B. Chase, County Surveyor, dated June 5, 1902. Chase found the old government stake and pits, also the iron stake set by Charlie Metcalf.

Surveyor's Record Book 2, Page 12, contains a road survey by Elmer Keeler, County Surveyor, dated June 3, 1907. Keeler found the iron stake set to mark the corner. Survey was for a township line road.

The following information was obtained from the Yellow Medicine County Highway Engineer's Office:

A page of the section corner tie book, date not indicated, shows corner as an iron plate inplace with ties:
corner fence post southeast 44.4 feet
fence post southwest 46.4 feet
second fence post east 48.2 feet

In October 1985, the DNR Bureau of Engineering traversed to the area of the corner and found a 6" by 6" cast iron plate monument down 2" stamped "NE Cor Sec 1, T 113, R 46". Corner is on center line trails north and west and on fence east. Searched for but did not find any record ties.

Accept the found cast iron plate as the location of the corner.

Traverse information is available from the DNR Bureau of Engineering.

258hab/missu4