

CERTIFICATE OF LOCATION OF GOVERNMENT CORNER

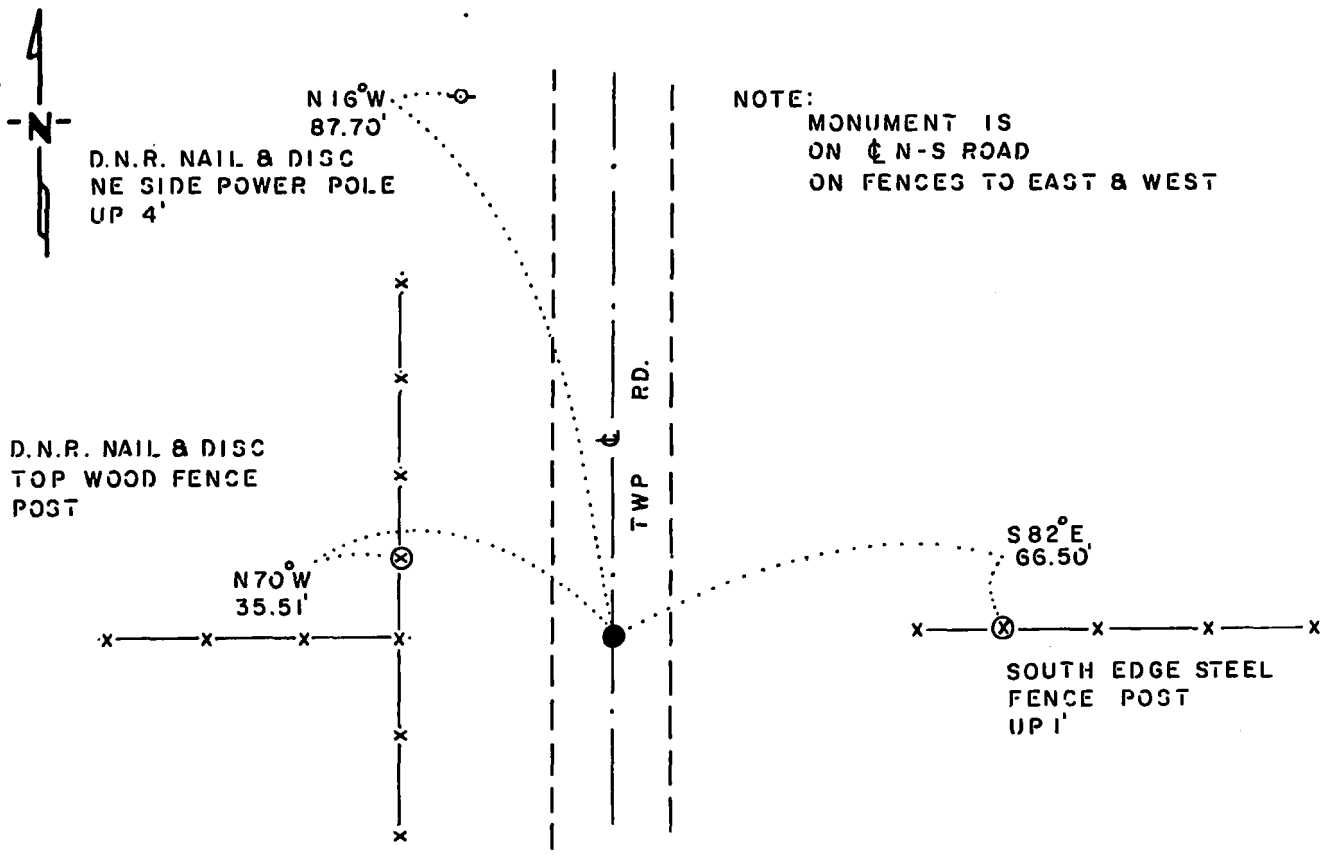
EAST QUARTER Corner of Section 19, Township 114 N., Range 43 W, 5th P.M.

STATE OF MINNESOTA, County of YELLOW MEDICINE

At the corner location shown on the sketch:

- On _____ found a _____
DATE
- left monument as found, lowered monument, removed monument (explain)
- On 11-20-85 placed a 1 1/4" x 1 1/4" x 20" PERFORATED STEEL TUBE WITH
DATE
ALUMINUM CAP STAMPED "D.N.R. SURVEY MARKER", DOWN 0.2'

SKETCH OF REFERENCE TIES



NOTE:
 MONUMENT IS
 ON ϕ N-S ROAD
 ON FENCES TO EAST & WEST

BEARINGS OBSERVED WITH COMPASS

Statement of evidence relative to this corner location is on back of page.

J. B. M. 1-28-86
G-651

I hereby certify that this document and the data contained herein was prepared by me or under my direct supervision.

Bruce W. Sheppard 4-28-86
SIGNATURE DATE

Registration No. 17003

Land Surveyor, Professional Engineer

County Surveyor, County Engineer

OFFICE OF THE COUNTY RECORDER
County of Yellow Medicine

I hereby certify that this document was filed in the Co. Recorders office at 9:10 A.M. on the 1 day of May A.D., 19 86

County Recorder Norman J. Opdahl

By Kay Nordahl, Deputy
DOCUMENT NO. 188272

RECORDED
 GRANTED
 GRANTEE
 INDEXED

East Quarter Corner Section 19, Township 114 North, Range 43 West

This corner was originally established by the U. S. General Land Office survey in 1867. The government notes show:

set quarter post in mound with charred stake and pits

In June 1983, the DNR Bureau of Engineering contacted the Yellow Medicine County Offices of the Recorder and Highway Engineer for corner information.

The following information was obtained from the Recorder's Office:

Surveyor's Plat Book on Page 190 contains a survey by John Norgaard, County Surveyor, in 1905. Survey states "found stone in the government mound."

The following information was obtained from the DNR Bureau of Engineering's Records:

In 1969, corner was established in line with fences east and west, and on a line from the northeast corner of Section 19 to the southeast corner of Section 19. Survey does not indicate what was set to mark corner. The corner is shown:

2664.00 feet from the northeast corner of Section 19
2646.38 feet from the southeast corner of Section 19

On July 5, 1983, the DNR Bureau of Engineering traversed to the area of the corner and located the center line of a north-south road and fences east and west.

On June 29, 1983, the DNR Bureau of Engineering hired a backhoe operated by Larry Giese, of Porter to dig for evidence of this corner. Dug a hole 12 feet north-south by 8 feet east-west by 18 inches deep the center being on the center line of north-south road and fences east and west. Natural ground was encountered down 9 inches. No monument was found.

Then a temporary point was set on the center line of north-south road in line with fences east and west and was found to be:

2664.55 feet from the northeast corner of Section 19
2647.00 feet from the southeast corner of Section 19
4.87 feet east of a line between adjoining section corners

Accept the temporary point as the location of the corner.

Traverse information is available from the DNR Bureau of Engineering.

283hab/missul