

CERTIFICATE OF LOCATION OF GOVERNMENT CORNER

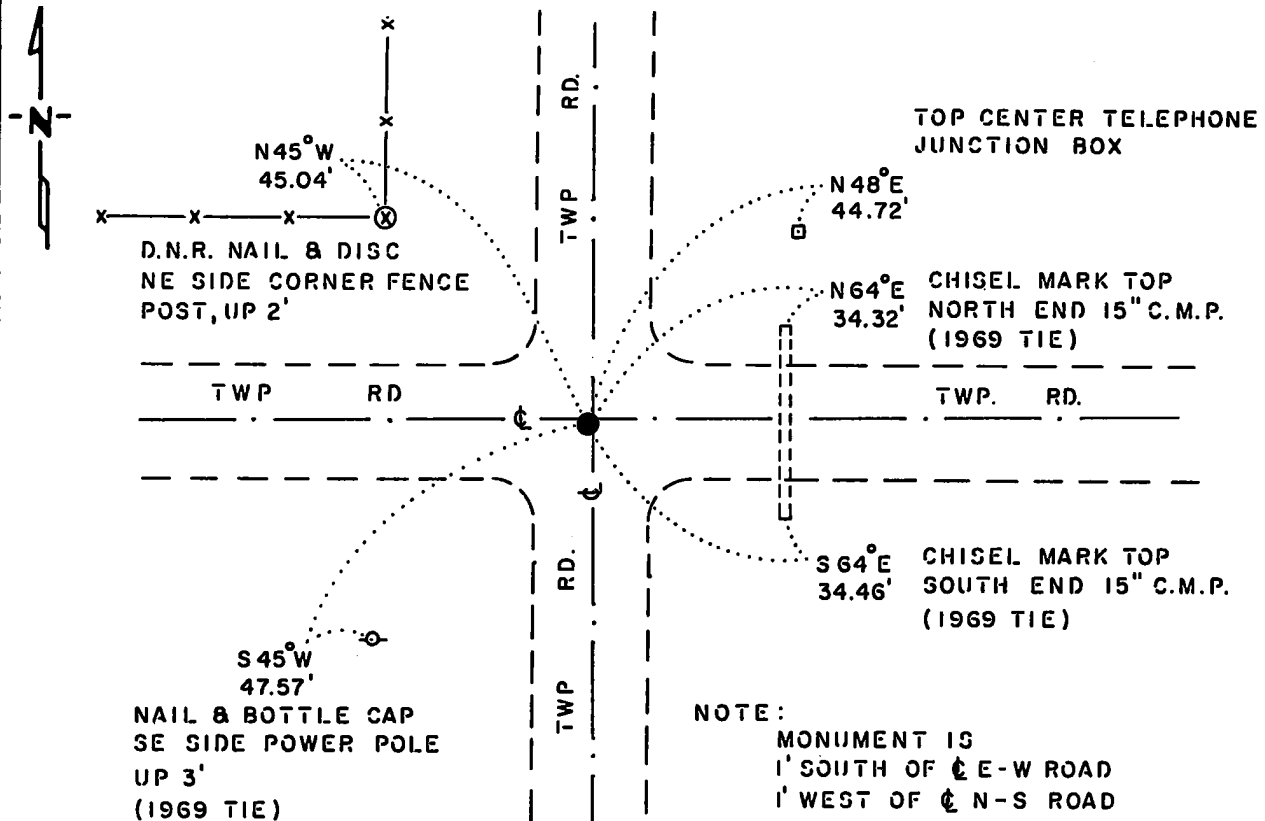
NORTHEAST Corner of Section 19, Township 114 N., Range 43 W., 5th P.M.

STATE OF MINNESOTA, County of YELLOW MEDICINE

At the corner location shown on the sketch:

- On 6-21-83 found a 6"x6" CUT GRANITE STONE, DOWN 18"
DATE
- left monument as found, lowered monument, removed monument (explain)
- On 6-21-83 placed a 1 1/4"x 1 1/4"x 15" PERFORATED STEEL TUBE WITH
DATE
ALUMINUM CAP STAMPED "D.N.R. SURVEY MARKER," OVER STONE, DOWN 3"

SKETCH OF REFERENCE TIES



BEARINGS OBSERVED WITH COMPASS

Statement of evidence relative to this corner location is on back of page.

J. B. M. 1-28-86
G-651

I hereby certify that this document and the data contained herein was prepared by me or under my direct supervision.

Bruce W. Shepard 4-28-86
SIGNATURE DATE

Registration No. 17003

- Land Surveyor, Professional Engineer
- County Surveyor, County Engineer

OFFICE OF THE COUNTY RECORDER
County of Yellow Medicine

I hereby certify that this document was filed in the Co. Recorders office at 9:15 A.M. on the 1 day of May A.D., 19 86

County Recorder Norman J. Ogdahl

By Kay Nordahl Deputy

DOCUMENT NO. 188273

GRANTED
GRANTEE
INDEXED

Northeast Corner Section 19, Township 114 North, Range 43 West

This corner was originally established by the U. S. General Land Office survey in 1867. The government notes show:
set section post in mound with charred stake and pits

In June 1983, the DNR Bureau of Engineering contacted the Yellow Medicine County Offices of the Recorder and Highway Engineer for corner information.

The following information was obtained from the Recorder's Office:
Surveyor's Book B, introductory page and Page 179 contain a survey by John Norgaard, County Surveyor, in 1901. Survey states "found stake in the government mound, set top of a 6" by 6" by 24" jasper granite level with ground."

The following information was obtained from the DNR Bureau of Engineering's Records:

In 1969, a 6" by 6" chiseled granite stone was found at corner, 1.8 feet below the road surface. The following ties were taken to the corner:

filed nick top center south end 15" CMC, east-southeast,
34.62 feet
filed nick top center north end 15" CMC, east-northeast,
34.35 feet
nail and bottle cap northwest side telephone pole, northeast,
45.68 feet
nail and bottle cap east side mailbox post, south-southeast,
44.50 feet
nail and bottle cap southeast side power pole, southwest,
47.49 feet

On June 21, 1983, the DNR Bureau of Engineering traversed to the area of the corner and found a 6" by 6" cut granite stone down 18 inches. Searched for and found record ties as shown on the sketch of ties.

Accept the granite stone as the location of the corner.

Traverse information is available from the DNR Bureau of Engineering.

282hab/missul