

# CERTIFICATE OF LOCATION OF GOVERNMENT CORNER

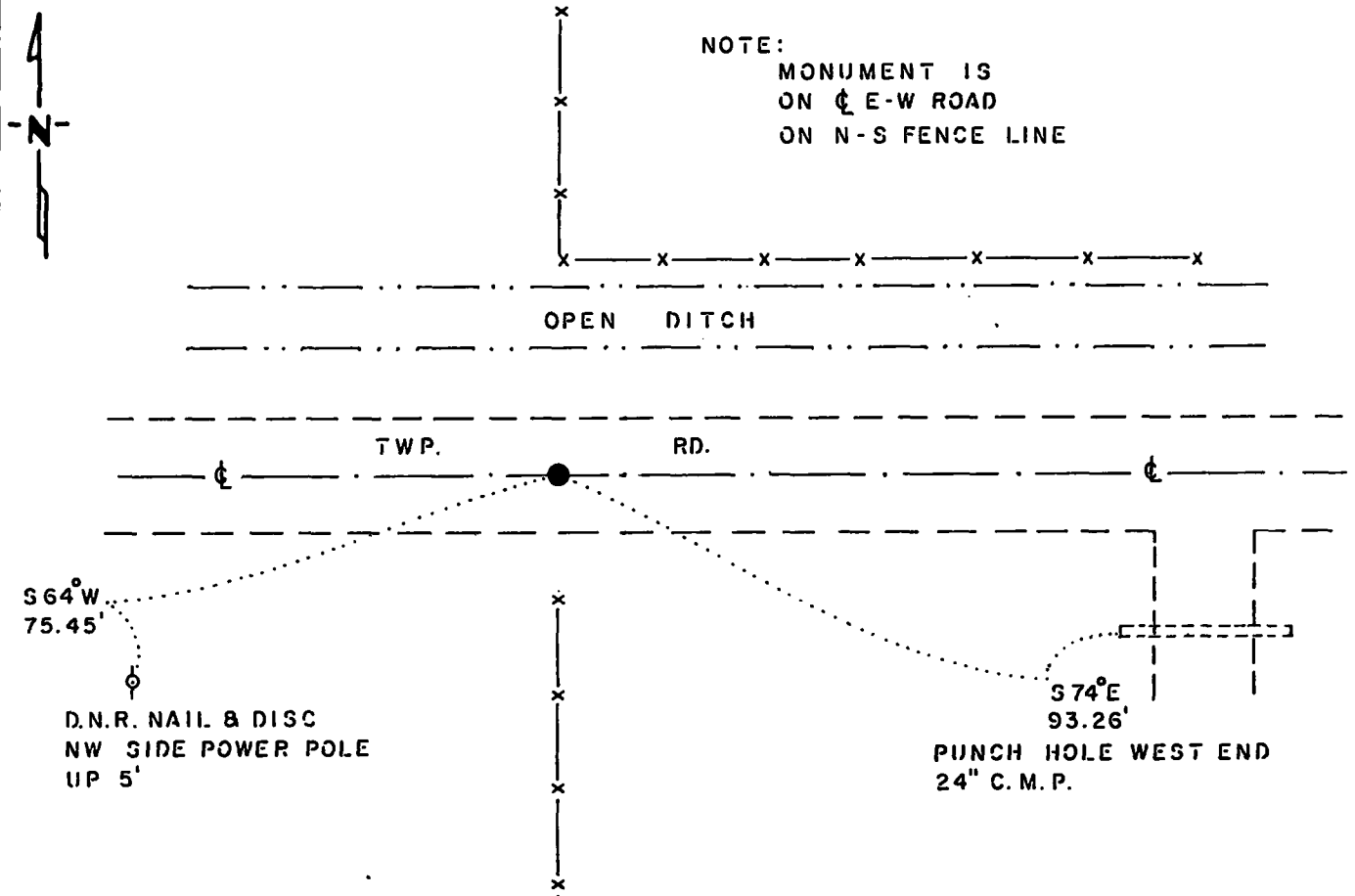
NORTH QUARTER Corner of Section 19, Township 114 N., Range 43 W., 5<sup>th</sup> P.M.

STATE OF MINNESOTA, County of YELLOW MEDICINE

At the corner location shown on the sketch:

- On \_\_\_\_\_ found a \_\_\_\_\_  
DATE
- left monument as found,  lowered monument,  removed monument (explain)
- On 11-20-85 placed a 1 1/4" x 1 1/4" x 20" PERFORATED STEEL TUBE WITH  
DATE  
ALUMINUM CAP STAMPED "D.N.R. SURVEY MARKER", DOWN 0.3'

### SKETCH OF REFERENCE TIES



BEARINGS OBSERVED WITH COMPASS

Statement of evidence relative to this corner location is on back of page.

J. B. M. 1-28-86  
G-651

I hereby certify that this document and the data contained herein was prepared by me or under my direct supervision.

Bruce W. Shepard 4-28-86  
SIGNATURE DATE

Registration No. 17003

- Land Surveyor,  Professional Engineer
- County Surveyor,  County Engineer

### OFFICE OF THE COUNTY RECORDER

County of Yellow Medicine

I hereby certify that this document was filed in the Co. Recorders office at 9:20 A.M. on the 1 day of May A.D., 19 86

County Recorder Norman J. Opdahl

By Kay Nordahl, Deputy

DOCUMENT NO. 188274

RECORDED  
GRANTED  
GRANTEE  
INDEXED

North Quarter Corner Section 19, Township 114 North, Range 43 West

This corner was originally established by the U. S. General Land Office survey in 1867. The government notes show:  
set quarter post in mound with charred stake and pits

In June 1983, the DNR Bureau of Engineering contacted the Yellow Medicine County Offices of the Recorder and Highway Engineer for corner information.

The following information was obtained from the Recorder's Office:  
Surveyor's Plat Book, Pages 190 and 191 contain a survey by John Norgaard, County Surveyor, in 1905. Survey states "found stone in the government mound." The corner is shown:  
2612 feet from the northwest corner of Section 19

The following information was obtained from the Highway Engineer's Office:  
Section Corner Book, date not indicate, shows corner but does not state what was found or set. The following ties are shown to corner:  
third fence post, east-northeast, 65.8 feet  
corner fence post, southeast, 42.2 feet  
second fence post, east-southeast, 71.8 feet

The following information was obtained from the DNR Bureau of Engineering's Records:

In 1969, corner was established in line with fences north and south, and on a line from the northeast corner of Section 19 to the northwest corner of Section 19. Survey does not indicate what was set to mark corner. The corner is shown:  
2646.50 feet from the northeast corner of Section 19  
2614.12 feet from the northwest corner of Section 19

On July 5, 1983, the DNR Bureau of Engineering traversed to the area of the corner and located the center line of an east-west road and fences north and south. Searched for but did not find any record ties.

On June 29, 1983, the DNR Bureau of Engineering hired a backhoe operated by Larry Giese, of Porter to dig for evidence of this corner. Dug a hole 12 feet north-south by 10 feet east-west by 18 inches deep the center being on the center line of east-west road and fences north and south. Natural ground was encountered down 4 inches. No monument was found.

Then a temporary point was set on the center line of east-west road in line with fences north and south. This point was found to be:  
2647.03 feet from the northeast corner of Section 19  
2614.20 feet from the northwest corner of Section 19  
17.56 feet north of a line between adjoining section corners

Accept the temporary point as the location of the corner.

Traverse information is available from the DNR Bureau of Engineering.

281hab/missul