

# CERTIFICATE OF LOCATION OF GOVERNMENT CORNER

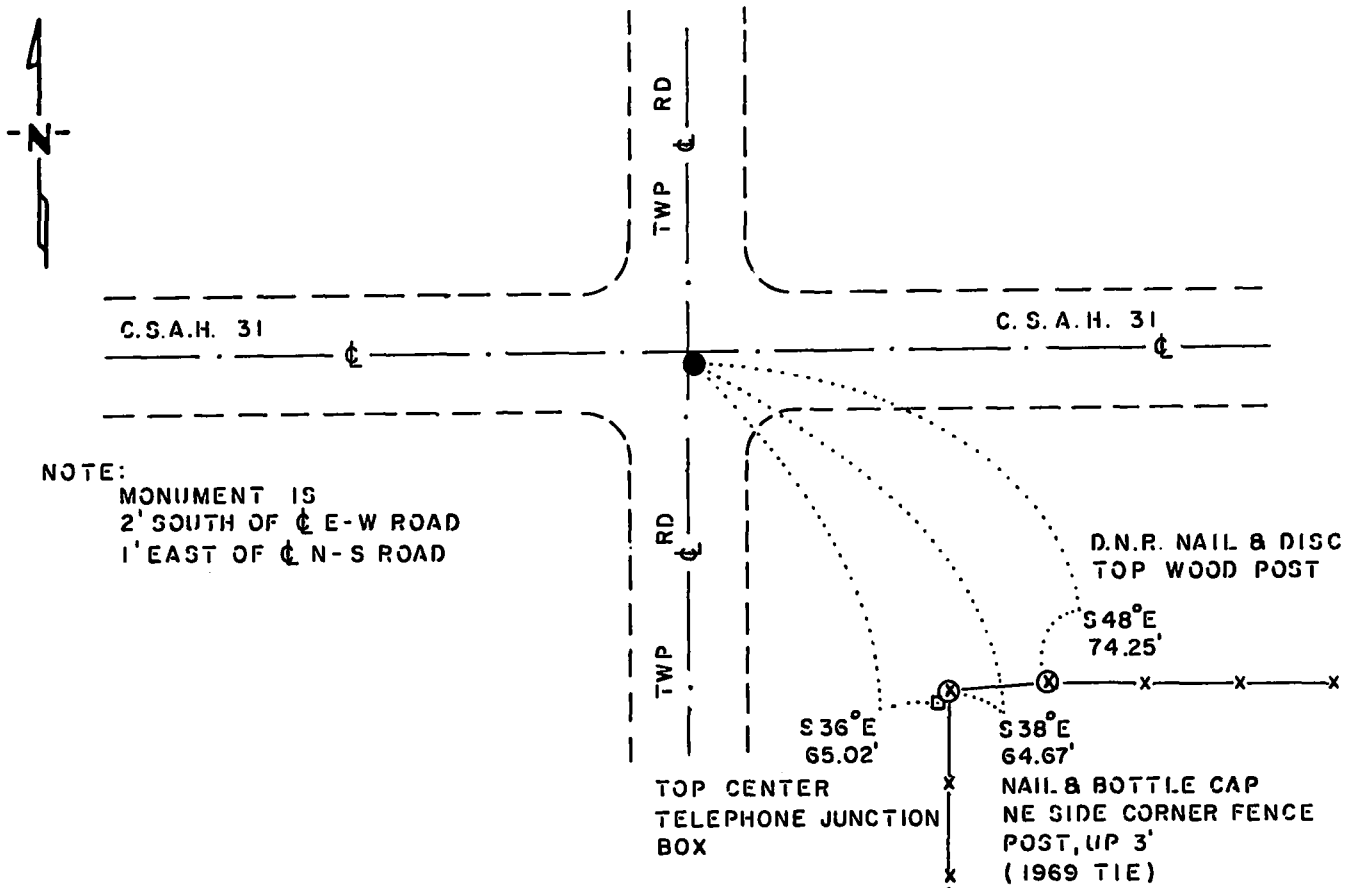
NORTHEAST Corner of Section 30, Township 114 N., Range 43 W., 5<sup>th</sup> P.M.

STATE OF MINNESOTA, County of YELLOW MEDICINE

At the corner location shown on the sketch:

- On 6-21-83 found a 6"x6" CUT GRANITE STONE, DOWN 24"  
DATE
- left monument as found,  lowered monument,  removed monument (explain)
- On 6-21-83 placed a 1 1/4"x1 1/4"x 20" PERFORATED STEEL TUBE WITH  
DATE  
ALUMINUM CAP STAMPED "D.N.R. SURVEY MARKER", OVER STONE, DOWN 4"

### SKETCH OF REFERENCE TIES



NOTE:  
 MONUMENT IS  
 2' SOUTH OF  $\epsilon$  E-W ROAD  
 1' EAST OF  $\epsilon$  N-S ROAD

### BEARINGS OBSERVED WITH COMPASS

Statement of evidence relative to this corner location is on back of page.

J.B.M. 9-16-83  
G-651

I hereby certify that this document and the data contained herein was prepared by me or under my direct supervision.

Bruce W. Shappell 4-28-86  
SIGNATURE DATE

Registration No. 17003

- Land Surveyor,  Professional Engineer
- County Surveyor,  County Engineer

OFFICE OF THE COUNTY RECORDER  
County of Yellow Medicine

I hereby certify that this document was filed in the Co. Recorders office at 9:30 A.M. on the 1 day of May A.D., 1986

County Recorder Norman J. Opdahl

By Kay Nordahl, Deputy  
DOCUMENT NO. 188276



Northeast Corner Section 30, Township 114 North, Range 43 West

This corner was originally established by the U. S. General Land Office survey in 1867. The government notes show:

set section post in mound with charred stake and pits

In June 1983, the DNR Bureau of Engineering contacted the Yellow Medicine County Offices of the Recorder and Highway Engineer for corner information.

The following information was obtained from the Recorder's Office:

Surveyor's Book B, introductory page, Page 37 and Page 180 contain a survey by John Norgaard, County Surveyor, in 1901. Survey shows that a 6" by 6" by 24" jasper granite was set at corner:

2644 feet from the east quarter corner of Section 30  
2644 feet from the east quarter corner of Section 19  
in the center of a north-south road

The following information was obtained from the Highway Engineer's Office:

Section Corner Book, date not indicated, shows corner but does not state what was found or set. The following ties are shown to corner:

third fence post, northwest, 68.0 feet  
second fence post, southwest, 55.3 feet  
third fence post, southeast, 64.2 feet

Section Corner Book, dated April 1, 1957, shows that an iron pin was set for an assumed corner and the following ties were taken:

power pole, northwest, 45.0 feet  
fence post, southwest, 82.3 feet  
power pole, southeast, 43.4 feet

Section Corner Book, dated October 28, 1965, shows that a granite monument was found at corner 30 inches below the road surface. The following ties are shown to corner:

power pole, northwest, 45.70 feet  
power pole, southeast, 42.95 feet  
corner fence post, northeast, 51.15 feet  
spike in road, north, 100.0 feet

The following information was obtained from the DNR Bureau of Engineering's Records:

In 1969, a 6" by 6" chiseled stone was found at corner, 2.0 feet below the road surface. The following ties were taken to the corner:

nail and bottle cap top first fence post north, north-northeast, 69.3 feet  
nail and bottle cap top east gatepost, northeast, 82.53 feet  
nail and bottle cap northeast side corner fence post, southeast, 64.50 feet

On June 21, 1983, the DNR Bureau of Engineering traversed to the area of the corner and found a 6" by 6" cut granite stone down 24 inches. Searched for and found record ties as shown on sketch of ties. The granite stone was found to be:

2647.00 feet from the east quarter corner of Section 19

Accept the granite stone as the location of the corner.

Traverse information is available from the DNR Bureau of Engineering.