

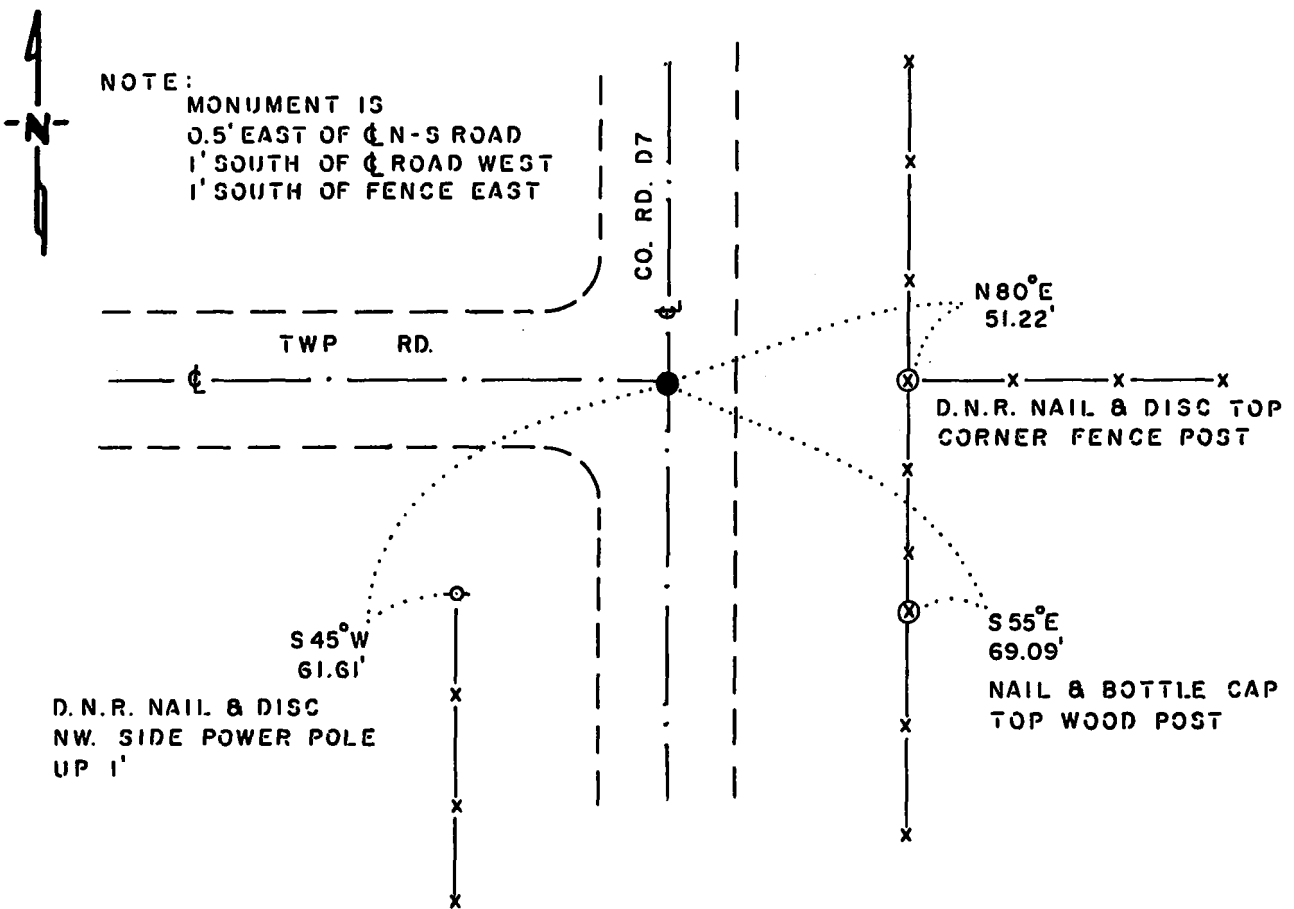
# CERTIFICATE OF LOCATION OF GOVERNMENT CORNER

**NORTHEAST** Corner of Section 23, Township 114 N., Range 44 W., 5th. P.M.  
 STATE OF MINNESOTA, County of YELLOW MEDICINE

At the corner location shown on the sketch:

- On 4-7-86 found a 10" x 10" x 11" FIELD STONE, DOWN 26"  
DATE
- left monument as found,  lowered monument,  removed monument (explain)
- On 4-7-86 placed a 1 1/4" x 1 1/4" x 20" PERFORATED STEEL TUBE WITH  
DATE  
ALUMINUM CAP STAMPED "D.N.R. SURVEY MARKER" OVER STONE, DOWN 0.4'

## SKETCH OF REFERENCE TIES



### BEARINGS OBSERVED WITH COMPASS

Statement of evidence relative to this corner location is on back of page.

J.B.M. 4-14-86  
 8-681

I hereby certify that this document and the data contained herein was prepared by me or under my direct supervision.

Bruce W. Sheppard 4-28-86  
DATE

Registration No. 17003

- Land Surveyor,  Professional Engineer
- County Surveyor,  County Engineer

**OFFICE OF THE COUNTY RECORDER**  
 County of Yellow Medicine

I hereby certify that this document was filed in the Co. Recorders office at 9:35 AM. on the 1 day of May A.D., 1986

County Recorder Norman J. Opdahl

By Kay Nordahl, Deputy

DOCUMENT NO. 188277

RECORDED  
 GRANTOR ✓  
 GRANTEE ✓  
 INDEXED ✓

Northeast Corner Section 23, Township 114 North, Range 44 West

This corner was originally established by the U. S. General Land Office survey in 1871. The government notes show:

set post and raised mound as per instructions

In June 1983, the DNR Bureau of Engineering contacted the Yellow Medicine County Offices of the Recorder and Highway Engineer for corner information.

The following information was obtained from the Recorder's Office:

Surveyor's Record B, introductory page and Page 187 contain a survey by John Norgaard, County Surveyor, in 1901. Survey states that a stake was found in the government mound and a 6" by 6" by 24" jasper granite was set 3 inches above the ground in its place.

Surveyor's Plat Book on Page 184 contains a survey by John Norgaard, County Surveyor, in 1904. Survey shows corner but does not indicate what was found or set. The corner is shown:

2693 feet from the north quarter corner of Section 24

2640 feet from the east quarter corner of Section 14

Surveyor's Plat Book on Page 376 contains a survey by John Norgaard, County Surveyor, in 1916. Survey shows corner but does not indicate what was found or set. The corner is shown:

2635 feet from the north quarter corner of Section 24

The following information was obtained from the Highway Engineer's Office: Section Corner Book, date not indicate, shows corner but does not state what was found or set. The following ties are shown to corner:

third fence post, southwest, 79.5 feet

third fence post, east, 46.7 feet

fence post, west-southwest, 85.9 feet

corner fence post, northwest, 69.9 feet

guard rail, north, 29.9 feet

third fence post, northwest, 77.9 feet

corner of bridge post, southeast, 38.8 feet

corner of bridge post, southwest, 39.3 feet

fence post, south-southwest, 64.0 feet

fence post, south-southeast, 80.8 feet

Section Corner Book, dated 1961, shows that a monument was found at corner 1.5 feet below the road surface. The following ties are shown to corner:

fence post, northwest, 58.0 feet

power pole, southwest, 62.0 feet

fence post, southeast, 69.7 feet

On April 7, 1986, the DNR Bureau of Engineering traversed to the area of the corner and found a bridge spike down 0.5 of a foot over a 10" by 1)" by 11" field stone down 26 inches at natural ground. Searched for and found record ties as shown on sketch of ties. The field stone was found to be:

2640.94 feet from the north quarter corner of Section 24

Accept the field stone as the location of the corner. Discarded the bridge spike.

Traverse information is available from the DNR Bureau of Engineering.  
290hab/missul