

# CERTIFICATE OF LOCATION OF GOVERNMENT CORNER

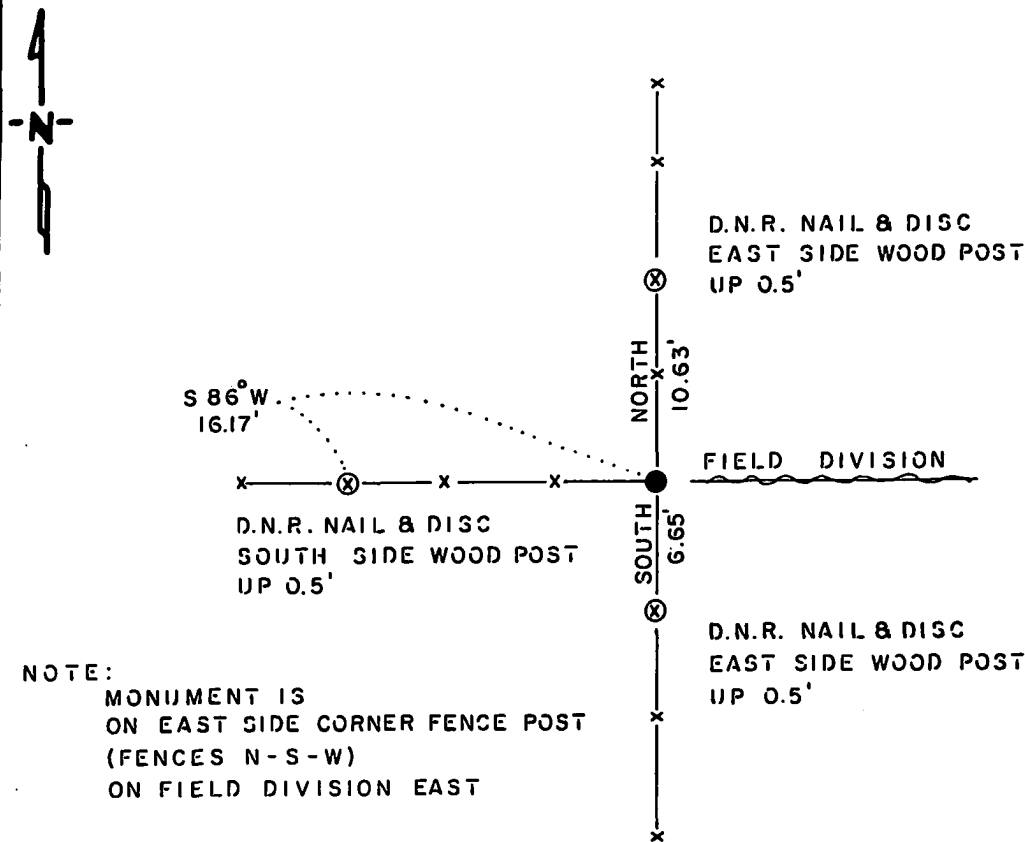
NORTH QUARTER Corner of Section 24, Township 114 N., Range 44 W., 5th. P.M.

STATE OF MINNESOTA, County of YELLOW MEDICINE

At the corner location shown on the sketch:

- On \_\_\_\_\_ found a \_\_\_\_\_  
DATE
- left monument as found,  lowered monument,  removed monument (explain)
- On 4-7-86 placed a 1 1/4" x 1 1/4" x 20" PERFORATED STEEL TUBE WITH  
DATE  
ALUMINUM CAP STAMPED "D.N.R. SURVEY MARKER", UP 0.1'

### SKETCH OF REFERENCE TIES



NOTE:  
MONUMENT IS  
ON EAST SIDE CORNER FENCE POST  
(FENCES N-S-W)  
ON FIELD DIVISION EAST

### BEARINGS OBSERVED WITH COMPASS

Statement of evidence relative to this corner location is on back of page.

J. B. M. 4-15-86  
G-651

I hereby certify that this document and the data contained herein was prepared by me or under my direct supervision.

Russell W. Sheppard 4-28-86  
DATE  
Registration No. 17003  
 Land Surveyor,  Professional Engineer  
 County Surveyor,  County Engineer

OFFICE OF THE COUNTY RECORDER  
County of Yellow Medicine

I hereby certify that this document was filed in the Co. Recorders office at 9:40 A.M. on the 1 day of May A.D., 1986  
County Recorder Norman J. Opdahl  
By Kay Nordahl, Deputy  
DOCUMENT NO. 188278

RECORDED  
GRANTED  
APR 11 1986

North Quarter Corner Section 24, Township 114 North, Range 44 West

This corner was originally established by the U. S. General Land Office survey in 1871. The government notes show:

set post and raised mound as per instructions

In June 1983, the DNR Bureau of Engineering contacted the Yellow Medicine County Offices of the Recorder and Highway Engineer for corner information.

The following information was obtained from the Recorder's Office:

Surveyor's Plat Book, on Page 184 contains a survey by John Norgaard, County Surveyor, in 1904. Survey shows that corner was established on line and proportionately between section corners. An iron bolt was set to mark corner. The corner is shown:

2642.5 feet from the northeast corner of Section 24

2693 feet from the northwest corner of Section 24

Surveyor's Plat Book, on Page 225 contains a survey by John Norgaard, County Surveyor, in 1910. Survey states that a stake was found at corner which was approved by Norgaard 11 years ago. No other information is given about corner.

Surveyor's Plat Book, on Page 376 contains a survey by John Norgaard, County Surveyor, in 1916. Survey states "used fence lines running north and south as now set several years ago where I found government corner." The corner is shown:

2622 feet from the northeast corner of Section 24

2635 feet from the northwest corner of Section 24

On July 6, 1983, the DNR Bureau of Engineering traversed to the area of the corner and set a temporary point next to a corner fence post with fences north, south and west and a field division east. Scanned the area with an electronic metal locator but no metal attraction was obtained. Also, searched the area for a stone monument and again found nothing. The temporary point was found to be:

2623.17 feet from the northeast corner of Section 24

2640.94 feet from the northwest corner of Section 24

1.83 feet south and 8.85 feet east of the lost position

Accept the temporary point as the location of the corner.

Traverse information is available from the DNR Bureau of Engineering.

278hab/missul