

CERTIFICATE OF LOCATION OF GOVERNMENT CORNER

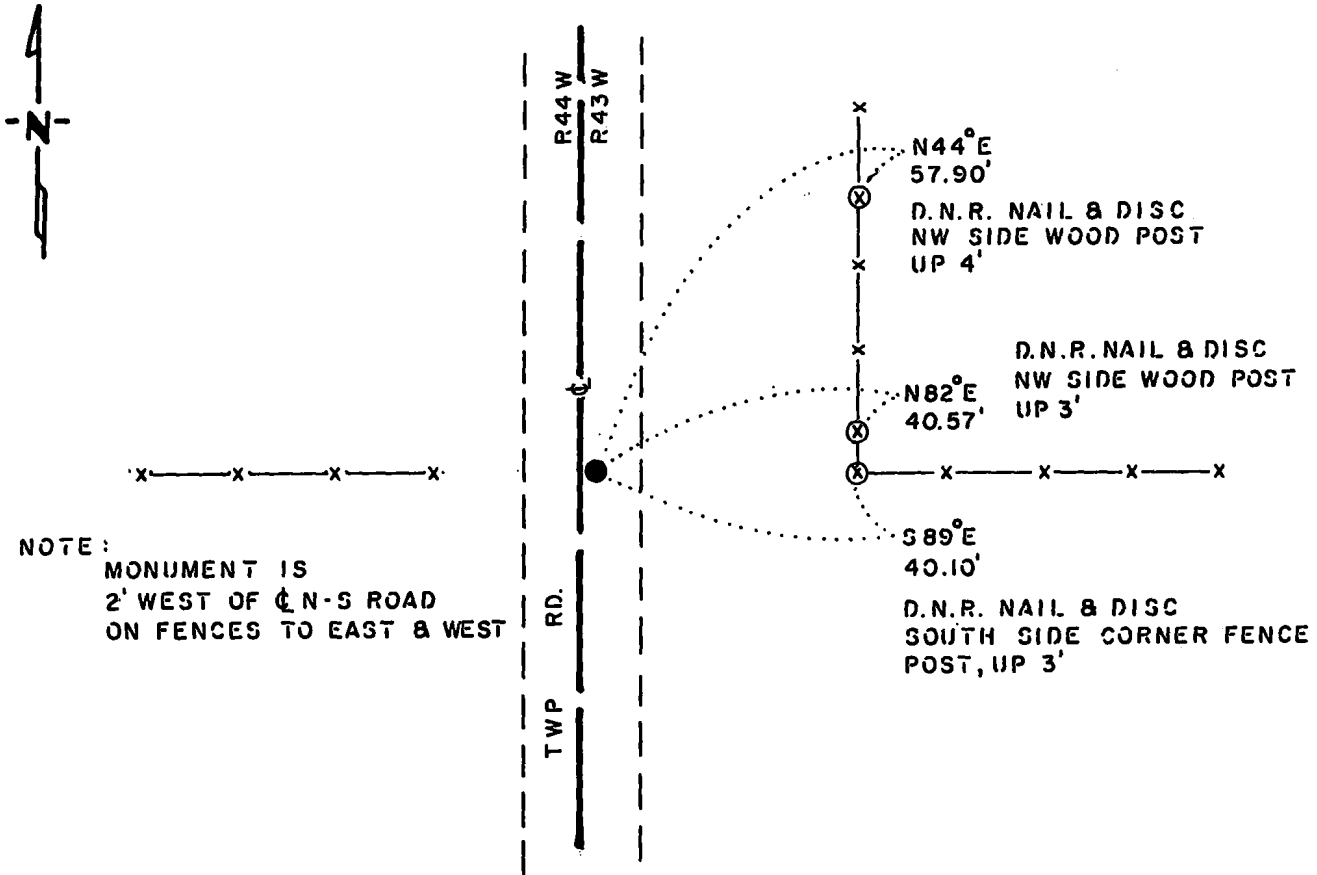
EAST QUARTER Corner of Section 24, Township 114 N., Range 44 W., 5th P.M.

STATE OF MINNESOTA, County of YELLOW MEDICINE

At the corner location shown on the sketch:

- On 6-30-83 found a 6"x11"x14" FIELD STONE WITH PIECES OF 1"x4" WOOD BESIDE STONE, DOWN 17"
DATE
 - left monument as found, lowered monument, removed monument (explain)
- On 6-30-83 placed a 1 1/4"x 1 1/4"x 12" PERFORATED STEEL TUBE WITH ALUMINIUM CAP STAMPED "D.N.R. SURVEY MARKER", OVER STONE
DATE

SKETCH OF REFERENCE TIES



NOTE:
 MONUMENT IS
 2' WEST OF C N-S ROAD
 ON FENCES TO EAST & WEST

BEARINGS OBSERVED WITH COMPASS

Statement of evidence relative to this corner location is on back of page.

J.B.M. 1-28-86
 6-651

I hereby certify that this document and the data contained herein was prepared by me or under my direct supervision.

Bruce W. Sheppard 4-28-86
SIGNATURE DATE

Registration No. 17003

- Land Surveyor, Professional Engineer
- County Surveyor, County Engineer

OFFICE OF THE COUNTY RECORDER

County of Yellow Medicine

I hereby certify that this document was filed in the Co. Recorders office at 9:50 A.M. on the 1 day of May A.D., 19 86

County Recorder Norman J. Opdahl

By May Nordahl, Deputy

DOCUMENT NO. 188280



East Quarter Corner Section 24, Township 114 North, Range 44 West

This corner was originally established by the U. S. General Land Office survey in 1858. The government notes show:

set post, deposited coal, made mound with trench and pits as per instructions

In June 1983, the DNR Bureau of Engineering contacted the Yellow Medicine County Offices of the Recorder and Highway Engineer for corner information.

The following information was obtained from the Recorder's Office:

Surveyor's Book B, introductory page, Pages 37, 39 and 183 contain a survey by John Norgaard, County Surveyor, in 1901. Survey shows that a post was found at corner:

2637 feet from the northeast corner of Section 24

2635 feet from the southeast corner of Section 24

Surveyor's Plat Book, on Page 190 contains a survey by John Norgaard, County Surveyor, in 1905. Survey shows corner as a stake in the government mound.

Surveyor's Plat Book, on Page 376 contains a survey by John Norgaard, County Surveyor, in 1916. Survey shows that the government mound was found at corner. The corner is shown:

2637 feet from the northeast corner of Section 24

2635 feet from the southeast corner of Section 24

The following information was obtained from the DNR Bureau of Engineering's Records:

In 1969, corner was established in line with fences east and west and on a line from the northeast corner of Section 24 to the southeast corner of Section 24. A railroad spike was set to mark this location.

The corner is shown:

2638.50 feet from the northeast corner of Section 24

2625.91 feet from the southeast corner of Section 24

In 1973, the railroad spike that was set in 1969 was found at corner, 2626.04 feet from the southeast corner of Section 24.

On June 30, 1983, the DNR Bureau of Engineering traversed to the area of the corner and found the railroad spike set in 1969.

On June 30, 1983, the DNR Bureau of Engineering hired a backhoe operated by Larry Giese, of Porter to dig for evidence of this corner. A 6" by 11" by 14" field stone with pieces of a 1" by 4" wooden board beside it were found down 17 inches. The field stone was found to be:

2.14 feet north and 1.05 feet east of the railroad spike

2640.38 feet from the northeast corner of Section 24

2630.06 feet from the southeast corner of Section 24

1.28 feet east of a line between adjoining section corners

Accept the field stone as the location of the corner.

A 1" inside diameter by 12" iron pipe was set on the west side of the stone flush with the top. The railroad spike was replaced with a nail.

Traverse information is available from the DNR Bureau of Engineering.

287hab/missul