

CERTIFICATE OF LOCATION OF GOVERNMENT CORNER

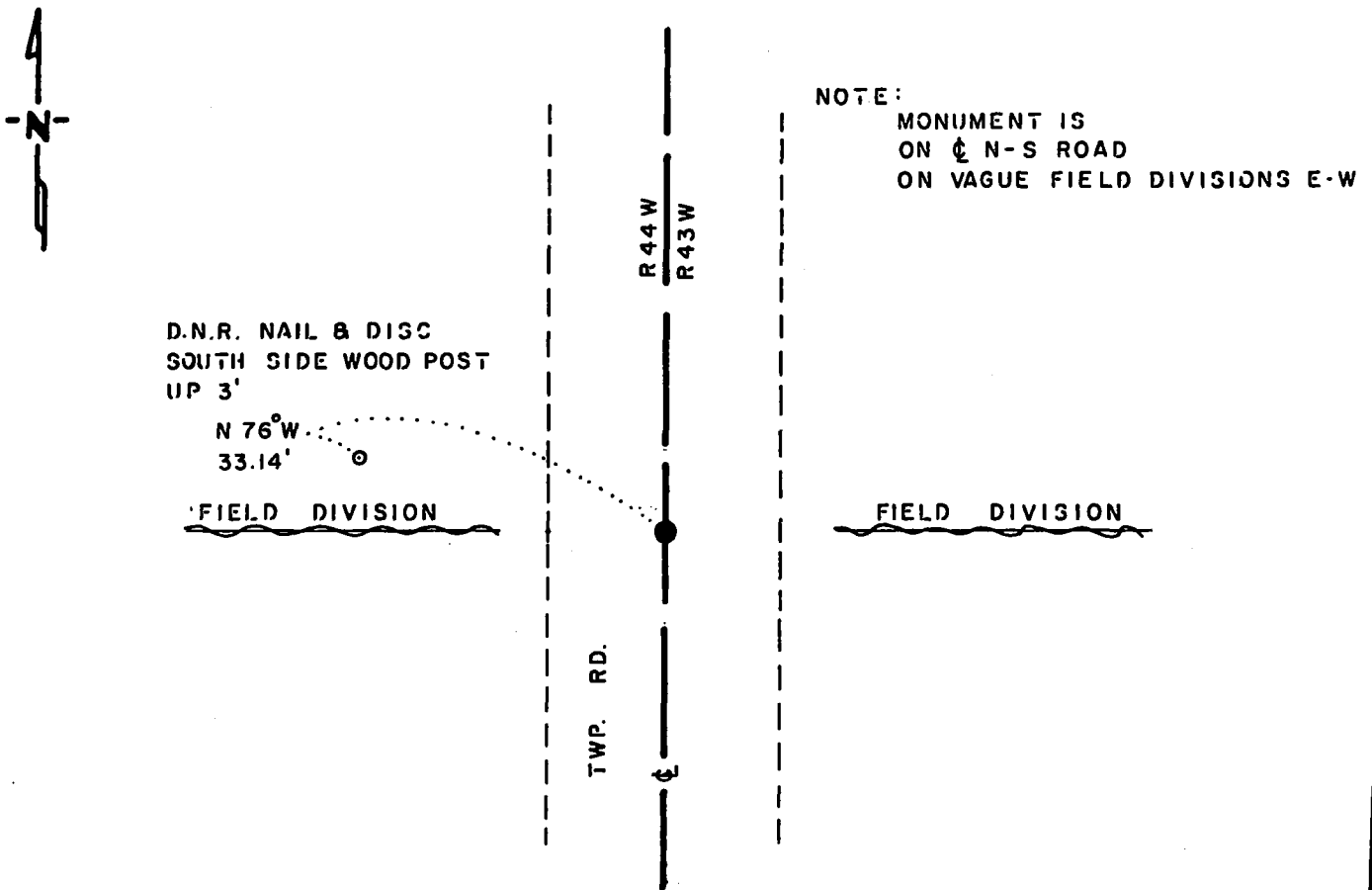
EAST QUARTER Corner of Section 25, Township 114 N., Range 44 W., 5th. P.M.
 STATE OF MINNESOTA, County of YELLOW MEDICINE

At the corner location shown on the sketch:

- On _____ found a _____

 left monument as found, lowered monument, removed monument (explain)
- On 3-3-86 placed a 1 1/4" x 1 1/4" x 20" PERFORATED STEEL TUBE WITH
ALUMINUM CAP STAMPED "D.N.R. SURVEY MARKER", DOWN 0.3'

SKETCH OF REFERENCE TIES



BEARING OBSERVED WITH COMPASS

Statement of evidence relative to this corner location is on back of page.

J.B.M. 4-14-86
 9-651

I hereby certify that this document and the data contained herein was prepared by me or under my direct supervision.

Bruce W. Shupard 4-28-86
 SIGNATURE DATE

Registration No. 17003

- Land Surveyor, Professional Engineer
- County Surveyor, County Engineer

OFFICE OF THE COUNTY RECORDER
 County of Yellow Medicine

I hereby certify that this document was filed in the Co. Recorders office at 9:55 A.M. on the 1 day of May A.D., 1986

County Recorder Norman J. Opdahl

By Kay Nordahl, Deputy

DOCUMENT NO. 188281

RECORDED
 GRANTED
 INDEXED

East Quarter Corner Section 25, Township 114 North, Range 44 West

This corner was originally established by the U. S. General Land Office survey in 1858. The government notes show:
set post, deposited coal, made mound with trench and pits as per instructions

This corner was reestablished by the U. S. General Land Office survey in 1867. Survey shows that corner was set:
40 chains (2640 feet) from the northeast corner of Section 25
120 chains (7920 feet) from the southeast corner of Section 36
A boulder in a mound with pits were set to mark corner.

In June 1983, the DNR Bureau of Engineering contacted the Yellow Medicine County Offices of the Recorder and Highway Engineer for corner information.

The following information was obtained from the Recorder's Office:
Surveyor's Book B, introductory page, Page 37, 39, 177 and 183 contain a survey by John Norgaard, County Surveyor, in 1901. Survey shows that a post was found at corner 2635 feet from the northeast corner of Section 25.

On June 6, 1983, the DNR Bureau of Engineering traversed to the area of the corner and set a temporary point on the center line of a north-south road in line with field divisions east and west. Scanned the area with an electronic metal locator but no metal attraction was obtained.

On November 18, 1985, the DNR Bureau of Engineering hired a backhoe owned by Yackley Digging of Canby to dig for evidence of this corner. Dug a hole 12 feet north-south by 12 feet east-west by 24 inches deep the center being 2 feet west of the temporary point. Natural ground was encountered down 12 inches. No monument was found. The temporary point was found to be:
2640.06 feet from the northeast corner of Section 25

Accept the temporary point as the location of the corner.

Traverse information is available from the DNR Bureau of Engineering.

289hab/missul