

CERTIFICATE OF LOCATION OF GOVERNMENT CORNER

NORTH QUARTER Corner of Section 25, Township 114 N., Range 44 W., 5th. P.M.

STATE OF MINNESOTA, County of YELLOW MEDICINE

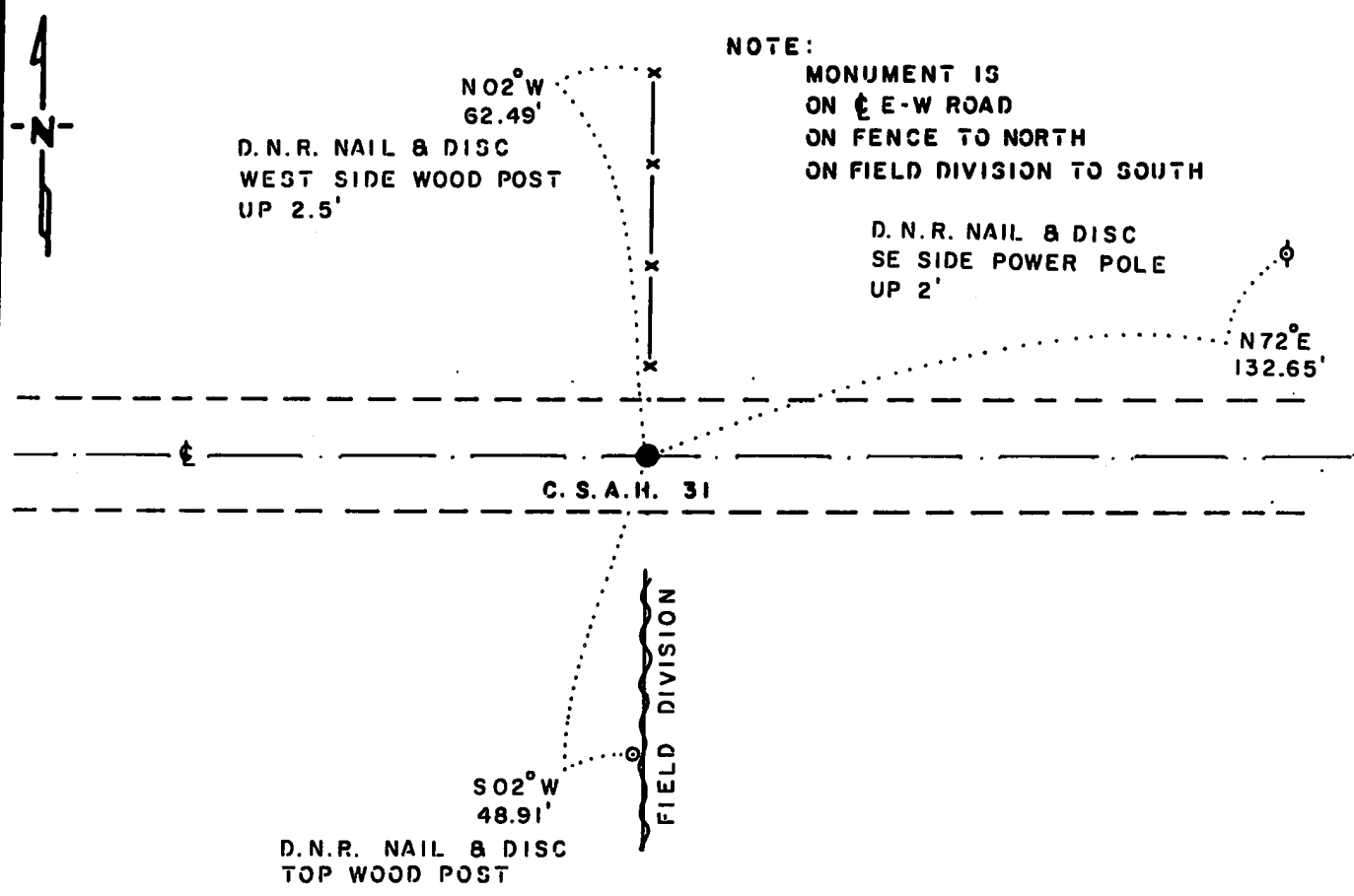
At the corner location shown on the sketch:

On 6-29-83 found a 3/8" x 24" IRON ROD, DOWN 0.2'
DATE

left monument as found, lowered monument, removed monument (explain)

On 3-3-86 placed a 1 1/4" x 1 1/4" x 20" PERFORATED STEEL TUBE WITH
DATE
ALUMINUM CAP STAMPED "D.N.R. SURVEY MARKER", DOWN 0.4'

SKETCH OF REFERENCE TIES



BEARINGS OBSERVED WITH COMPASS

Statement of evidence relative to this corner location is on back of page.

J. B. M. 4-14-86
9-851

I hereby certify that this document and the data contained herein was prepared by me or under my direct supervision.

Bruce W. Sheppard 4-28-86
SIGNATURE DATE

Registration No. 17003

Land Surveyor, Professional Engineer

County Surveyor, County Engineer

OFFICE OF THE COUNTY RECORDER
County of Yellow Medicine

I hereby certify that this document was filed in the Co. Recorders office at 10:00 A.M. on the 1 day of May A.D., 19 86

County Recorder Norman J. Opdahl

By Kay Nordahl, Deputy

DOCUMENT NO. 188282

RECORDED
INDEXED
FILED

North Quarter Corner Section 25, Township 114 North, Range 44 West

This corner was originally established by the U. S. General Land Office survey in 1871. The government notes show:

set post and raised mound as per instructions

In June 1983, the DNR Bureau of Engineering contacted the Yellow Medicine County Offices of the Recorder and Highway Engineer for corner information.

The following information was obtained from the Recorder's Office:

Surveyor's Plat Book, on Page 376 contains a survey by John Norgaard, County Surveyor, in 1916. Survey shows that government mound was found at corner:

2612 feet from the northeast corner of Section 25

2638 feet from the northeast corner of Section 26

The following information was obtained from the DNR Bureau of Engineering's Records:

In 1973, corner was established on the center line of an east-west road, in line with a fence north, and on a line from the northeast corner of Section 25 to the northeast corner of Section 26. A 3/8" by 24" iron rod was set to mark this location. The following ties are shown to corner:

notch, top east end corrugated metal culvert, north-northwest, 40.87 feet

notch, top west end corrugated metal culvert, northwest, 53.36 feet

2616.50 feet from the northeast corner of Section 25

2641.24 feet from the northeast corner of Section 26

On June 30, 1983, the DNR Bureau of Engineering traversed to the area of the corner and found a 3/8" by 24" iron rod on the center line of an east-west road, in line with a fence north and in line with a vague field division south.

On June 29, 1983, the DNR Bureau of Engineering hired a backhoe operated by Larry Giese, of Porter to dig for evidence of this corner. Dug a hole 10 feet north-south by 12 feet east-west by 36 inches deep the center being on the center line of east-west road and fence north. Natural ground was encountered down 27 inches. No other monument was found. The iron rod was found to be:

2616.62 feet from the northeast corner of Section 25

2640.74 feet from the northeast corner of Section 26

on line between adjoining section corners

Accept the iron rod as the location of the corner.

Traverse information is available from the DNR Bureau of Engineering.

279hab/missul