

CERTIFICATE OF LOCATION OF GOVERNMENT CORNER

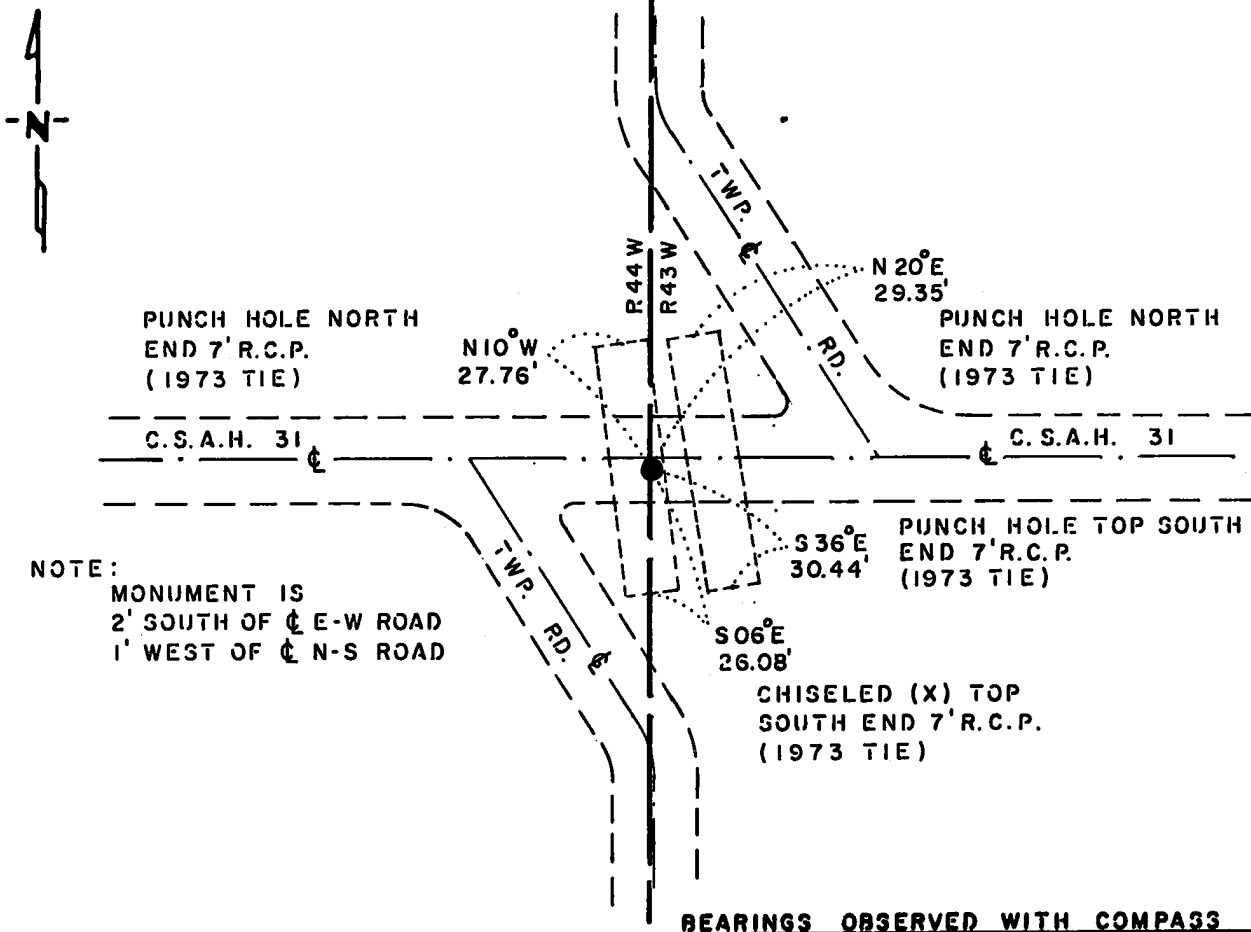
NORTHEAST Corner of Section 25, Township 114 N., Range 44 W., 5th. P.M.

STATE OF MINNESOTA, County of YELLOW MEDICINE

At the corner location shown on the sketch:

- On 7-5-83 found a 3/8" x 25" IRON ROD, DOWN 0.1'
DATE
- left monument as found, lowered monument, removed monument (explain)
- On 3-3-86 placed a 1 1/4" x 1 1/4" x 20" PERFORATED STEEL TUBE WITH
DATE
ALUMINUM CAP STAMPED "D.N.R. SURVEY MARKER", DOWN 0.2'

SKETCH OF REFERENCE TIES



NOTE:
MONUMENT IS
2' SOUTH OF ϕ E-W ROAD
1' WEST OF ϕ N-S ROAD

Statement of evidence relative to this corner location is on back of page.

J. B. M. 4-14-86
G-651

I hereby certify that this document and the data contained herein was prepared by me or under my direct supervision.

Bruce W. Shippert 4-28-86
SIGNATURE DATE

Registration No. 17003

- Land Surveyor, Professional Engineer
- County Surveyor, County Engineer

OFFICE OF THE COUNTY RECORDER
County of Yellow Medicine

I hereby certify that this document was filed in the Co. Recorders office at 10:05 A.M. on the 1 day of May A.D., 19 86

County Recorder Norman J. Opdahl

By Kay Nordahl, Deputy

DOCUMENT NO. 188283

RECORDED
GRANTOR ✓
GRANTEE ✓
INDEXED

Northeast Corner Section 25, Township 114 North, Range 44 West

This corner was originally established by the U. S. General Land Office survey in 1858. The government notes show:

set post, deposited coal, made mound with trench and pits as per instructions

In 1867, the U. S. General Land Office survey found a mound 4 inches high, pits 2 inches deep and a slight appearance of a trench at corner. The corner is shown:

160 chains (10560 feet) from the southeast corner of Section 36

In June 1983, the DNR Bureau of Engineering contacted the Yellow Medicine County Offices of the Recorder and Highway Engineer for corner information.

The following information was obtained from the Recorder's Office:

Surveyor's Book B, introductory page, Pages 37, 39, 177 and 183 contain a survey by John Norgaard, County Surveyor, in 1901. Survey shows that a 6" by 6" by 24" jasper granite was set at corner 3 inches above the ground, on line and equal distance between the east quarter corner of Section 24 and the east quarter corner of Section 25. A distance of 2635 feet is shown to the quarter corner.

Surveyor's Plat Book, on Page 376 contains a survey by John Norgaard, County Surveyor, in 1916. Survey shows corner but does not indicate what was found or set. The corner is shown:

2635 feet from the east quarter corner of Section 24

2612 from the north quarter corner of Section 25

The following information was obtained from the DNR Bureau of Engineering's Records:

In 1969, corner was assumed at the intersection of the center lines of roads north, south, east and west. A railroad spike was set to mark this location and the following ties were taken:

nail and bottle cap northwest side telephone pole, southwest, 50.55 feet

nail and bottle cap southwest side power pole, northwest, 59.32 feet

nail and bottle cap top west end north headwall of box culvert, north-northwest, 14.89 feet

nail and bottle cap top west end south headwall of box culvert, south-southwest, 13.88 feet

In 1973, the railroad spike that was set in 1969 was found at the corner. The railroad spike was replaced with a 24 inch long iron rod and the following ties were taken:

"X" top center concrete culvert, northeast, 26.50 feet

"X" top center concrete culvert, southeast, 30.55 feet

"X" top center concrete culvert, southwest, 26.00 feet

hole top center concrete culvert, northwest, 27.75 feet

On June 29, 1983, the DNR Bureau of Engineering traversed to the area of the corner and found a 3/8 inch by 25 inch iron rod flush with the road surface, 2 feet south of the center line of an east-west road and 1 foot west of the center line of a north-south road. The iron rod was removed and a hole 12 inches in diameter was dug to a depth of 26 inches where a large concrete culvert was encountered. No other monument was found. Searched for and found record ties as shown on sketch of ties. The iron rod was found to be:

2630.06 feet from the east quarter corner of Section 24

2640.06 feet from the east quarter corner of Section 25

2616.62 feet from the north quarter corner of Section 25

2579.52 feet from the north quarter corner of Section 30

4.93 feet north and 15.20 feet west of the computed lost position

Did not dig for a monument at the lost position because large reinforced concrete pipes have been installed under road.

Accept the iron rod as the location of the corner.

Traverse information is available from the DNR Bureau of Engineering.

28#hab/miasul