

CERTIFICATE OF LOCATION OF GOVERNMENT CORNER

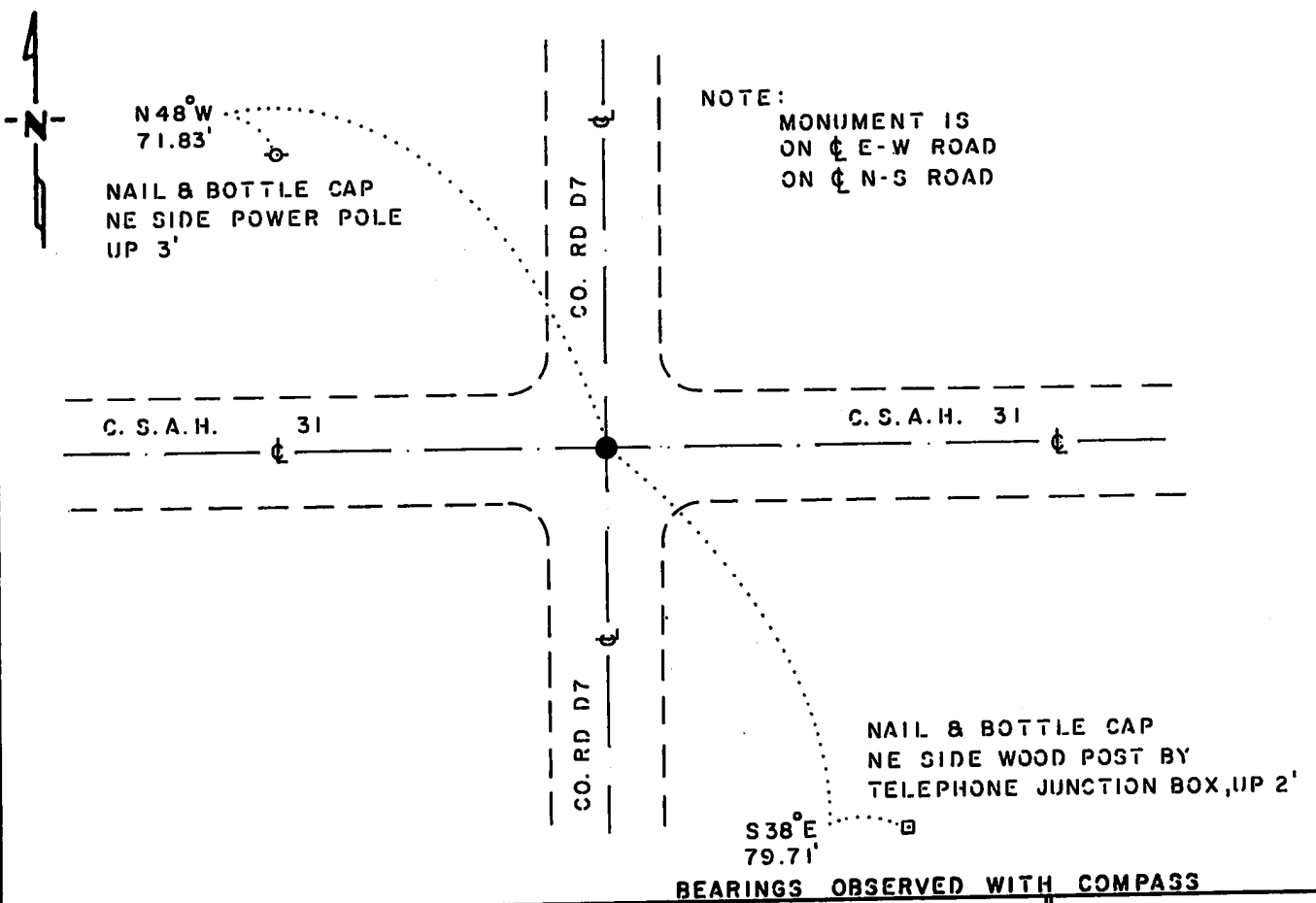
NORTHEAST Corner of Section 26, Township 114 N., Range 44 W., 5 th. P.M.

STATE OF MINNESOTA, County of YELLOW MEDICINE

At the corner location shown on the sketch:

- On 6-30-83 found a 1"x30" IRON ROD OVER A 6"x6" CUT GRANITE
DATE
STONE, DOWN 46"
 - left monument as found, lowered monument, removed monument (explain)
- On 6-30-83 placed a 1 1/4"x1 1/4"x20" PERFORATED STEEL TUBE WITH
DATE
ALUMINUM CAP STAMPED "D.N.R. SURVEY MARKER, OVER STONE, DOWN 0.4'

SKETCH OF REFERENCE TIES



Statement of evidence relative to this corner location is on back of page.

J. B. M. 1-28-86
9-651

I hereby certify that this document and the data contained herein was prepared by me or under my direct supervision.

Bruce W. Shepard 4-28-86
SIGNATURE DATE

Registration No. 17003

- Land Surveyor, Professional Engineer
- County Surveyor, County Engineer

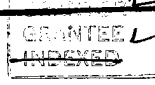
OFFICE OF THE COUNTY RECORDER
County of Yellow Medicine

I hereby certify that this document was filed in the Co. Recorders office at 10:10 AM. on the 1 day of May A.D., 19 86

County Recorder Norman J. Opdahl

By Kay Nordahl, Deputy

DOCUMENT NO. 188284



Northeast Corner Section 26, Township 114 North, Range 44 West

This corner was originally established by the U. S. General Land Office survey in 1871. The government notes show:

set post and raised mound as per instructions and for witness drove charred stake as usual

In June 1983, the DNR Bureau of Engineering contacted the Yellow Medicine County Offices of the Recorder and Highway Engineer for corner information.

The following information was obtained from the Recorder's Office:

Surveyor's Book B, introductory page, and Page 189 contain a survey by John Norgaard, County Surveyor, in 1901. Survey states "found stone and stake in the government mound, set top of a 6" by 6" by 24" jasper granite level with ground."

Surveyor's Plat Book, on Page 376 contains a survey by John Norgaard, County Surveyor, in 1916. Survey shows corner but does not indicate what was found or set. The corner is shown:

2638 feet from the north quarter corner of Section 25

The following information was obtained from the Highway Engineer's Office: Section Corner Book, date not indicated, shows corner but does not state what was found or set. The following ties are shown to corner:

fence post, west-southwest, 62.9 feet
fence post, west-southwest, 86.4 feet
fence post, east-northeast, 70.2 feet

fifth fence post, south-southwest, 92.3 feet
fourth fence post, north-northwest, 78.7 feet
third fence post, northeast, 81.1 feet
third fence post, northeast, 82.1 feet
second fence post, southeast, 108.2 feet
telephone pole, northwest, 116.6 feet

The following information was obtained from the DNR Bureau of Engineering's Records:

In 1973, corner was assumed at the intersection of the center lines of roads north, south, east and west. A 3/8 inch by 24 inch iron rod was set to mark this location.

On June 30, 1983, the DNR Bureau of Engineering traversed to the area of the corner and found a 1 inch by 30 inch iron rod at the intersection of the center lines of roads north, south, east and west.

On June 30, 1983, the DNR Bureau of Engineering hired a backhoe operated by Larry Giese, of Porter to dig for evidence of this corner. A 6" by 6" cut granite stone was found down 46 inches at natural ground under iron rod. A 1/2 inch inside diameter by 20 inch iron pipe was set on the west side of stone, flush with the top and the iron rod was discarded. The granite stone was found to be:

2640.74 feet from the north quarter corner of Section 25

Accept the granite stone as the location of the corner.

Traverse information is available from the DNR Bureau of Engineering.