

CERTIFICATE OF LOCATION OF GOVERNMENT CORNER

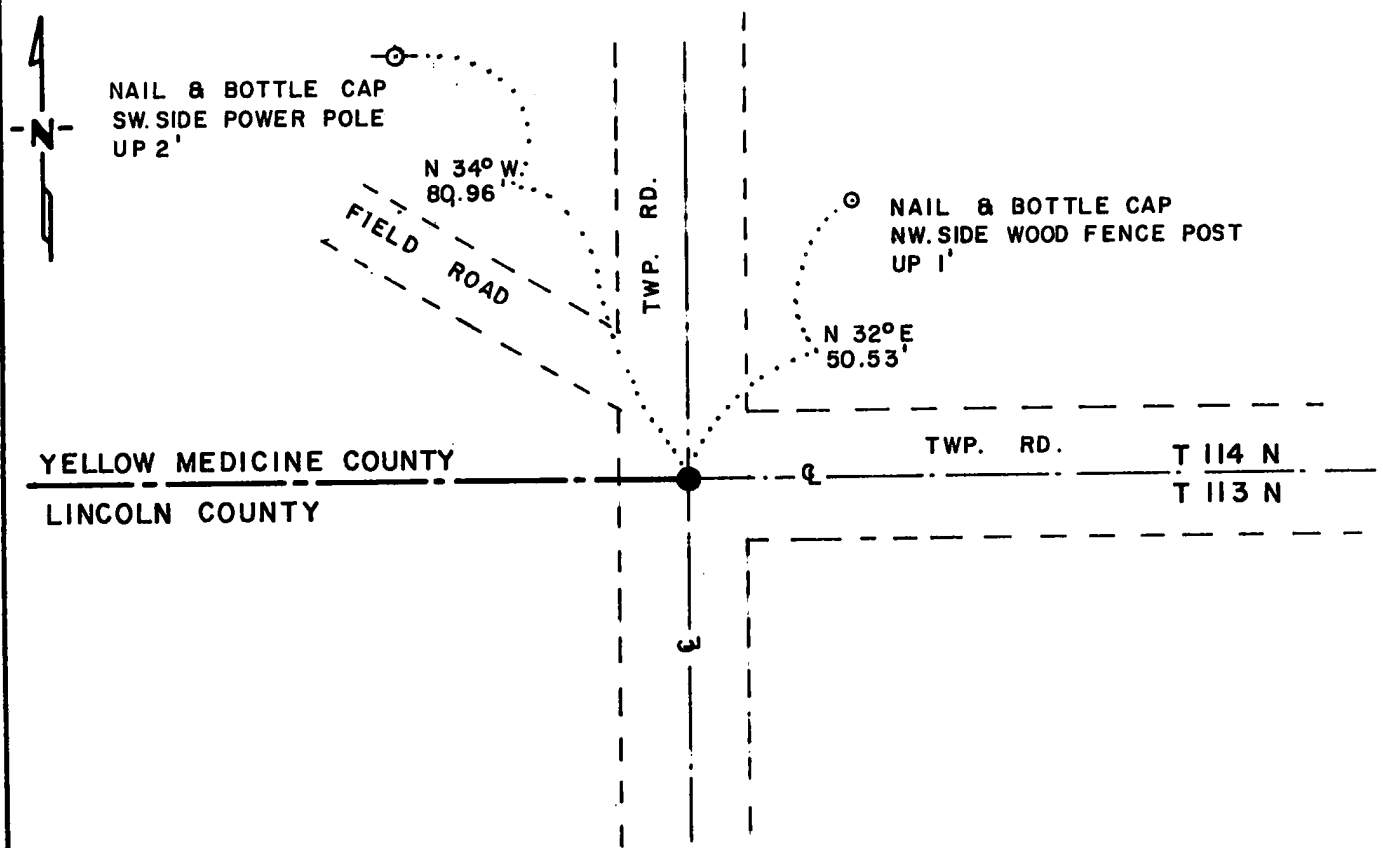
SOUTHEAST Corner of Section 32, Township 114 N., Range 45 W., 5th P.M.

STATE OF MINNESOTA, County of YELLOW MEDICINE

At the corner location shown on the sketch:

- On 6-30-77 found a 8"x 8"x 10" STONE WITH 1"x 2" WOOD HUB ON NORTH
DATE SIDE, DOWN 29"
 left monument as found, lowered monument, removed monument (explain)
- On 6-30-77 placed a 1/2"x 12" IRON PIPE OVER STONE, DOWN 0.3'
DATE

SKETCH OF REFERENCE TIES



TIES TAKEN 4-2-86
BEARINGS OBSERVED WITH COMPASS

Statement of evidence relative to this corner location is on back of page.

LRP 4-10-86
G-760

I hereby certify that this document and the data contained herein was prepared by me or under my direct supervision.

Lowell R. Pommeroy Jr. 4-21-86
SIGNATURE DATE

Registration No. 17005

- Land Surveyor, Professional Engineer
- County Surveyor, County Engineer

OFFICE OF THE COUNTY RECORDER

County of Yellow Medicine

I hereby certify that this document was filed in the Co. Recorders office at 10:15 A.M. on the 1 day of May A.D., 19 86

County Recorder Norman J. Opdahl

By Kay Nordahl Deputy

DOCUMENT NO. 188285

RECORDED
GRANTOR
GRANTEE
INDEXED

Southeast Corner Section 32, Township 114 North, Range 45 West

This corner was originally established by the U. S. General Land Office survey in 1858. The government notes show corner marked with a wood post set in mound of earth with pits and trench dug around the mound.

In October 1985, the DNR Bureau of Engineering contacted the following for corner information:

Lincoln County Offices of the Recorder and Highway Engineer
Yellow Medicine County Offices of the Recorder and Highway Engineer

The following information was obtained from the Yellow Medicine County Recorder's Office:

Surveyor's Record Book B, on Page 192, contains a collection of what was found at government corners by John Norgaard, County Surveyor, dated September 27, 1901. Norgaard states, "Found stone and stake in the government mound. A 6" by 6" by 24" jasper granite stone was set 2" above ground at this location.

Surveyor's Record Book, on Page 522, contains a survey by John Norgaard, County Surveyor, dated 1929. Corner is a monument 0.2 ft. above ground.

The following information was obtained from the Lincoln County Recorder's Office:

Surveyors Record Book 5, on Page 22, contains a survey by A. L. Kotowski, County Surveyor, dated July 16, 1929. Survey shows a stone at this corner.

Surveyor's Record Book 5, on Page 42, contains a survey by Floyd Muchlinski, County Surveyor, dated June 5, 1941. Survey states corner was found.

The following information was obtained from the Lincoln County Highway Engineer's Office:

A tie book of government corners, date not indicated, shows a stone marker in place at the corner.

On June 30, 1977, the DNR Bureau of Engineering hired a backhoe operated by Pat Sterzinger of Ivanhoe to dig for evidence of this corner. Found an 8" by 8" by 10" stone with a 1" by 2" wood hub on its north side down 29". Probed around and under this stone, but found nothing.

Accept the found stone as the location of the corner.

On April 2, 1986, revisited the corner area and found the iron pipe, as previously set, in good condition and took ties as shown.

Traverse information is available from the DNR Bureau of Engineering.

157hab/missu2