

# CERTIFICATE OF LOCATION OF GOVERNMENT CORNER

Northwest Corner of Section 7, Township 116 N., Range 41 W., 5th P.M.  
STATE OF MINNESOTA, County of Yellow Medicine

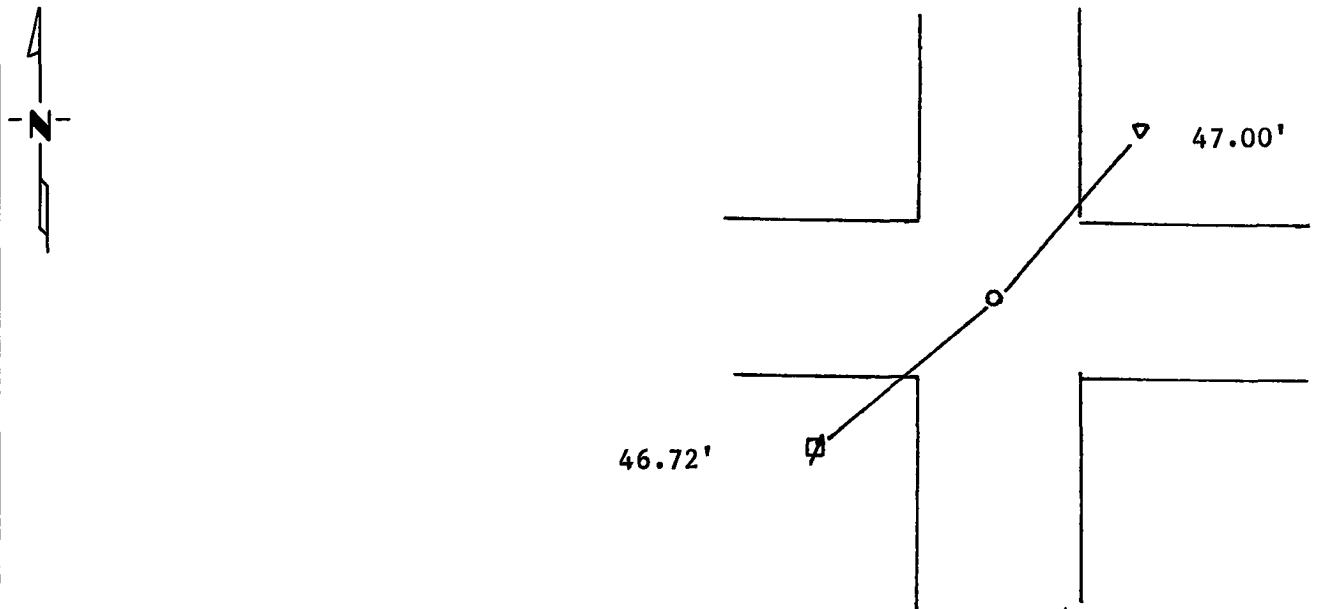
At the corner location shown on the sketch:

On Aug. 27, 86 found a nothing  
DATE

left monument as found,  lowered monument,  removed monument (explain)

On Aug. 27, 1986 placed a 5/8 inch rerod with seal (See Back)  
DATE

### SKETCH OF REFERENCE TIES



Northeast 47.00 feet PK nail in buried cable marker post

Southeast 46.72 feet PK nail in power pole

Statement of evidence relative to this corner location is on back of page.

I hereby certify that this document and the data contained herein was prepared by me or under my direct supervision.

Lyle E. Maseng 30 Aug 1986  
SIGNATURE DATE

Registration No. 11943

Land Surveyor,  Professional Engineer

County Surveyor,  County Engineer

### OFFICE OF THE COUNTY RECORDER

County of Yellow Medicine

I hereby certify that this document was filed in the Co. Recorders office at 11:00 AM. on the 2 day of September A.D., 19 86

County Recorder Norman J. Opdahl

By Kay Nordahl, Deputy

DOCUMENT NO. 189056

RECORDED  
GRANTED  
GRANTED  
INDEXED

Statement of Evidence:

In 1913 John Norgaard found and used the corner and set a Jasper Stone on original corner.

On Aug. 27, 1986 I dug for the stone I found natural ground was only 8 inches below the road surface we dug another 3 feet to clay and found nothing. I set the rerod in the center of the road intersection and measured the distance recorded in 1913 by John Norgaard from the Northeast corner of said section 7, I had the same distance of 4,987 feet.