

CERTIFICATE OF LOCATION OF GOVERNMENT CORNER

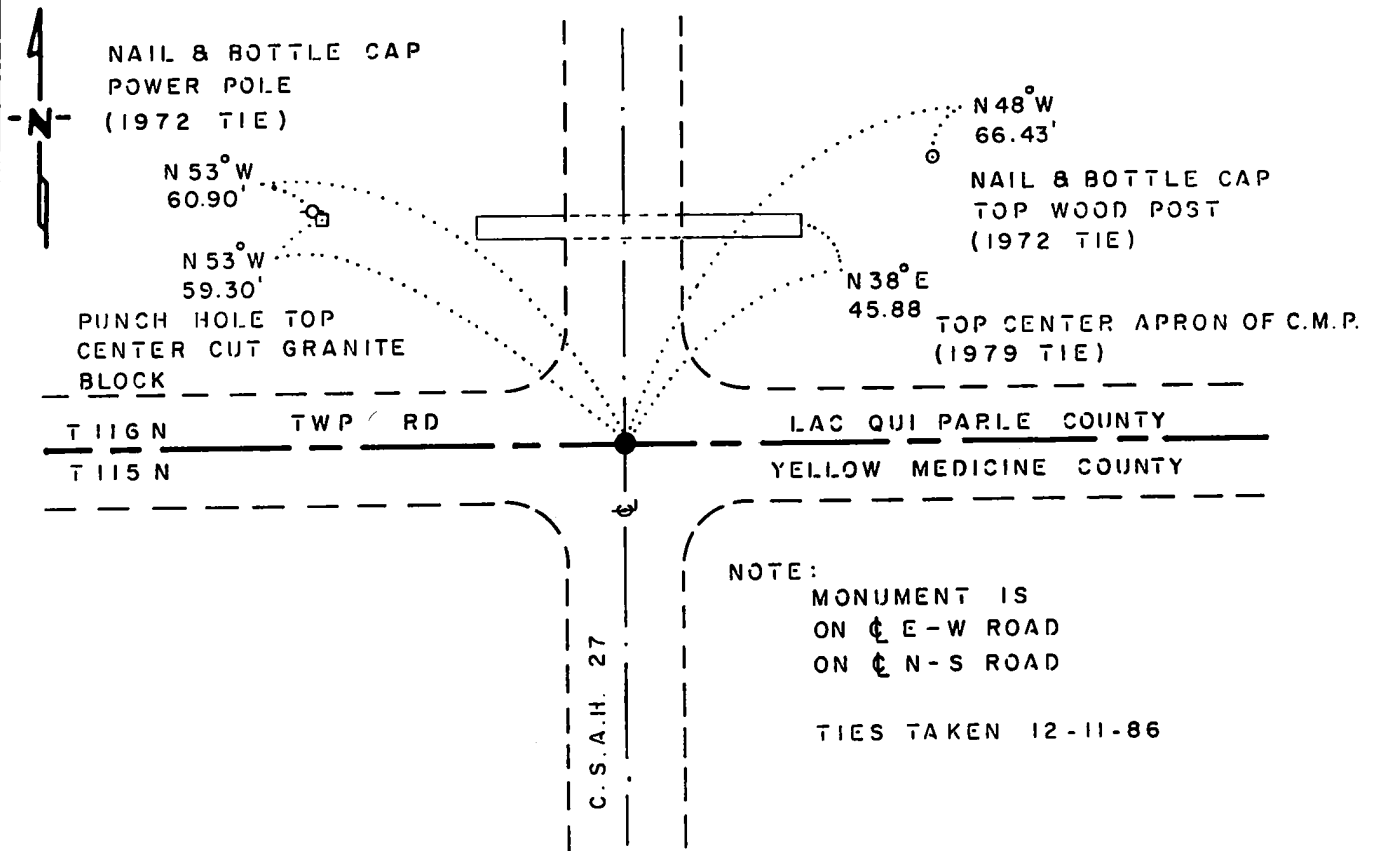
NORTHEAST Corner of Section 2, Township 115 N., Range 43 W., 5th P.M.

STATE OF MINNESOTA, County of YELLOW MEDICINE

At the corner location shown on the sketch:

- On 3-24-81 found a CAST IRON MONUMENT, DOWN 0.4', OVER A WOOD HUB, DOWN 16", OVER A 8" x 8" CUT GRANITE BLOCK, DOWN 28"
DATE
 left monument as found, lowered monument, removed monument (explain)
- On _____ placed a _____
DATE

SKETCH OF REFERENCE TIES



BEARINGS OBSERVED WITH COMPASS

Statement of evidence relative to this corner location is on back of page.

J. B. M. 3-3-87
G-879

RECORDED
GRANTED
GRANTEE
INDEXED

I hereby certify that this document and the data contained herein was prepared by me or under my direct supervision.

Bruce W. Sheppard 3-18-87
SURVEYOR DATE

Registration No. 17003
 Land Surveyor, Professional Engineer
 County Surveyor, County Engineer

OFFICE OF THE COUNTY RECORDER
County of Yellow Medicine

I hereby certify that this document was filed in the Co. Recorders office at 10:05 A.M. on the 20 day of March A.D., 19 87

County Recorder Norman J. Opdahl
 By Kay Nordahl, Deputy
 DOCUMENT NO. 190305

This corner was originally established by the U.S. General Land Office survey in 1858. The government notes show corner marked with a wood post and deposited coal in a mound with trench and pits as per instructions.

In March 1981, the DNR Bureau of Engineering contacted the following for corner information:

Lac Qui Parle County Offices of the Recorder and Highway Engineer
Yellow Medicine County Offices of the Recorder and Highway Engineer

The following information was obtained from the Yellow Medicine County Recorder's Office:

Survey Book "R" contains a collection of what was found at government corners by John Norgaard, County Surveyor, dated September 27, 1901. Norgaard states, "Found stone and stake in government mound." A 6 inch by 6 inch by 2 feet Jasper granite was set level with the ground at this location.

The following information was obtained from the Lac Qui Parle County Recorder's Office:

Surveyor's Record Book 1 on Page 280 contains a 1904 survey by Berner Loftfield, County Surveyor. Survey states that a stone was found at corner per Yellow Medicine County Surveyor's information. The corner is shown:
38.04 chains (2510.64 feet) from the east quarter corner of Section 35
40.12 chains (2647.92 feet) from the north quarter corner of Section 1

The following information was obtained from the Yellow Medicine County Highway Engineer's Office:

A sheet containing ties to government corners circa 1940 shows corner but does not indicate what was found or set. The following ties are shown to corner:
telephone pole, northwest, 72.3 feet
telephone pole, northeast, 95.4 feet

The following information was obtained from the Lac Qui Parle County Recorder's Office:

A certificate of corner location signed by Lyle W. Pantzke, Highway Engineer, in 1941 shows that a stone was found at corner. An 8 inch by 8 inch by 24 inch quarried granite block was set in place of stone and the following ties were taken:
set - 8" x 8" x 24" quarried granite block, northwest, 50.0 feet
set - 8" x 8" x 24" quarried granite block, northeast, 50.0 feet

The following information was obtained from the Yellow Medicine County Highway Engineer's Office:

A page in a field notebook shows that on April 27, 1972, an iron monument was found at corner down 10 inches. The following ties are shown to corner:
at PI Station 319+28.5
top of steel fence post, west-southwest, 75.65 feet
cap in power pole, northwest, 60.85 feet
spike in road, west, 100.00 feet
cap in top of R/W post, northeast, 66.2 feet

The following information was obtained from the Lac Qui Parle County Recorder's Office:

A Certificate of Location of Government Corner signed by Marlyn D. Hanson in 1979 shows that a granite block was found at corner. A cast iron marker was set in place of granite block and the following ties were taken:

nail in corner fence post, southwest, 47.0 feet
granite block, northwest, 59.4 feet
top center of apron of CMP, northeast, 45.9 feet

On March 24, 1981, the DNR Bureau of Engineering traversed to the area of the corner and found a cast iron monument down 0.4 of a foot over a wood hub down 16 inches over an 8 inch by 8 inch granite block down 28 inches. Searched for and found record ties as shown on sketch of reference ties. Reset the monuments as found and found them to be:

at the intersection of roads
2511.27 feet from the east quarter corner of Section 35
2642.10 feet from the north quarter corner of Section 2

Accept the granite block as the location of the corner.

On December 11, 1986, revisited the corner and found the cast iron monument in good condition and took ties.

Traverse information is available from the DNR Bureau of Engineering.