

CERTIFICATE OF LOCATION OF GOVERNMENT CORNER

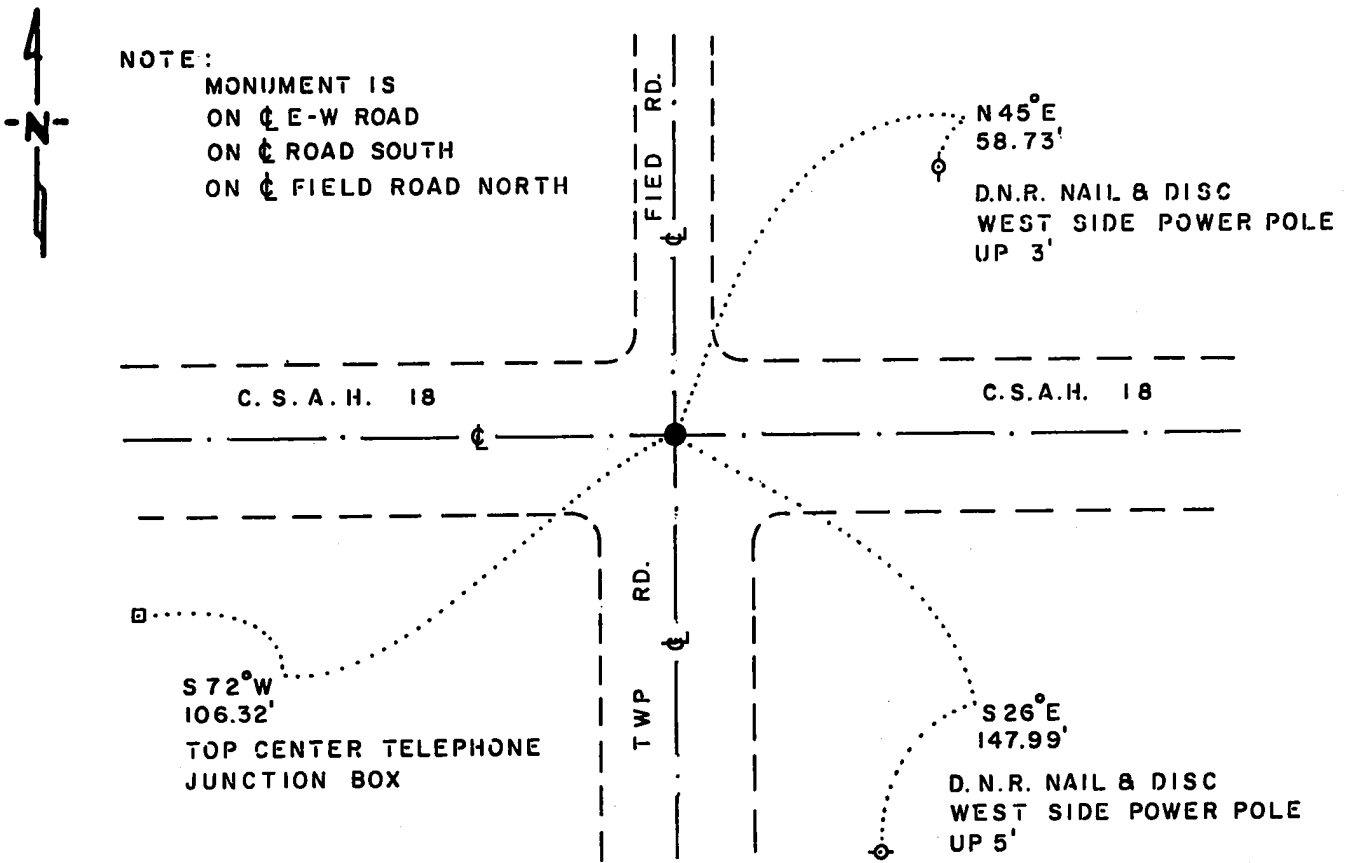
NORTHEAST Corner of Section 15, Township 114 N., Range 41 W., 5th. P.M.

STATE OF MINNESOTA, County of YELLOW MEDICINE

At the corner location shown on the sketch:

- On 7-21-87 found a 1/2" x 20" SQUARE IRON ROD, DOWN 18"
DATE
- left monument as found, lowered monument, removed monument (explain)
- On 7-21-87 placed a 1 1/4" x 1 1/4" x 20" PERFORATED STEEL TUBE WITH
DATE
ALUMINUM CAP STAMPED "D.N.R. SURVEY MARKER", FLUSH, OVER IRON ROD

SKETCH OF REFERENCE TIES



NOTE:

MONUMENT IS
ON \perp E-W ROAD
ON \perp ROAD SOUTH
ON \perp FIELD ROAD NORTH

BEARINGS OBSERVED WITH COMPASS

Statement of evidence relative to this corner location is on back of page.

J.R.M. 8-4-87
A-1105

RECORDED
GRANTED
GRANTEE
INDEXED

I hereby certify that this document and the data contained herein was prepared by me or under my direct supervision.

Lowell R. Pomeroy Jr. 8-20-87
SIGNATURE DATE

Registration No. 17005

- Land Surveyor, Professional Engineer
- County Surveyor, County Engineer

OFFICE OF THE COUNTY RECORDER

County of Yellow Medicine

I hereby certify that this document was filed in the Co. Recorders office at 9:50 AM. on the 24 day of August A.D., 19 87

County Recorder Norman J. Opdahl

By Kay Nordahl, Deputy

DOCUMENT NO. 191465

Northeast Corner Section 15, Township 114 North, Range 41 West

The DNR Bureau of Engineering contacted the following offices for corner information:

Secretary of State
Yellow Medicine County Recorder
Yellow Medicine County Highway Engineer

- 1867 U.S. General Land Office notes in the Secretary of State's Office describes this corner as a set post with charred stake, mound and pits.
- 1891 Surveyor's Record Book, on page 104, from the County Recorder's Office, contains a survey by Jonah Peterman, County Surveyor. Survey states this was a found government corner. A stone is shown at this location. Corner measures 40.50 chains (2673.00 ft.) from the east quarter corner of Section 15.
- 1901 Surveyor's Record Book B, on page 163, from the County Recorder's Office, contains a collection of what was found at government section corners by John Norgaard, County Surveyor, in a township re-monumentation survey. Norgaard states this corner was "located at equal proportional distances from the northeast corner Section 10, the meander corner on the north side of lake between Sections 22 and 23, the north $\frac{1}{4}$ post Section 14 and the northwest corner Section 15". A 6" by 6" by 24" jasper granite stone was set at this location 3" above ground. Page 33 of Surveyor's Record Book B is a township plat showing distances between government corners obtained from Norgaard's re-monumentation survey. This corner is shown:
5306 ft. from the northeast corner of Section 10
5306 ft. from the northeast corner of Section 22
7018 ft. from meander corner between Sections 22 and 23
5300 ft. from the northwest corner of Section 15
2659 ft. from the north quarter corner of Section 14
- 1927 Surveyor's Record Book, on Page 508, from the County Recorder's Office, contains a survey by John Norgaard, County Surveyor. Two ties are shown for this corner, but no mention of a monument is made. A distance of 5300 ft. is shown from this corner to the northwest corner Section 15.
- 1966 A tie page of field notes from the County Highway Engineer's Office shows six ties to this corner, but no mention of a monument is made.
- 1987 April 2, the DNR Bureau of Engineering found a nail and disc at the intersection of roads north-south and east-west. July 21, dug the corner by hand and found a $\frac{1}{2}$ " by 20" square iron rod down 18" under the nail and disc. Probed in all directions to depth of 40" but hit nothing else, no other metal attraction. Searched for, but found no evidence of record ties. Replaced square iron rod as found and measured:
5300.36 ft. to the northeast corner Section 10
5320.17 ft. to the northeast corner Section 22

Analysis of the available information led the DNR Bureau of Engineering to conclude that the found square iron rod marks the location of the corner. Due to the ties recorded by the County Highway Engineer, it is believed the corner was located, removed by road construction, and then reset.