

CERTIFICATE OF LOCATION OF GOVERNMENT CORNER

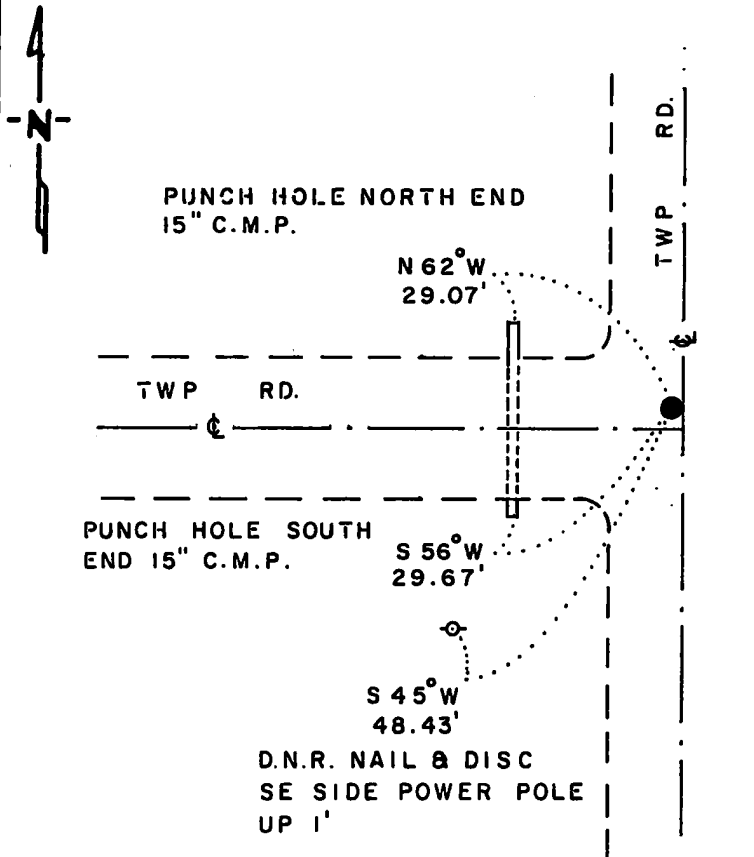
NORTHEAST Corner of Section 21, Township 114 N., Range 41 W., 5th P.M.

STATE OF MINNESOTA, County of YELLOW MEDICINE

At the corner location shown on the sketch:

- On 4-1-87 found a 1 1/2" x 1 1/2" x 27" ANGLE IRON, DOWN 0.5', OVER A
6" x 6" x 24" CUT GRANITE STONE, DOWN 30"
 left monument as found, lowered monument, removed monument (explain)
- On 4-1-87 placed a 1 1/4" x 1 1/4" x 20" PERFORATED STEEL TUBE WITH
ALUMINIUM CAP STAMPED "D.N.R. SURVEY MARKER", DOWN 0.6', OVER STONE

SKETCH OF REFERENCE TIES



NOTE:
 MONUMENT IS
 2' WEST OF \hat{c} N-S ROAD
 3' NORTH OF \hat{c} ROAD WEST

BEARINGS OBSERVED WITH COMPASS

Statement of evidence relative to this corner location is on back of page.

J.B.M. 8-4-87
A-1105

RECORDED
 GRANTED
 GRANTED
 INDEXED

I hereby certify that this document and the data contained herein was prepared by me or under my direct supervision.

Lowell R. Pomeroy 8-20-87
SIGNATURE DATE

Registration No. 17005

- Land Surveyor, Professional Engineer
- County Surveyor, County Engineer

OFFICE OF THE COUNTY RECORDER

County of Yellow Medicine

I hereby certify that this document was filed in the Co. Recorders office at 10:00 A.M. on the 24 day of August A.D., 19 87

County Recorder Norman J. Opdahl

By Kay Nordahl, Deputy

DOCUMENT NO. 191467

Northeast Corner Section 21, Township 114 North, Range 41 West

The DNR Bureau of Engineering contacted the following offices for corner information:

Secretary of State
Yellow Medicine County Recorder
Yellow Medicine County Highway Engineer

- 1867 U.S. General Land Office notes in the Secretary of State's Office describes this corner as a set post.
- 1884 Surveyor's Record Book, on Page 20, from the County Recorder's Office, contains a survey by Jonah Peterman, County Surveyor. Survey commences at this corner, but does not describe it.
- 1901 Surveyor's Record Book B, on page 163, from the County Recorder's Office, contains a collection of what was found at government section corners by John Norgaard, County Surveyor, in a township re-monumentation survey. Norgaard states this corner was "located with distance as I took 5 years ago when the government corner was plain 5302 feet north of the southeast corner Section 21 and 2 feet east of road where the government stake used to be". A 6" by 6" by 24" jasper granite stone was set at this location, top of monument level with ground.
- 1901 October 10, Surveyor's Record Book, on Page 171, from the County Recorder's Office, contains a survey of Section 21 by John Norgaard, County Surveyor. Norgaard states at all section corners found stone monument set by himself in re-survey. Corner is shown:
2650 ft. from the east quarter corner Section 21
5300 ft. from the southeast corner Section 21
- 1911 Surveyor's Record Book, on page 235, from the County Recorder's Office, contains a survey of Section 21 by John Norgaard, County Surveyor. Norgaard states, "at all section corners found the jasper stone monuments set by me at the re-survey of the county." Corner is shown:
2647.0 ft. from the east quarter corner of Section 21
5294.0 ft. from the southeast corner of Section 21
- 1928 An addition to the above mentioned page 235 of Surveyor's Record Book shows John Norgaard, County Surveyor, setting a granite boulder 20 ft. east of corner.
- 1935 August 6, on Page 309 of a book of field notes obtained from DNR Division of Waters, the following is stated:
Dug at the intersection of a north-south road and road west. Found a 6" by 6" by 24" stone monument down 4" in west car track of north-south road. Three ties were taken. On Page 234 of this field book a distance of 5299.85 ft. from this corner to the northeast corner of Section 28 is recorded.
- No Date A tie page of field notes, from the County Highway Engineer's Office, shows five ties to this corner, but no mention of a monument is made.
- 1987 March 31, the DNR Bureau of Engineering hired a backhoe operated by Peterson Excavating of Clarkfield to dig for evidence of this corner. Dug a 4 ft. east-west by 8 ft. north-south by 3 ft. deep hole, the center at the intersection of roads north-south and west. Found a 1½" by 1½" by 27" angle iron down 0.5 ft., 3 ft. west of centerline north-south road and 4.5 ft. north of centerline road west. Found a 6" by 6" by 24" cut granite stone with very old wood on its north and south side down 30" at natural ground. Stone is 2 ft. west of centerline north-south road and 3 ft. north of centerline road west. Placed the found angle on the north side of stone flush with its top. Checked for record ties but found nothing. Stone measures 5299.23 ft. from the northeast corner Section 28.

Analysis of the available information led the DNR Bureau of Engineering to conclude that the found 6" by 6" by 24" stone marks the location of the corner, per John Norgaard's re-survey.