

# CERTIFICATE OF LOCATION OF GOVERNMENT CORNER

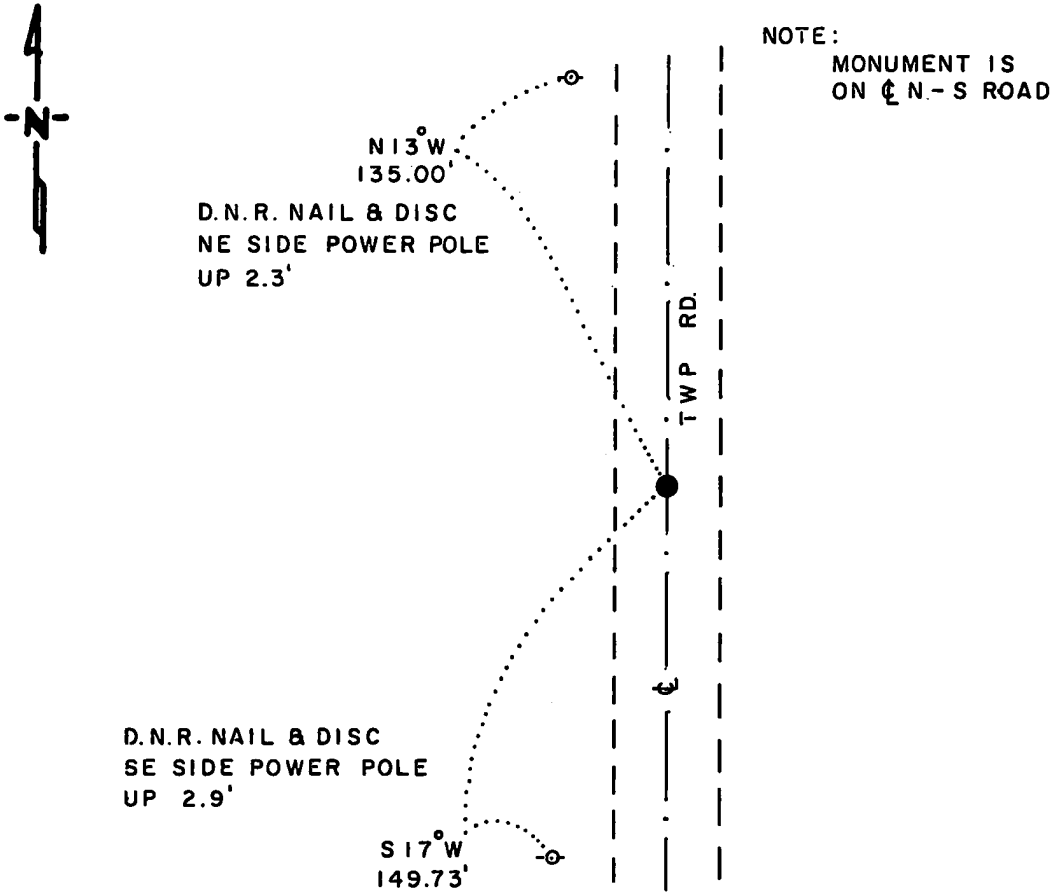
EAST QUARTER Corner of Section 21, Township 114 N., Range 41 W., 5th P.M.

STATE OF MINNESOTA, County of YELLOW MEDICINE

At the corner location shown on the sketch:

- On \_\_\_\_\_ found a \_\_\_\_\_  
DATE
- left monument as found,  lowered monument,  removed monument (explain)
- On 8-11-87 placed a 1 1/4" x 1 1/4" x 20" PERFORATED STEEL TUBE WITH  
DATE  
ALUMINIUM CAP STAMPED "D.N.R. SURVEY MARKER". DOWN 0.2'

### SKETCH OF REFERENCE TIES



BEARINGS OBSERVED WITH COMPASS

Statement of evidence relative to this corner location is on back of page.

J.B.M. 8-18-87  
A-1105

I hereby certify that this document and the data contained herein was prepared by me or under my direct supervision.

Howell R. Pomeroy Jr. 8-20-87

Registration No. 17005

- Land Surveyor,  Professional Engineer
- County Surveyor,  County Engineer

OFFICE OF THE COUNTY RECORDER  
County of Yellow Medicine

RECORDED  
GRANTOR ✓  
GRANTEE ✓  
INDEXED ✓

I hereby certify that this document was filed in the Co. Recorders office at 10:05 A.M. on the 24 day of August A.D., 19 87

County Recorder Norman J. Opdahl

By Kay Nordahl, Deputy

DOCUMENT NO. 191468

East Quarter Corner Section 21, Township 114 North, Range 41 West

The DNR Bureau of Engineering contacted the following offices for corner information:

Secretary of State  
Yellow Medicine County Recorder  
Yellow Medicine County Highway Engineer

- 1867 U.S. General Land Office notes in the Secretary of State's Office describes this corner as a set post with charred stake, mound and pits.
- 1901 Surveyor's Record Book B, on page 33, from the County Recorder's Office, contains a township plat showing distances between government corners obtained from a re-monumentation survey by John Norgaard, County Surveyor. No mention of this corner is made, but a distance of 5302 ft. is shown between adjoining section corners.
- 1901 October 10, Surveyor's Record Book, on Page 171, from the County Recorder's Office, contains a survey by John Norgaard, County Surveyor. Norgaard states, "East  $\frac{1}{4}$  post - nothing left." Corner is shown 2650 ft. from adjoining section corners.
- 1911 Surveyor's Record Book, on page 235, from the County Recorder's Office, contains a survey of Section 21 by John Norgaard, County Surveyor. Norgaard states, "East  $\frac{1}{4}$  post - located on line and at equal distance between section corners. Left only a small hub." Corner is shown 2647 ft. from adjoining section corners.
- 1987 March 31, the DNR Bureau of Engineering hired a backhoe operated by Peterson Excavating of Clarkfield to dig for evidence of this corner. Dug an 8 ft. east-west by 12 ft. north-south hole, the center being midway between adjoining section corners. Encountered natural ground down 52", dug down to 65" but found nothing. Scanned a 50 ft. north-south area around center of hole with an electronic metal locator, but found nothing, no east-west occupation.

The DNR Bureau of Engineering considers this corner to be lost and re-established it using lost methods. Lost position was found to measure 2649.62 ft. from adjoining section corners.